



सत्यमेव जयते

भारत सरकार  
Government of India  
विद्युत मंत्रालय  
Ministry of Power  
केन्द्रीय विद्युत प्राधिकरण  
Central Electricity Authority



May-2024/ मई -2024

नवीकरणीय परियोजना प्रबोधन प्रभाग  
Renewable Project Monitoring Division

## वितरण सूची/Distribution List

1. सचिव, विद्युत मंत्रालय, श्रम शक्ति भवन, रफी मार्ग, नई दिल्ली- 110001  
Secretary, Ministry of Power, Shram Shakti Bhawan, Rafi Marg, New Delhi-01
2. सचिव, नवीन और नवीकरणीय ऊर्जा मंत्रालय, ब्लॉक -14, अटल अक्षय ऊर्जा भवन, सीजीओ कॉम्प्लेक्स, लोधी रोड, नई दिल्ली -03  
Secretary, Ministry of New and Renewable Energy, Atal Akshay Urja Bhawan, CGO Complex, Lodhi Road, New Delhi-03
3. अध्यक्ष, के.वि.प्रा. सेवा भवन, आर. के. पुरम, नई दिल्ली-110066  
Chairperson, CEA, Sewa Bhawan, R. K. Puram, New Delhi-110066
4. सदस्य (योजना), के.वि.प्रा. सेवा भवन, आर. के. पुरम, नई दिल्ली-110066  
Member (Planning), CEA, Sewa Bhawan, R. K. Puram, New Delhi-110066
5. सदस्य (ई & सी), के.वि.प्रा. सेवा भवन, आर. के. पुरम, नई दिल्ली-110066  
Member (E&C), CEA, Sewa Bhawan, R. K. Puram, New Delhi-110066
6. सदस्य (जी.ओ.डी.), के.वि.प्रा. सेवा भवन, आर. के. पुरम, नई दिल्ली-110066  
Member (GO&D), CEA, Sewa Bhawan, R. K. Puram, New Delhi-110066
7. सदस्य (ताप-विद्युत), के.वि.प्रा. सेवा भवन, आर. के. पुरम, नई दिल्ली-110066  
Member (Thermal), CEA, Sewa Bhawan, R. K. Puram, New Delhi-110066
8. सदस्य (जल-विद्युत), के.वि.प्रा. सेवा भवन, आर. के. पुरम, नई दिल्ली-110066  
Member (Hydro), CEA, Sewa Bhawan, R. K. Puram, New Delhi-110066
9. सदस्य (विद्युत् प्रणाली), के.वि.प्रा. सेवा भवन, आर. के. पुरम, नई दिल्ली-110066  
Member (Power System), CEA, Sewa Bhawan, R. K. Puram, New Delhi-110066
10. सलाहकार (उर्जा), नीति आयोग, संसद मार्ग, नई दिल्ली, दिल्ली 110001  
Adviser (Energy), Niti Aayog, Sansad Marg, New Delhi, Delhi 110001
11. मुख्य अभियंता (जी.एम.), के.वि.प्रा. सेवा भवन, नई दिल्ली- 110066  
Chief Engineer (GM), CEA, Sewa Bhawan, New Delhi-110066
12. मुख्य अभियंता (आई.टी.), के.वि.प्रा. सेवा भवन, नई दिल्ली- 110066  
Chief Engineer (IT), CEA, Sewa Bhawan, New Delhi-110066
13. मुख्य अभियंता (ओ.पी.एम.), के.वि.प्रा. सेवा भवन, नई दिल्ली- 110066  
Chief Engineer (OPM), CEA, Sewa Bhawan, New Delhi-110066
14. मुख्य अभियंता (आईसी & सी), के.वि.प्रा. सेवा भवन, नई दिल्ली- 110066  
Chief Engineer (IC&C), CEA, Sewa Bhawan, New Delhi-110066
15. निदेशालय (अर्थशास्त्र और सांख्यिकी), विकास भवन- II, तीसरी मंजिल, B 'विंग, मेटकाफ हाउस, न. दि -110054  
Directorate of Economics & Statistics, Vikas Bhawan-II, IIIrd Floor, 'B' Wing, Metcalfe House, ND-54.

Contents	Page No.
Highlights of RE generation during May 2024	01
Summary of Renewable Energy Generation	09
All India Summary of source wise Renewable Generation	16

#### Table List:

Contents	Page No.
Table 1: All India Summary of Renewable Energy Generation	16
Table 2: Renewable Energy Generation by ISGS Stations	17
Table 3: Renewable Energy Generation by CPSU Owned stations	21
Table 4: Deviation Data for ISGS	25
Table 5: Fossil and Non-Fossil Generation for the Month of May 2024	30
Table 6: Fossil and Non-Fossil for the period of April 2024- May 2024	32
Table 7: Renewable Energy as % of Total Electricity Generated	34
Table 8: Cumulative Renewable Energy as % of Total Electricity Generated	36
Table 9: Monthly Source wise RE generation May 2024 and May 2023	38
Table10: Cumulative Source wise RE generation April 24- May 24 and April 23- May 23	41

List of Figures	Page No.
Figure 1: All India Month wise RE Capacity Addition	02
Figure 2: All India Month wise Solar Capacity Addition	03
Figure 3: All India Month wise Wind Capacity Addition	03
Figure 4: RE capacity added during the Month	04
Figure 5: Source wise addition in RE Installed Capacity	04
Figure 6: Installed Capacity in India as on 31.05.2024	05
Figure 7: Cumulative Total Energy Generation in India and Share of RE Generation	05
Figure 8: Total Energy Generation in India and Share of RE in the month of May 2024	06
Figure 9: RE Generation Region Wise of May -2024	06
Figure 10: RE Cumulative Generation Region Wise Upto (April 2024 to May 2024)	07
Figure 11: Source wise breakup of RE Generation in the month of May 2024	07
Figure 12: Source wise breakup of Cumulative RE Generation for 2023-24 ( Upto May 2024)	08
Figure 13: Summary of Renewable Energy Generation	09
Figure 14: Additional RE Generation in May 2024 as compared to May 2023	09
Figure 15: Month Wise Growth of RE Generation in year 2024-25 w.r.t to previous year of same Month	10
Figure 16: Comparison of Month Wise RE Generation in year 2023-24 & in year 2024-25	10
Figure 17: Month Wise Wind Power Generation in 2023-24 & in year 2024-25	11
Figure 18: Month Wise Solar Power Generation in 2023-24 & in year 2024-25	11
Figure 19: Month Wise Biomass Power Generation in 2023-24 & in year 2024-25	12
Figure 20: Month Wise Bagasse Power Generation in 2023-24 & in year 2024-25	12
Figure 21: Month Wise Small Hydro Power Generation in 2023-24 & in year 2024-25	13
Figure 22: Month Wise Large Hydro Power Generation in 2023-24 & in year 2024-25	13
Figure 23: Month Other RE (Waste Heat etc.) Power Generation in 2023-24 & in year 2024-25	14
Figure 24: Year wise RE generation	14
Figure 25: Daily Solar and wind Power Generation Trend in the month of May 2024	15

## Highlights of RE GENERATION

1. RE capacity addition during May 2024 has been 1900.24 MW (Solar – 1639.56 MW, Wind – 260.68 MW).
2. All India RE generation during May 2024 has increased by 9.09 % as compared to May 2023.
3. Large Hydro Power generation during May 2024 as compared to May 2023 has increased by 9.92 % on All India Basis except Maharashtra, Andhra Pradesh, Telangana, Karnataka, Kerala and Tamil Nadu.
4. Solar Power generation during May 2024 as compared to May 2023 has increased by 17.35 % on All India Basis except Punjab, Andhra Pradesh and Karnataka.
5. Wind Power generation during May 2024 as compared to May 2023 has increased by 1.72 % on All India Basis except Rajasthan, Gujarat.
6. Biomass Power generation during May 2024 as compared to May 2023 has decreased by 6.90 %.
7. Bagasse power generation during May 2024 as compared to May 2023 has decreased by 41.15 %.
8. Others (Waste to Energy) Power generation has increased by 6.35 % during May 2024 as compared to May 2023 on All India basis except Uttar Pradesh, West Bengal.
9. Small Hydro Power generation during May 2024 as compared to May 2023 has increased by 0.94 % on All India Basis except Jammu & Kashmir, Maharashtra, Andhra Pradesh, Karnataka, and West Bengal.
10. The generation from ISGS stations (Solar and Wind plants) for the month of May 2024 is 6664.51 MUs which is 18.98 % of the Monthly RE generation during the month.
11. The generation from CPSUs for the month of May 2024 is 844.88 MUs which is 2.41 % of the Monthly RE generation during the month.

### All India RE Capacity Addition

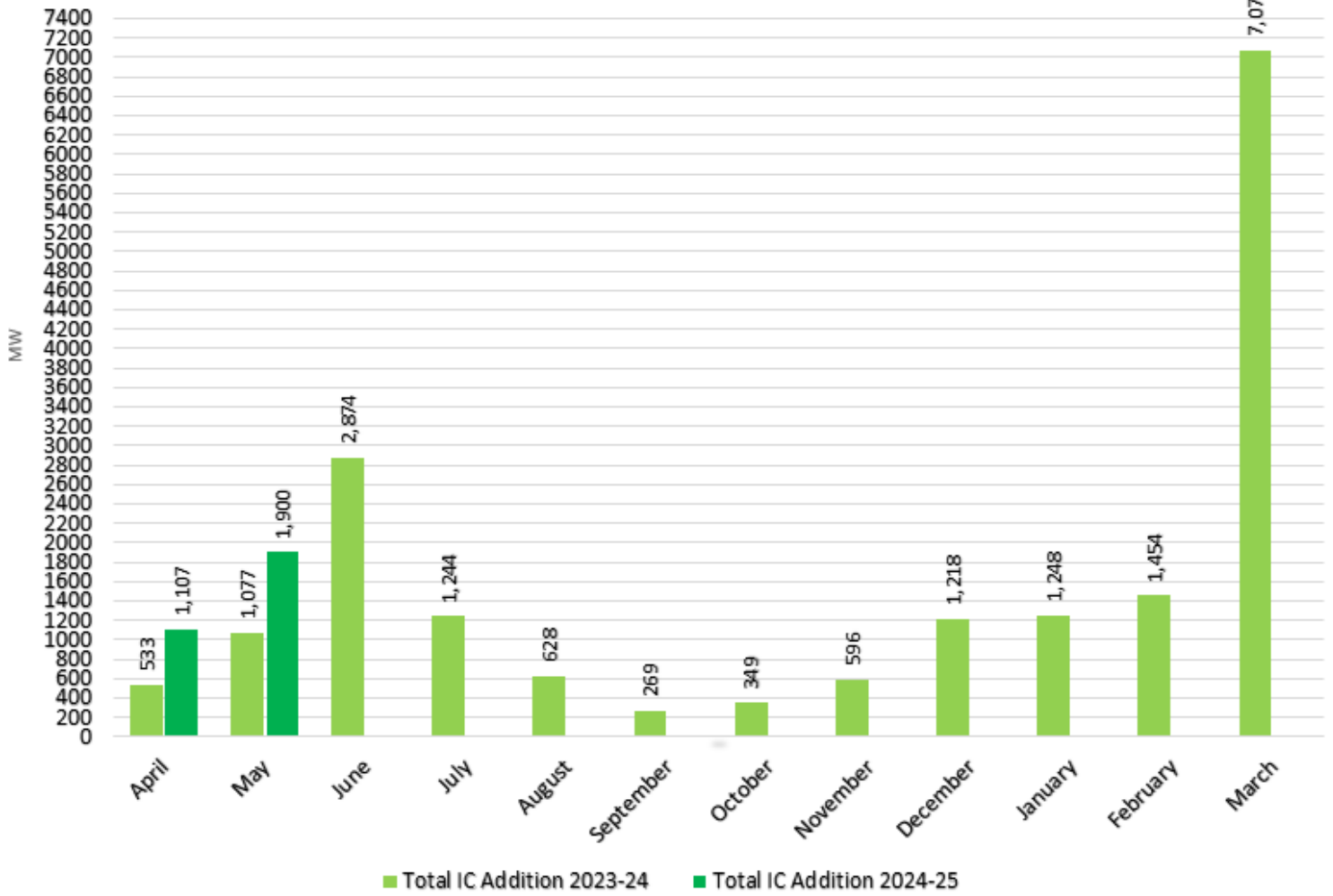
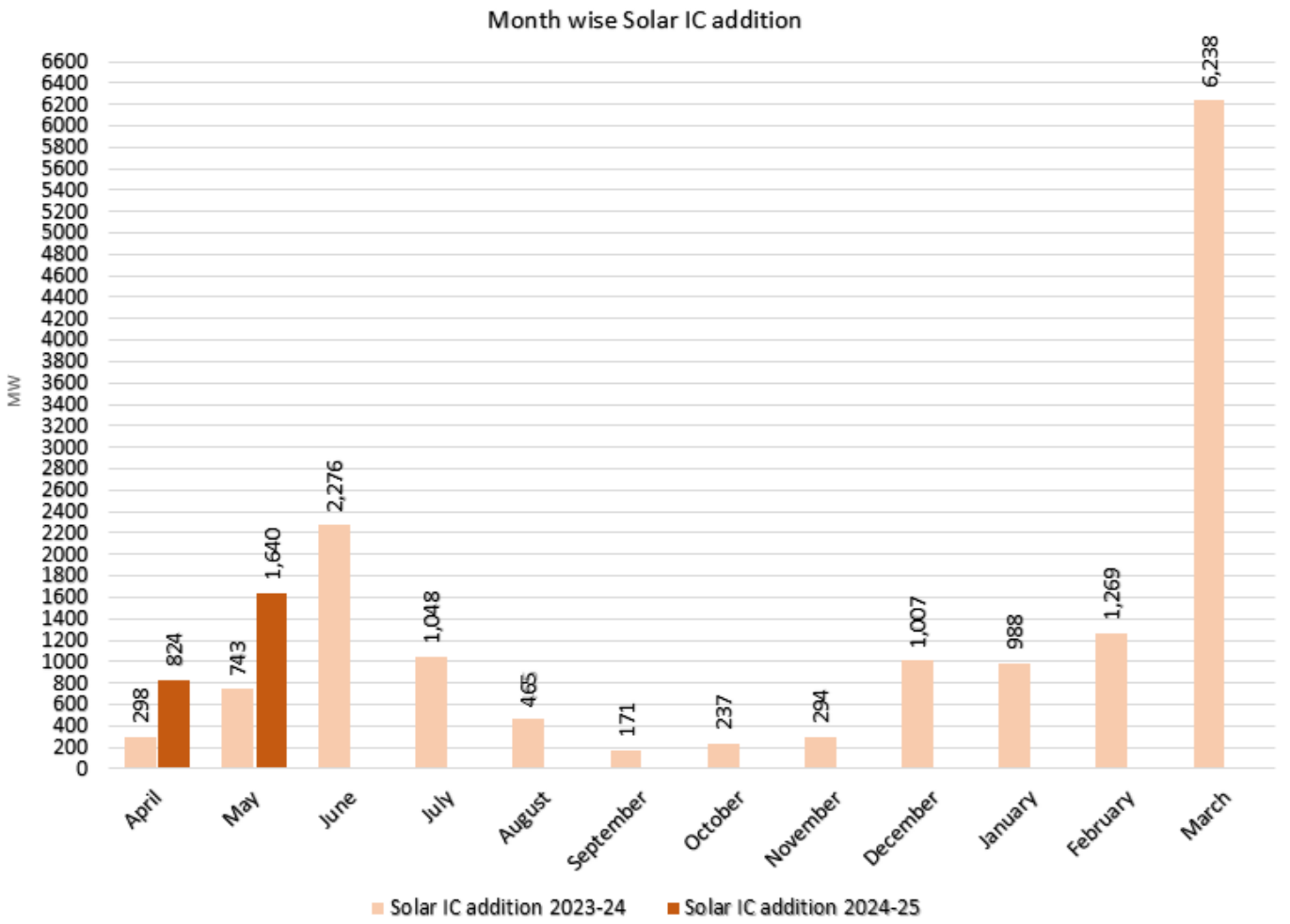
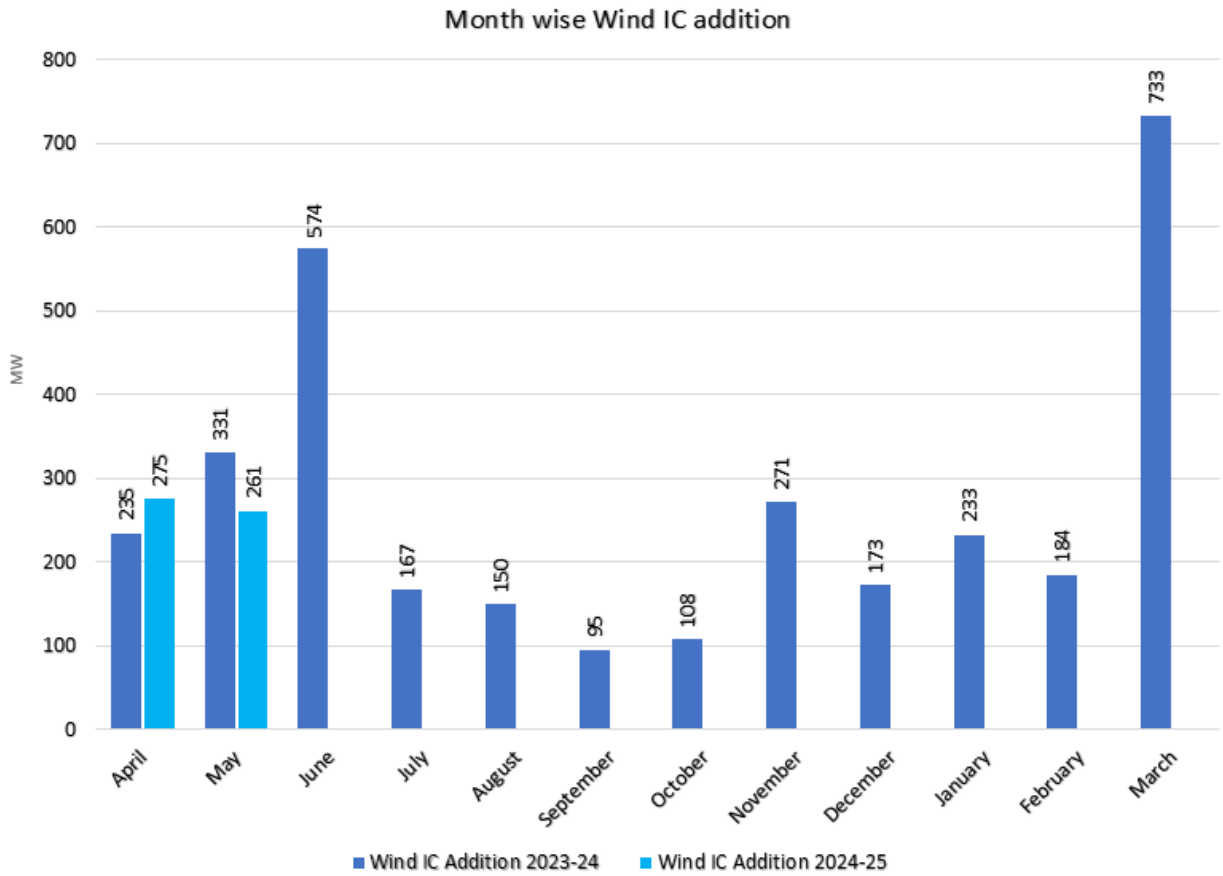


Figure 1: All India Month wise RE Capacity Addition



**Figure 2: All India Month wise Solar Capacity Addition**



**Figure 3: All India Month wise Wind Capacity Addition**

# Summary of RE Capacity Addition for the Month of May'24

Increased by 76.48 % as compared to May 23.

Increased by 71.65 % as compared to April 24.

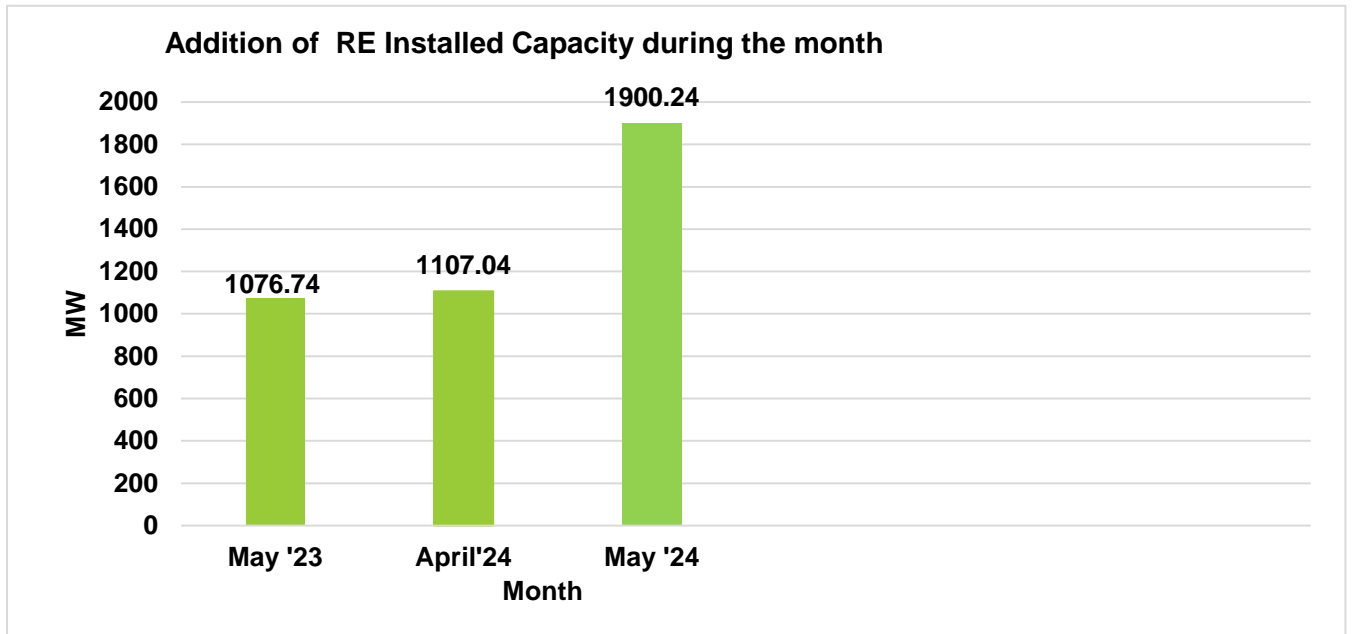


Figure 4: RE capacity added during the Month

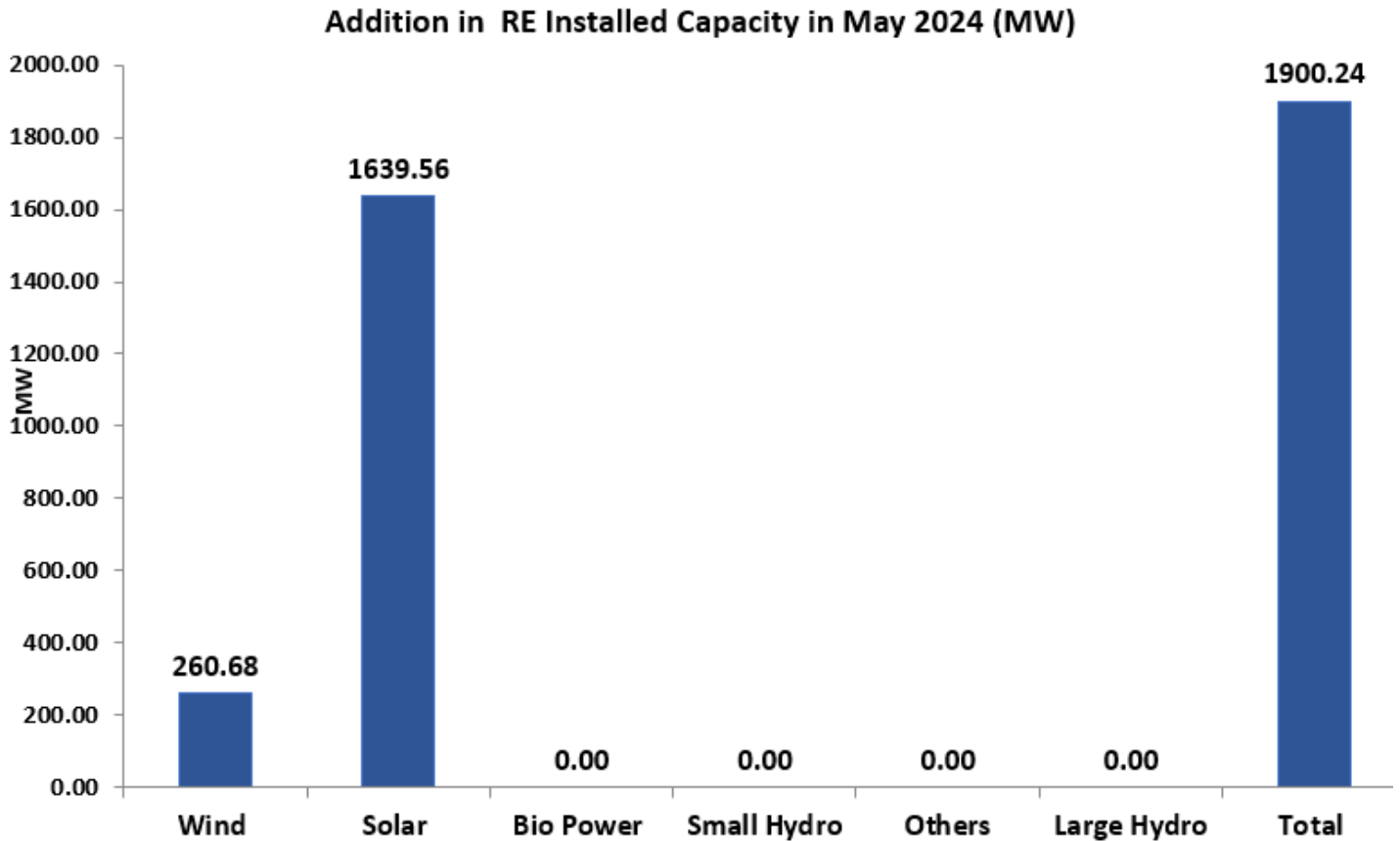


Figure 5: Source wise addition in RE Installed Capacity in May 24

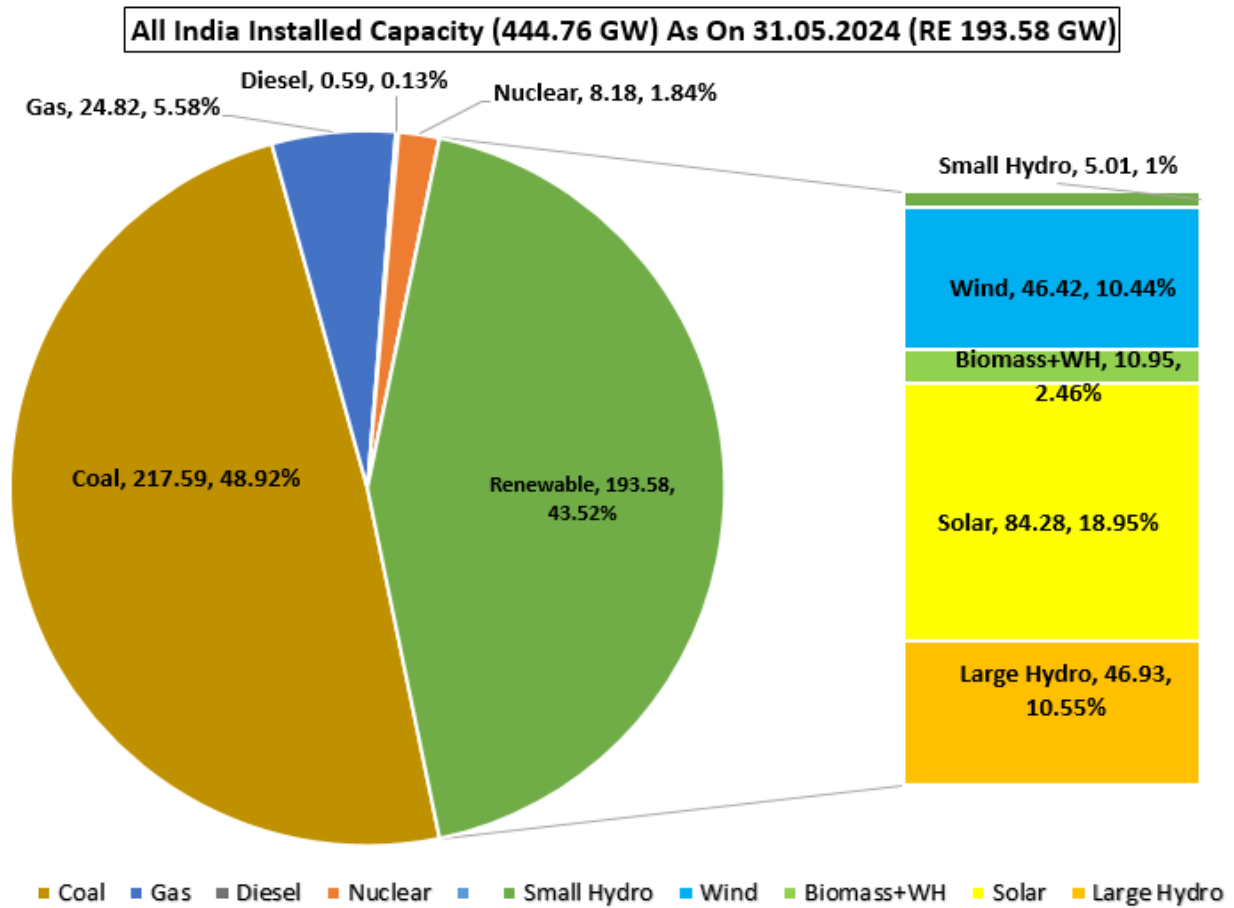


Figure 6: Installed Capacity in India as on 31.05.2024

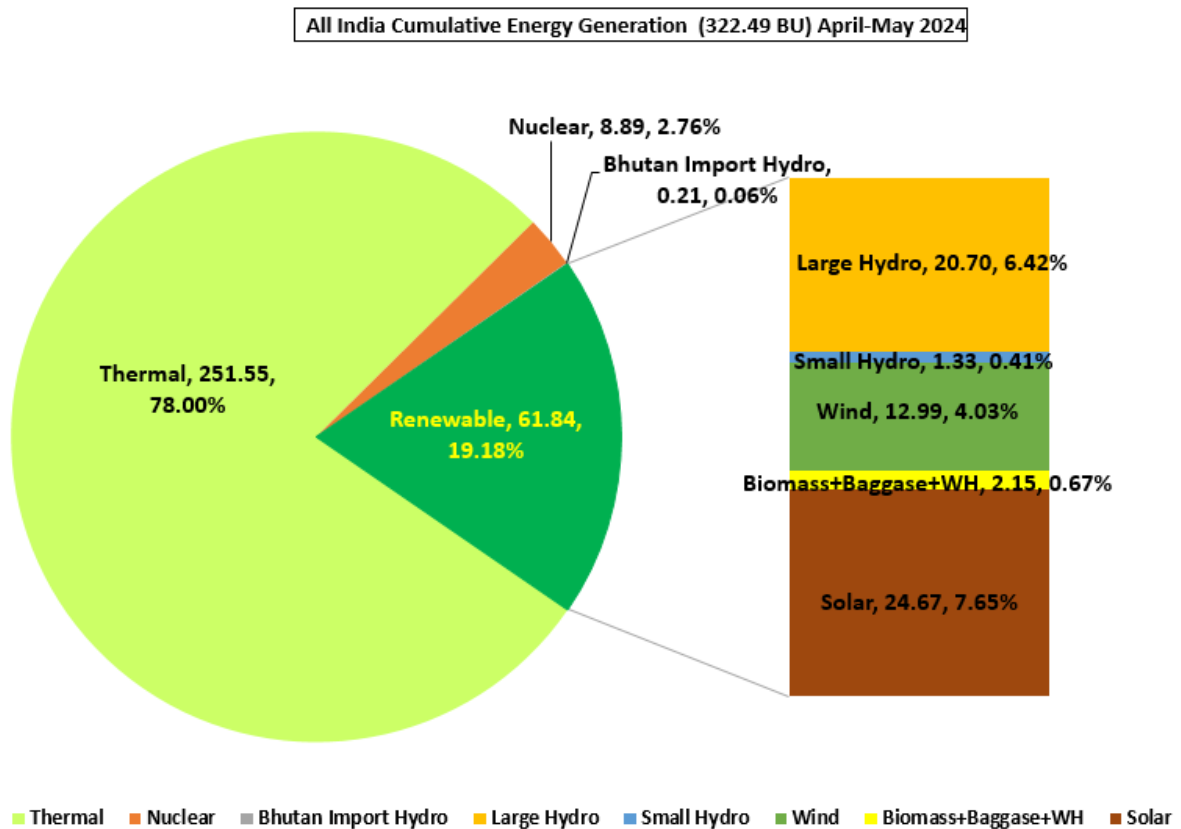
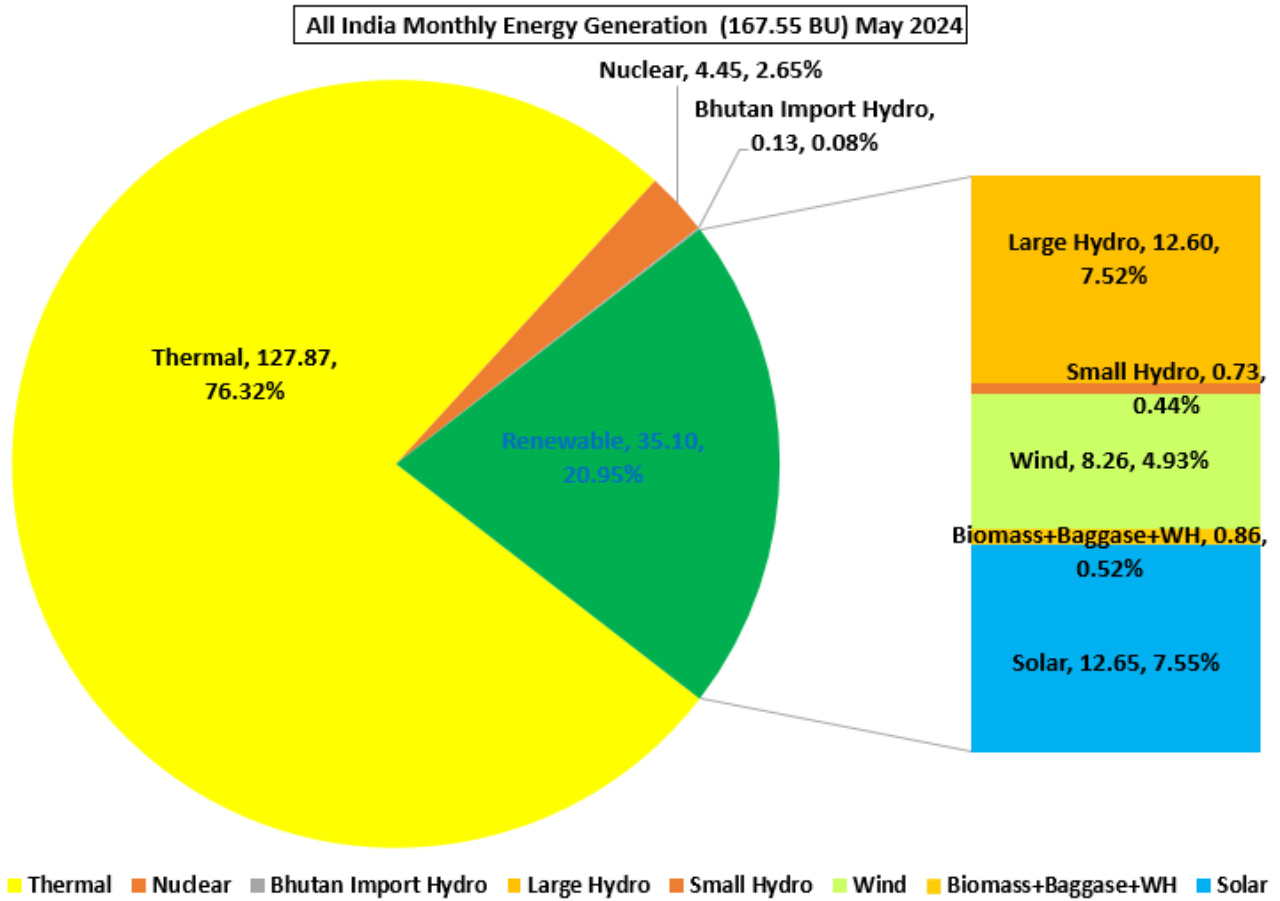
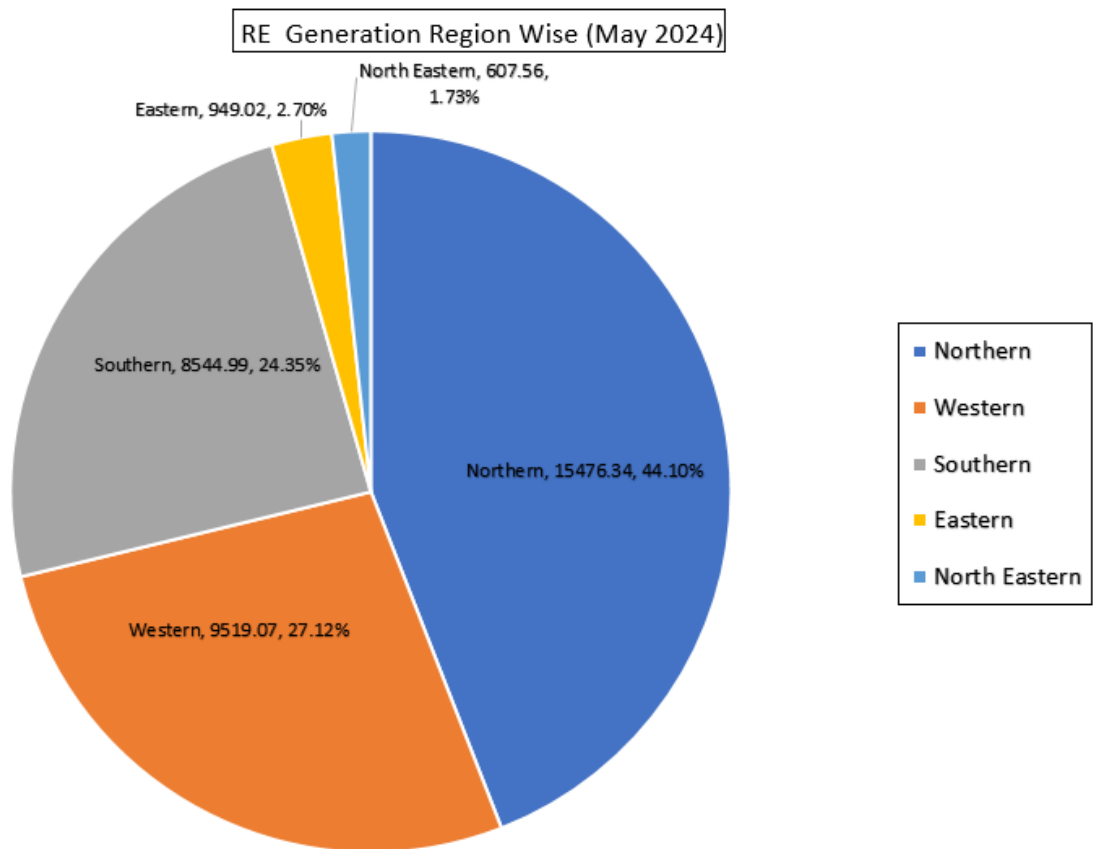


Figure 7: Cumulative Total Energy Generation in India and Share of RE for the year 2024-25





**Figure 8: Total Energy Generation in India and Share of RE in the month of May 2024**



**Figure 9: RE Generation Region Wise of May -2024**

RE Cumulative Generation Region Wise Upto (April to May 2024)

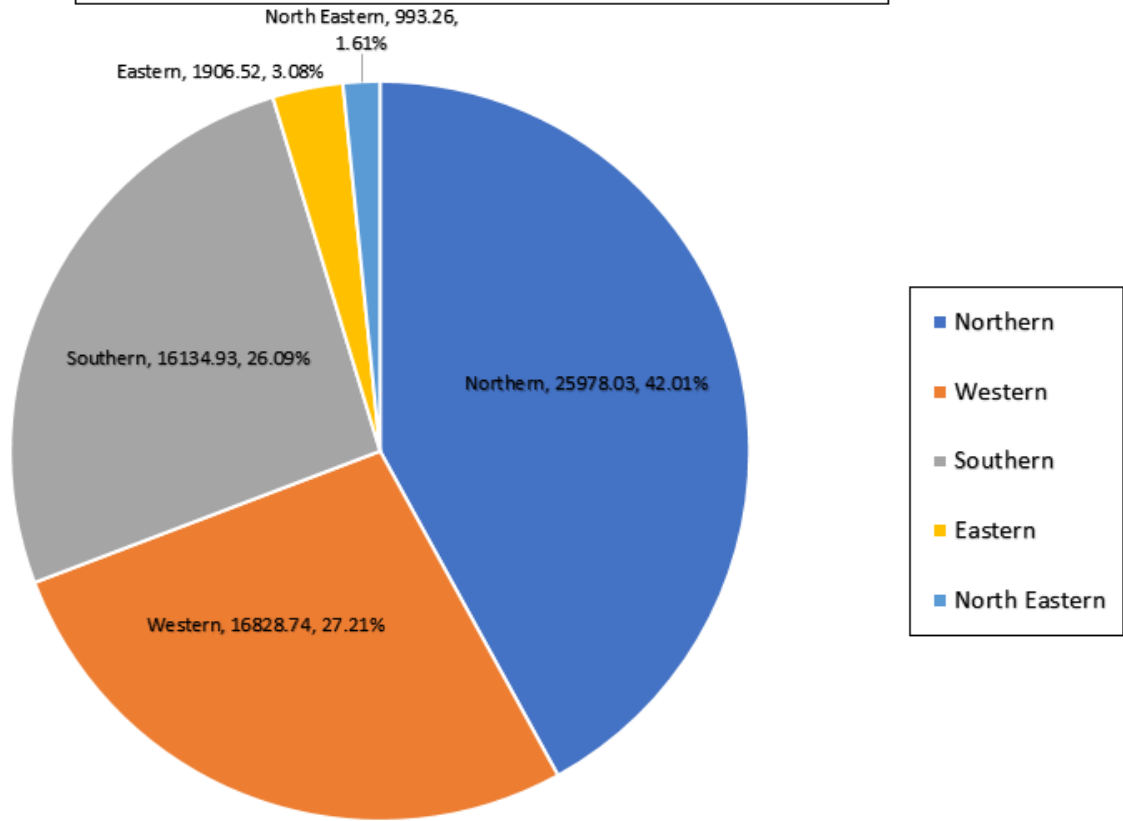


Figure 10: RE Cumulative Generation Region Wise Upto (April 2024 to May 2024)

Source wise breakup of RE Generation for Month May 2024 (35096.98 MU)

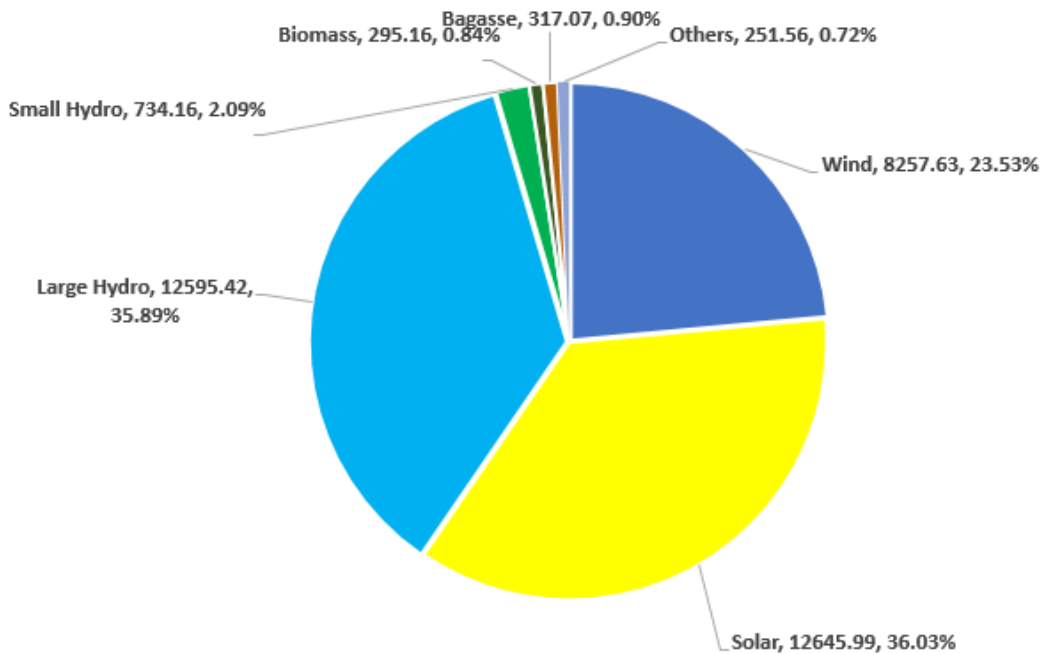


Figure 11: Source wise breakup of RE Generation in the month of May -2024

Source wise breakup of cumulative RE Generation for April 2024 to May 2024 (61841.48 MU)

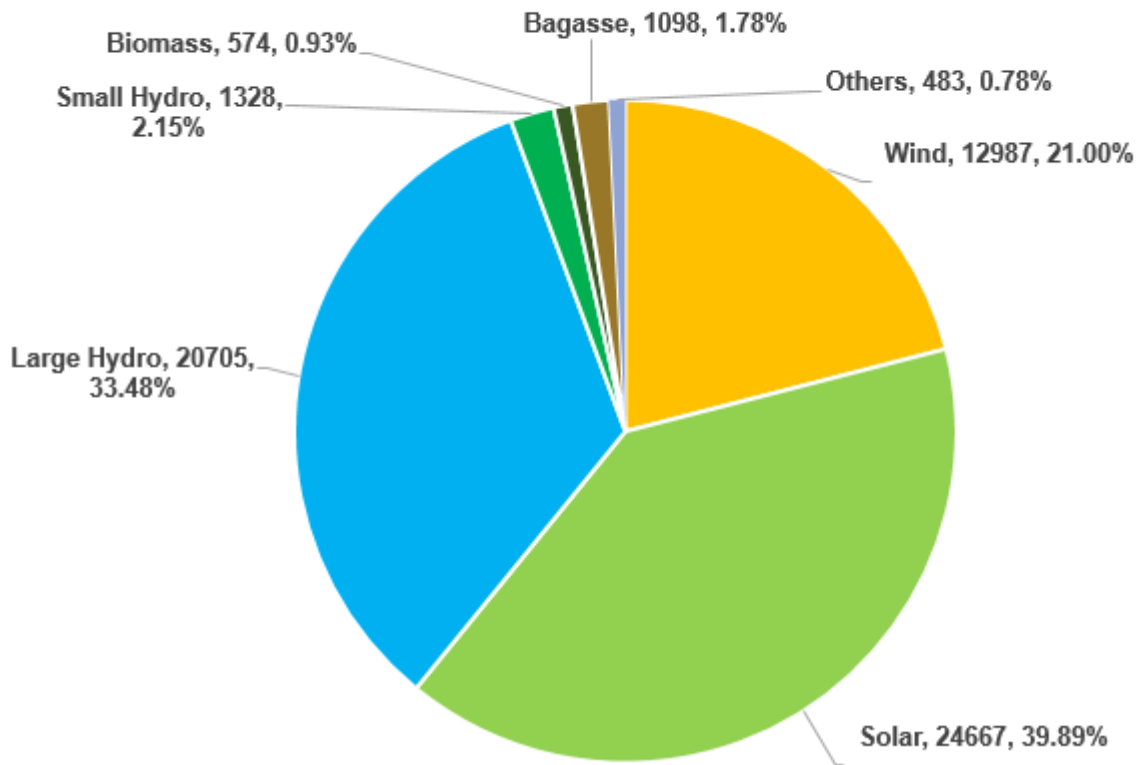


Figure 12: Source wise breakup of Cumulative RE Generation for the year 2024-25.

# Summary of Renewable Energy Generation

Increased by 9.09 % as compared to May' 23

Increased by 31.23 % as compared to April'24

## Renewable Energy Generation

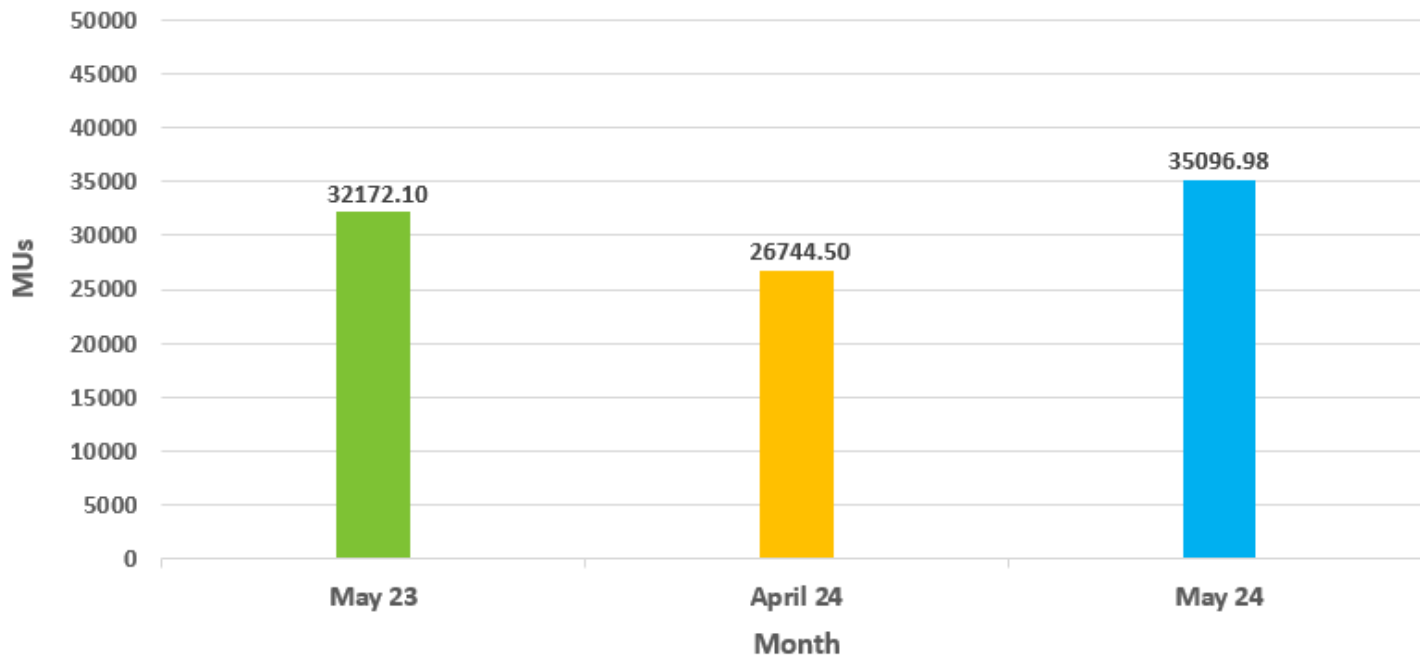


Figure 13: Renewable Energy Generation

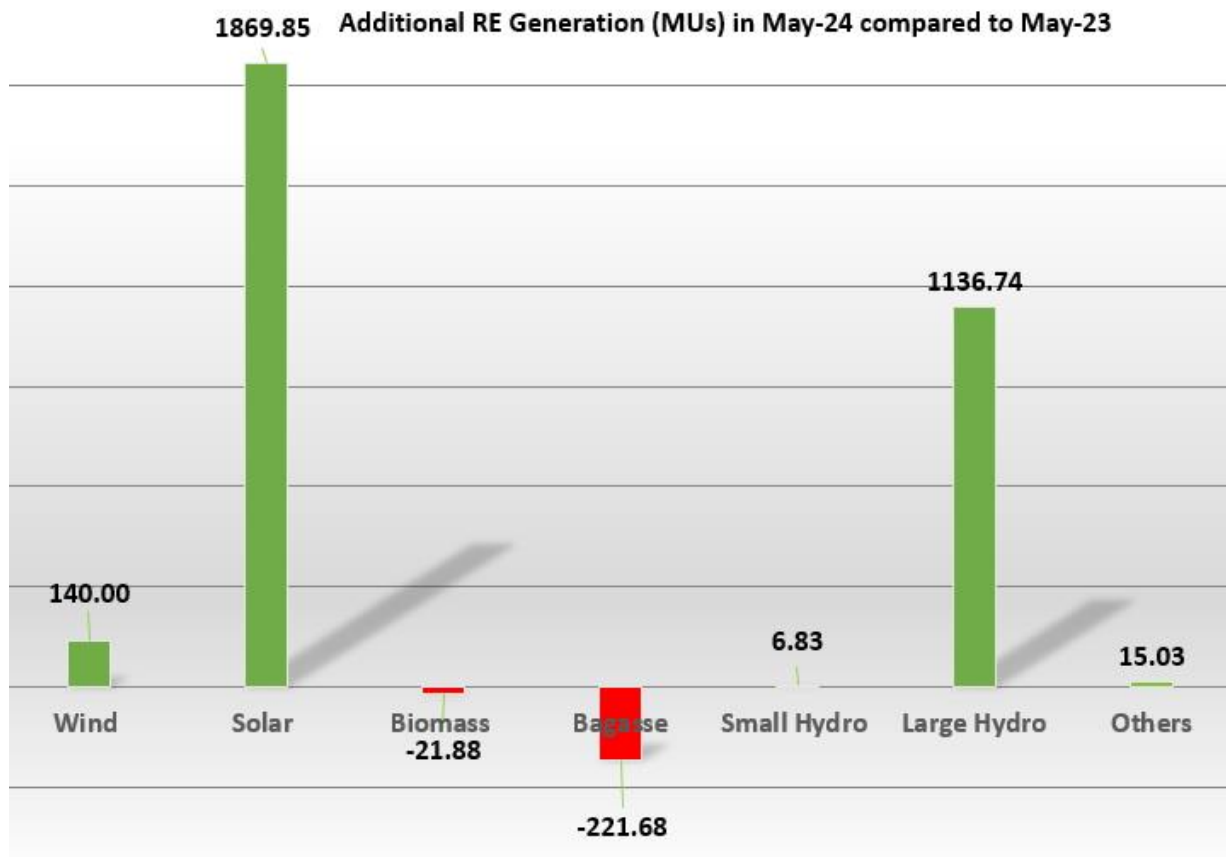


Figure 14: Additional RE Generation in May -24 as compared to May -23

India Renewable Energy Growth rate % increase over same Month in the last year

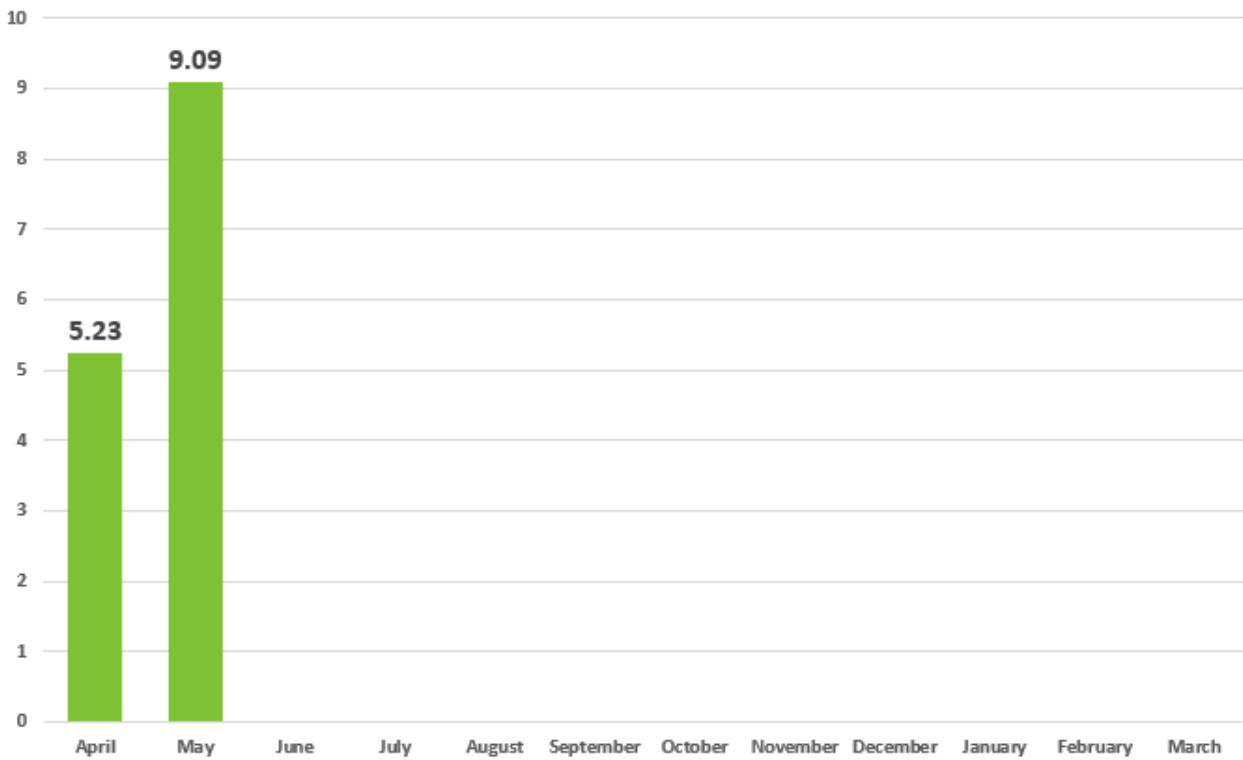


Figure 15: Month Wise % Growth of RE Generation in year 2024-25 w.r.t to previous year Same Month.

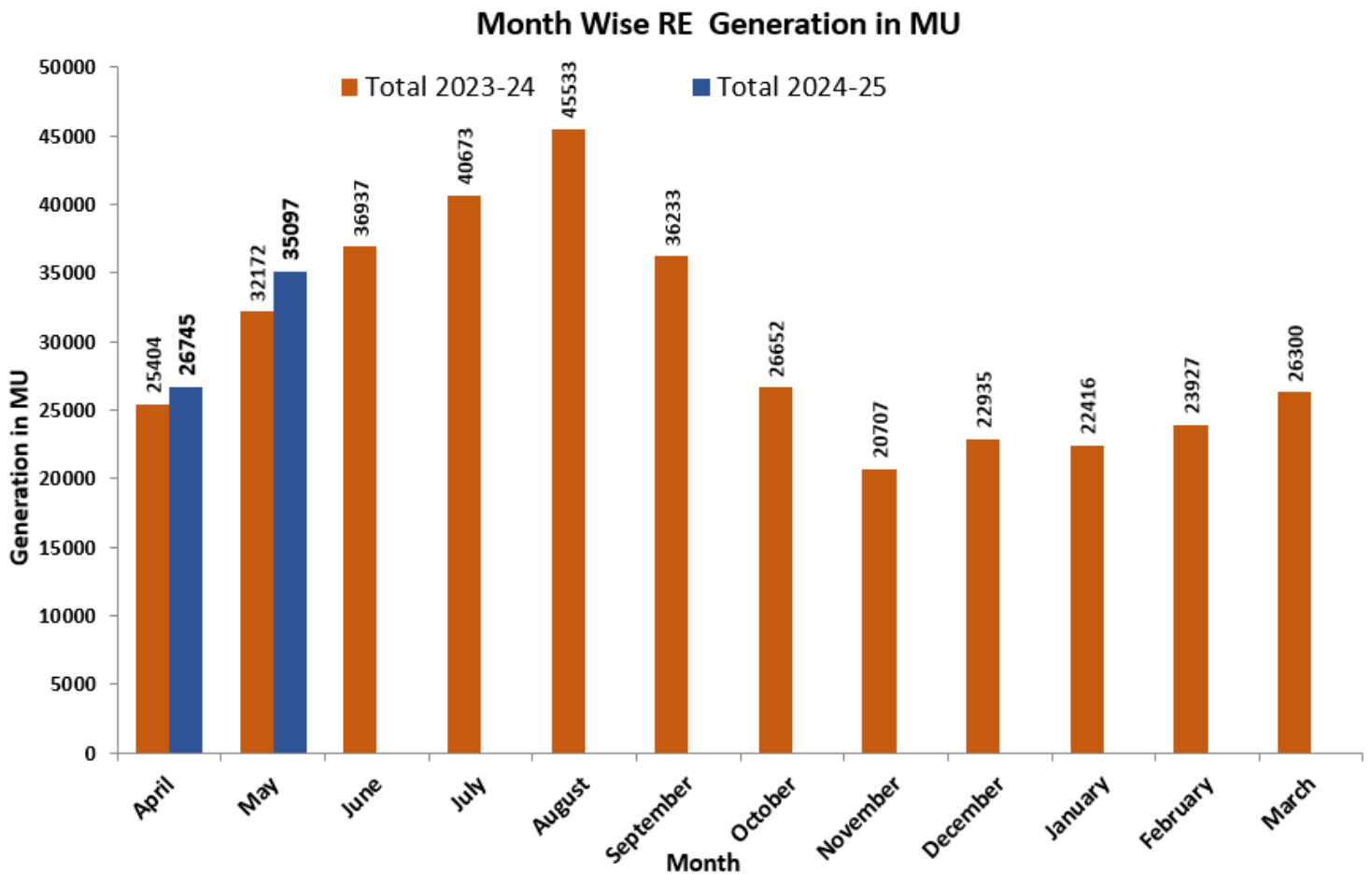


Figure 16: Comparison of Month Wise RE Generation in year 2023-24 & in year 2024-25.

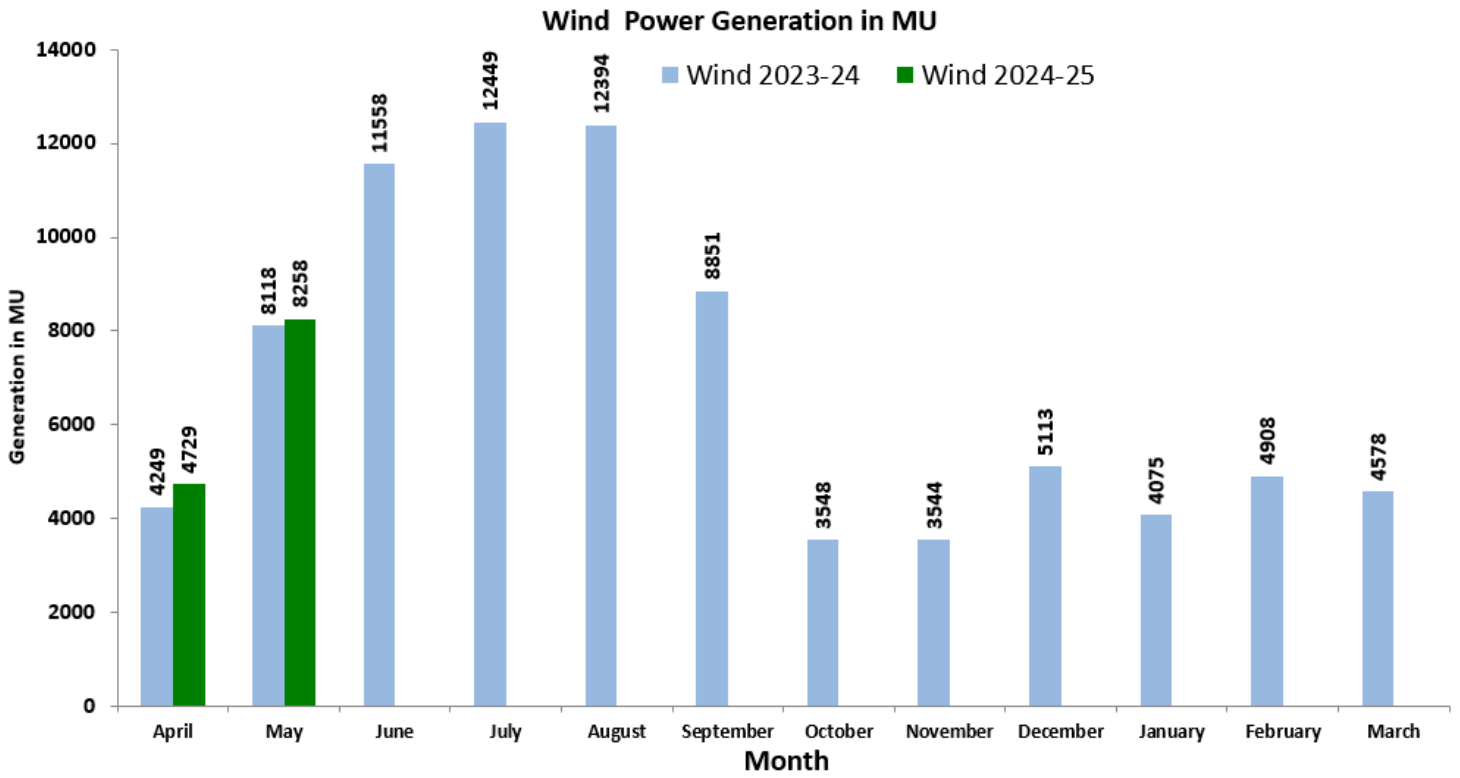


Figure 17: Month Wise Wind Power Generation for the year 2023-24 and year 2024-25.

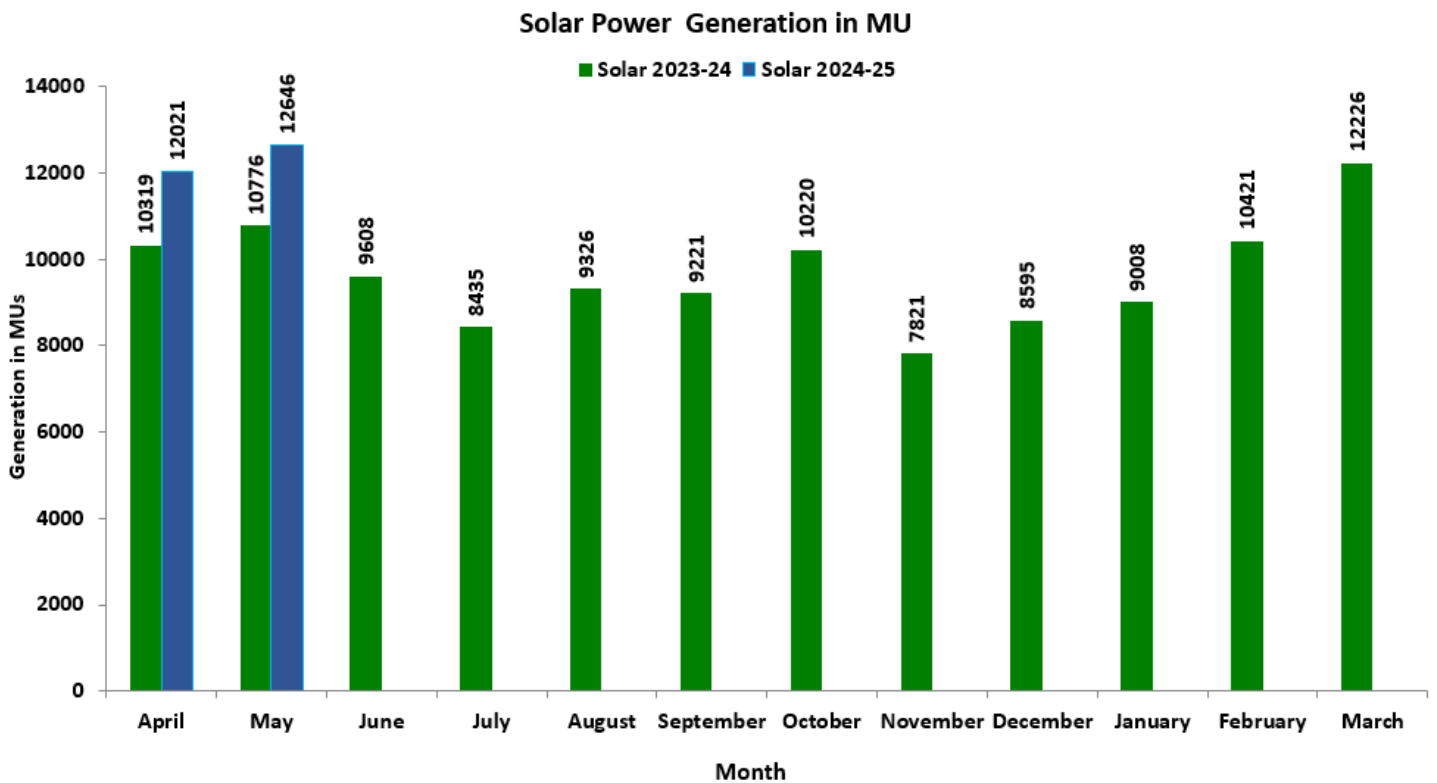


Figure 18: Month Wise Solar Power Generation for the year 2023-24 and year 2024-25.

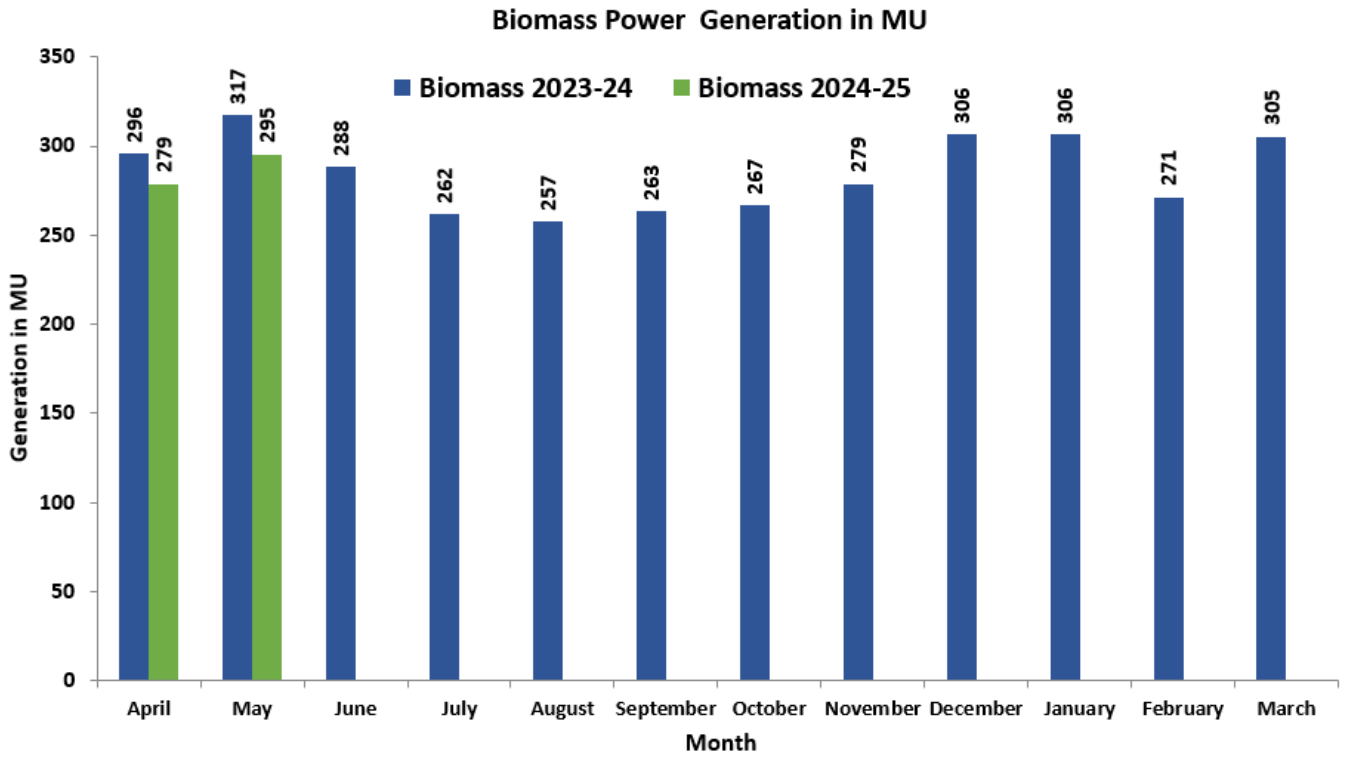


Figure 19: Month Wise Biomass Power Generation for the year 2023-24 and year 2024-25.

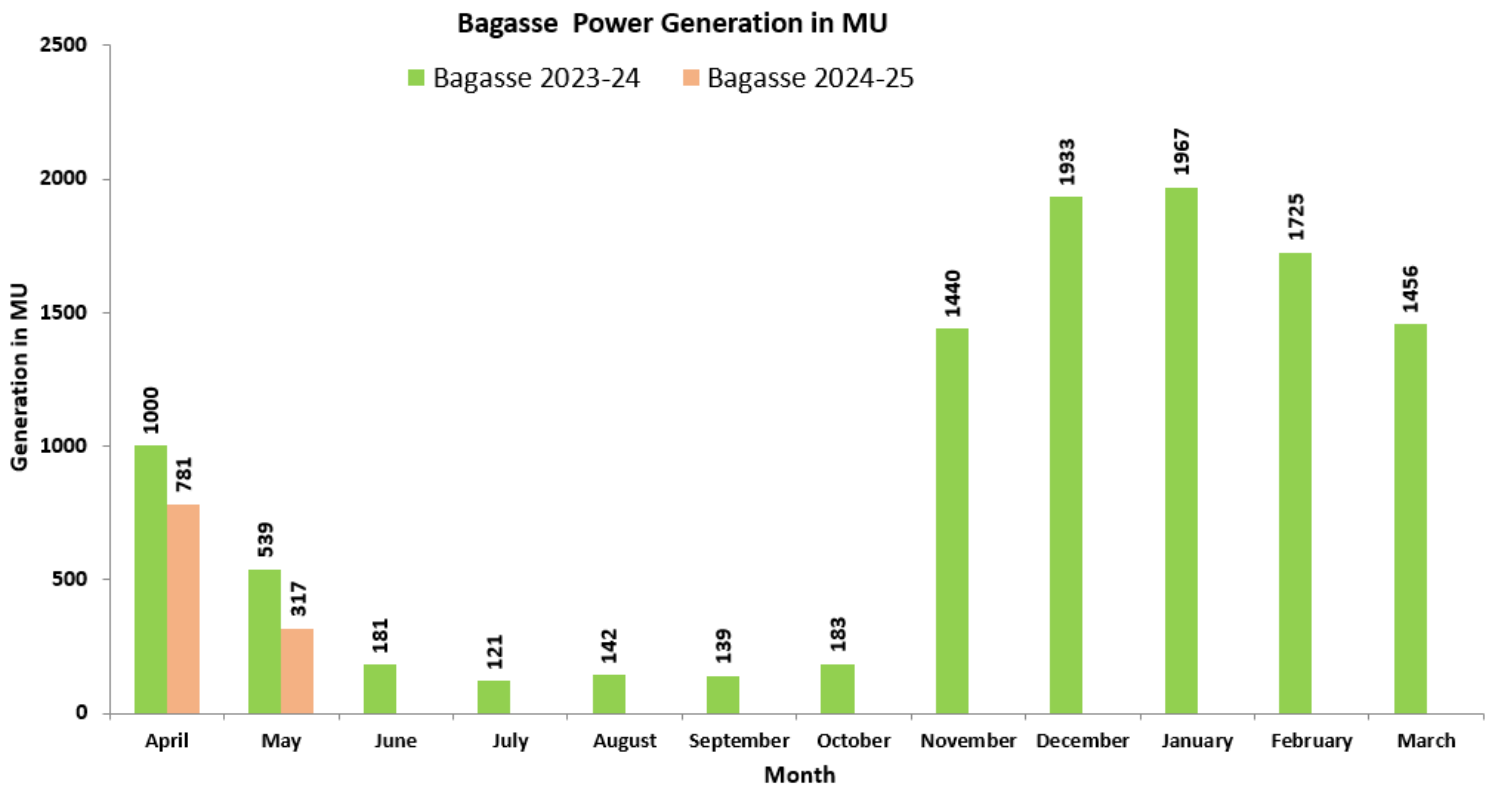


Figure 20: Month Wise Bagasse Power Generation for the year 2023-24 and year 2024-25.

### Small Hydro Power Generation in MU

■ SHP 2023-24 ■ SHP 2024-25

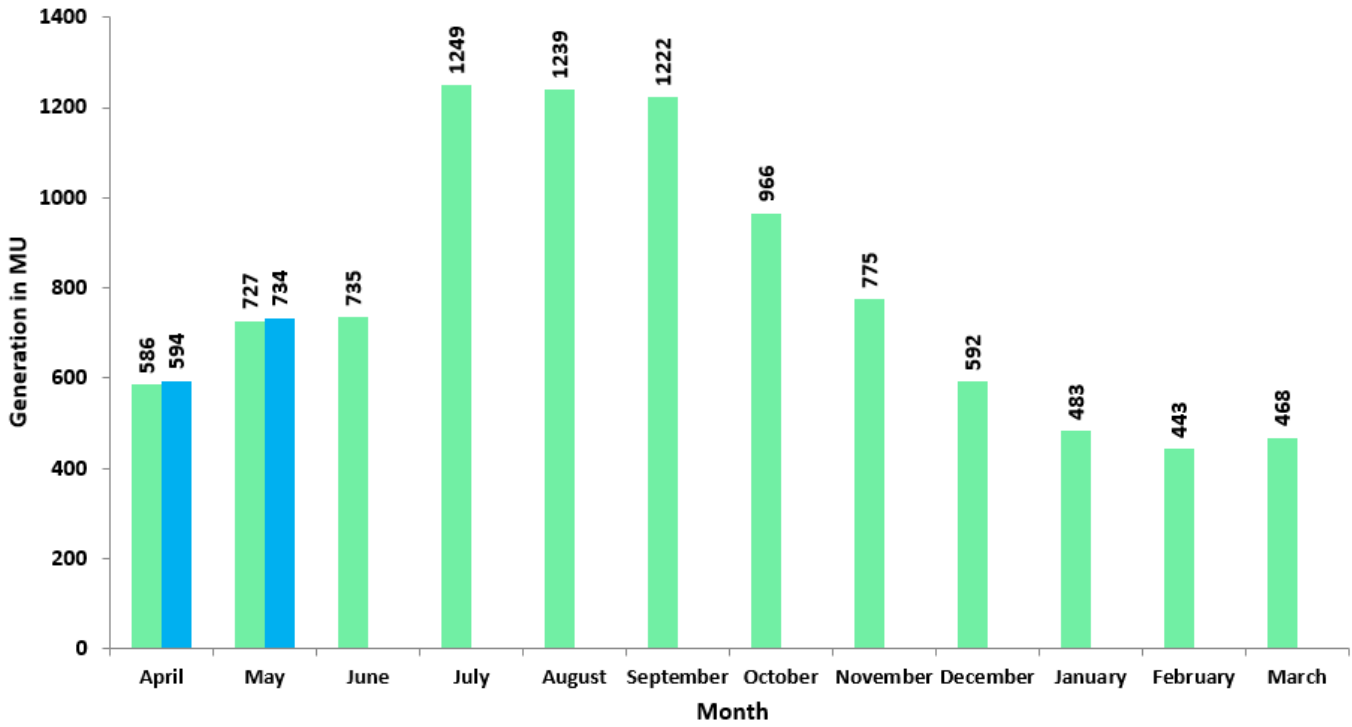


Figure 21: Month Wise Small Hydro Power Generation for the year 2023-24 and year 2024-25.

### Large Hydro Power Generation MU

■ Large Hydro 2023-24 ■ Large Hydro 2024-25

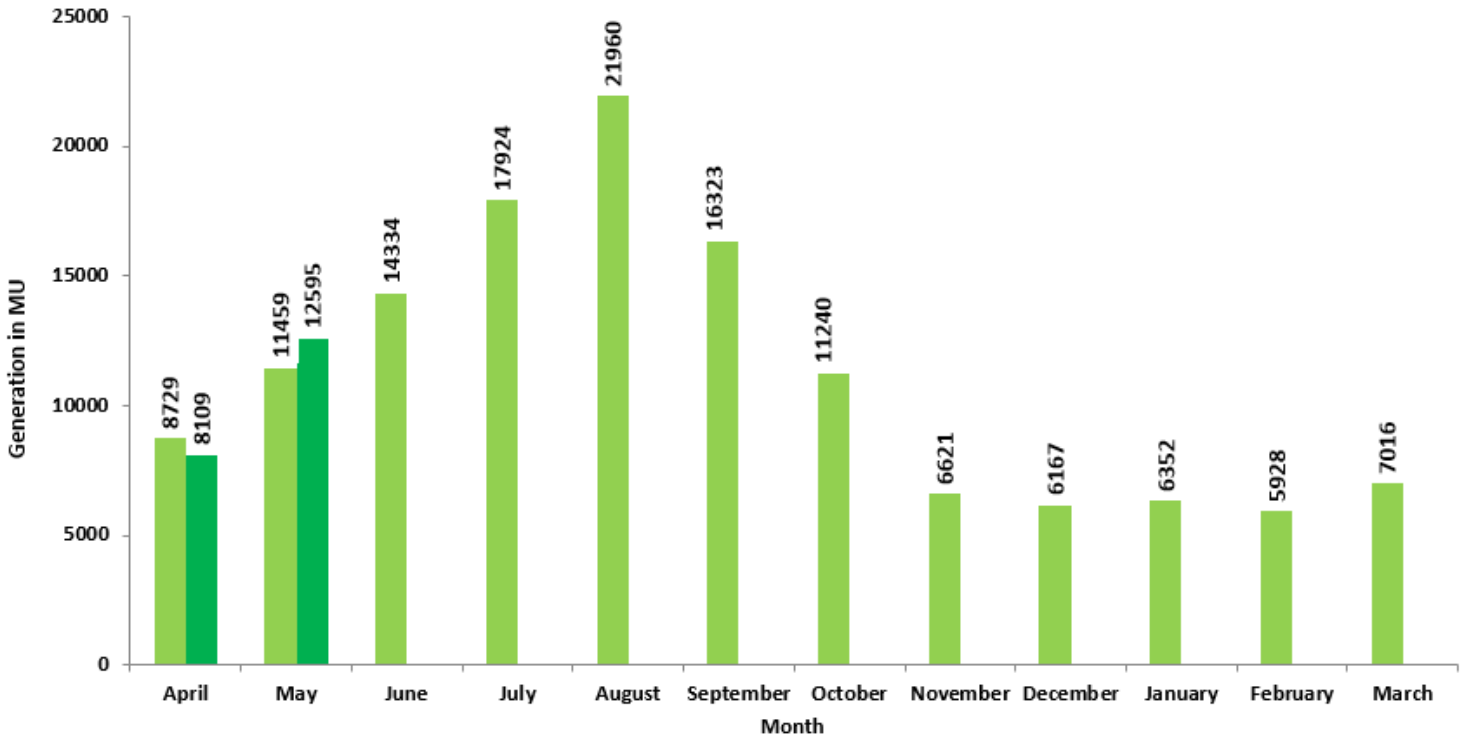


Figure 22: Month Wise Large Hydro Power Generation for the year 2023-24 and year 2024-25.



Power Generation from other RE sources in MU

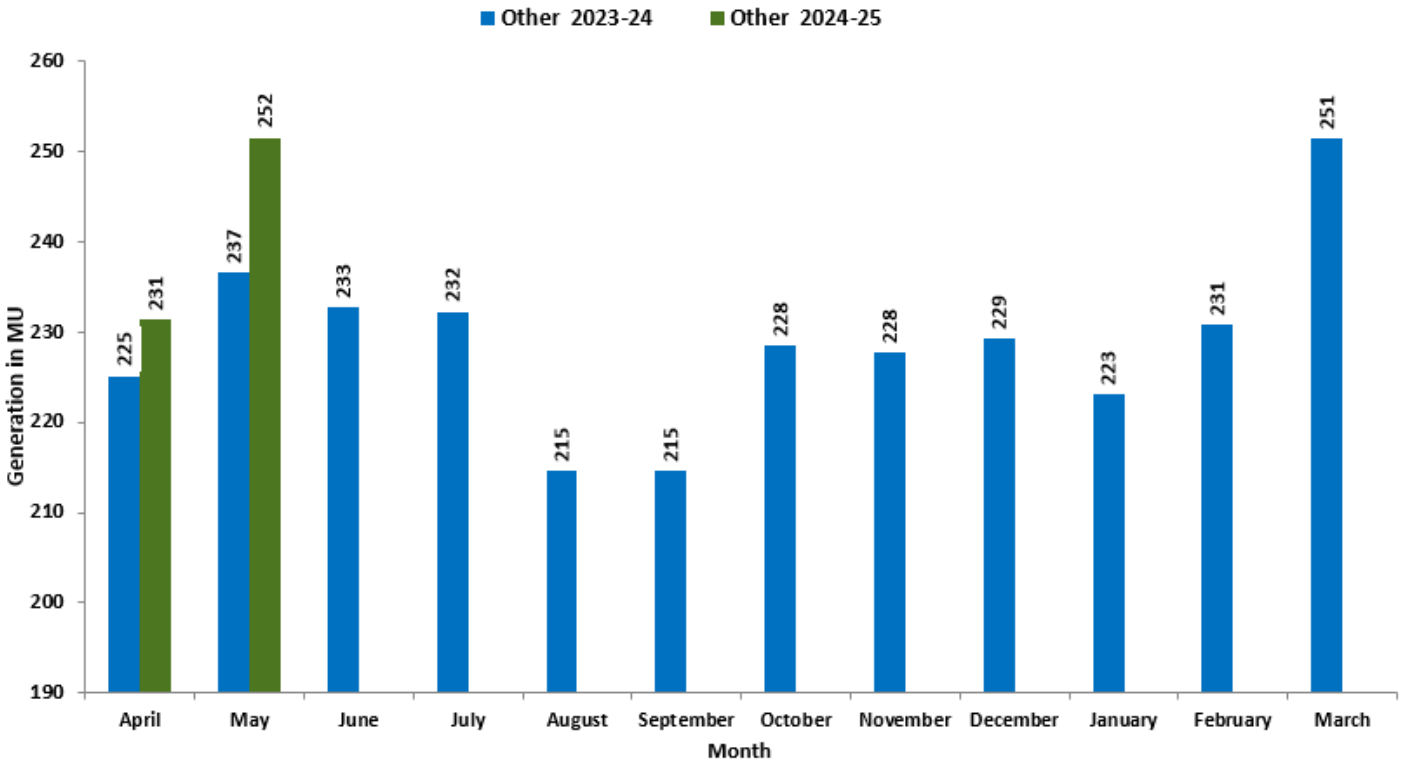


Figure 23: Month Wise Other RE (Waste Heat etc.) Power for the year 2023-24 and year 2024-25.

Year wise Generation of RE in MU

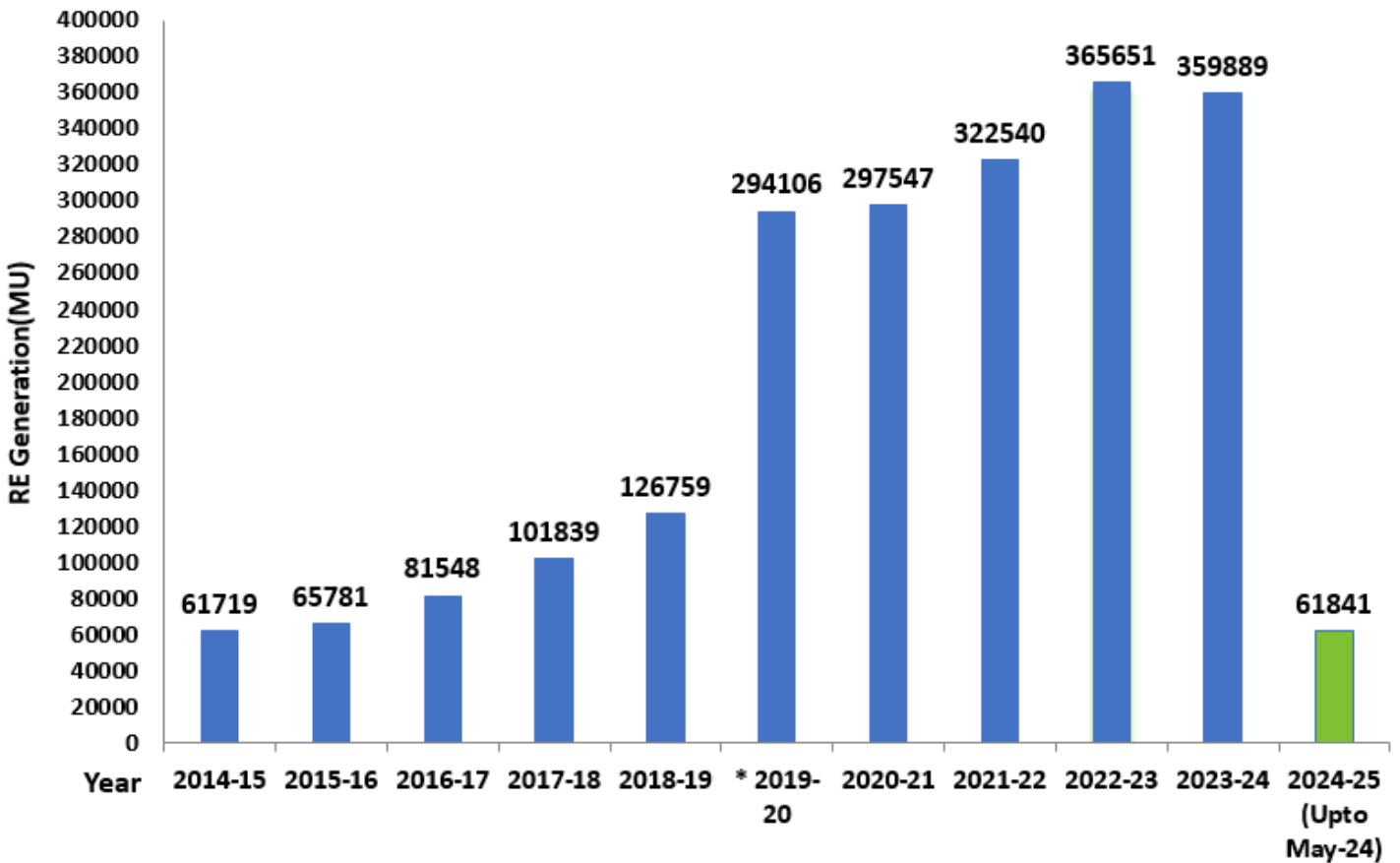
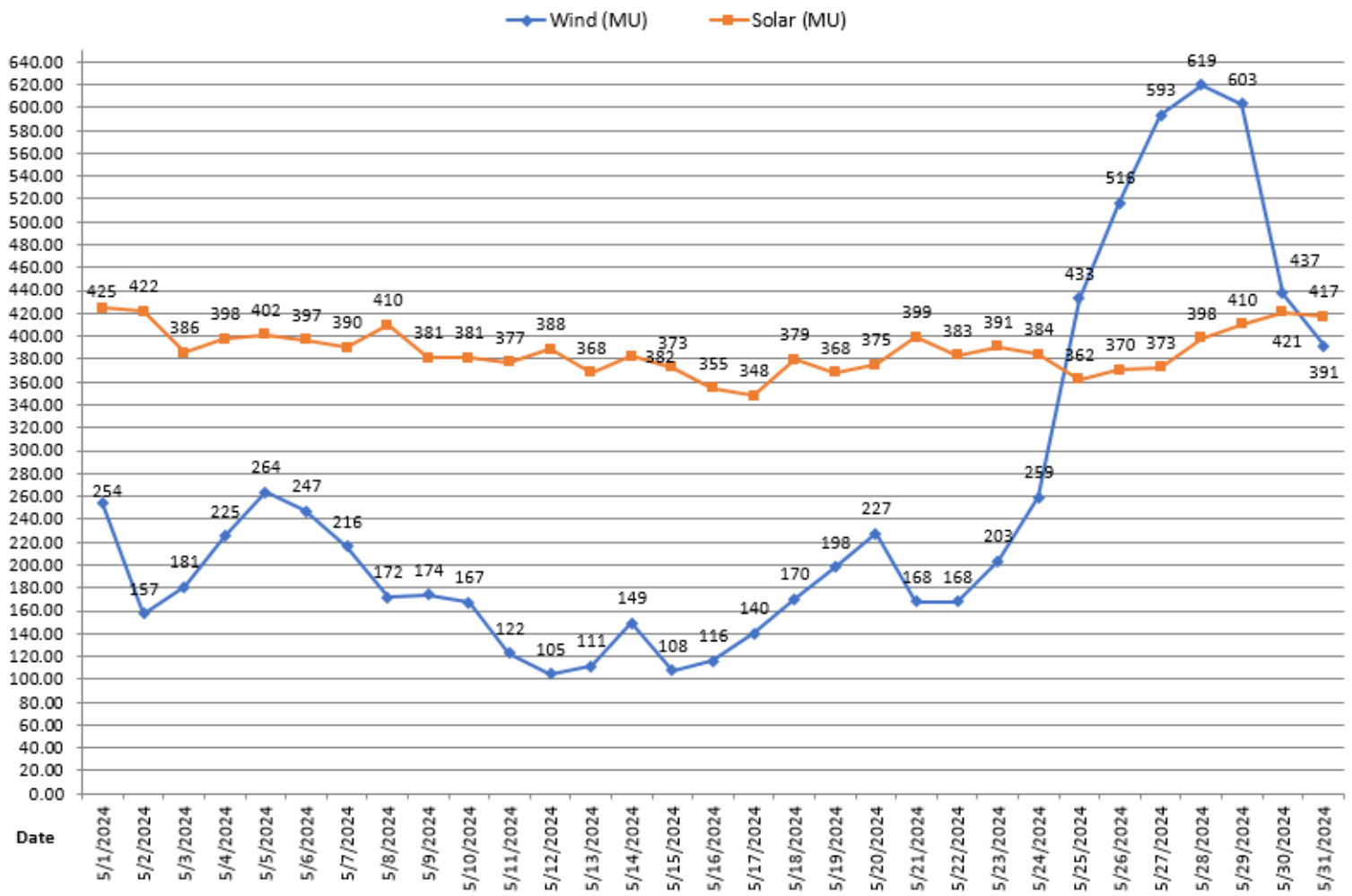


Figure 24: Year Wise RE Generation

(\*) Note:- As per Ministry of Power’s Order dated 8th May, 2019 large hydro power project (above 25MW) are also being considered as Renewable Energy Source.

## All India Wind & Solar Power Daily Generation Report (May,2024)



**Figure 25: Daily solar and wind power generation trend in the month of May -2024**

## Summary of All India Total Renewable Energy Generation

Table 1 All India Summary of Renewable Energy Generation

Category	Installed Capacity (MW) (as on 31.05.2024)	Monitored Capacity (MW) (as on 31.05.2024) for which generation data is available	RE Generation(MU) May'2024	RE Generation(MU) May'2023	% of same Month Last Year	RE Generation (MU) April'2023- May'2024	RE Generation (MU) April'2022- May'2023	% of same period Last Year
पवन/Wind	46422.47	46197.32	8257.63	8117.63	101.72	12986.89	12366.83	105.01
सौर/Solar	84277.42	70918.85(*)	12645.99	10776.14	117.35	24667.04	21094.84	116.93
बायोमास/Biomass	10355.35	9751.51	295.16	317.04	93.10	573.89	612.66	93.67
बगास/Bagasse			317.07	538.75	58.85	1098.18	1539.07	71.35
लघु जल विद्युत्/Small Hydro	5005.25	4258.50	734.16	727.33	100.94	1328.00	1313.54	101.10
बृहत् जल विद्युत्/Large Hydro(\$)	46928.17	46928.17	12595.42	11458.68	109.92	20704.56	20187.65	102.56
अन्य/Others	591.30	815.19	251.56	236.53	106.35	482.92	461.64	104.61
कुल/Total Excluding Large Hydro	146651.79	131941.37	22501.56	20713.42	108.63	41136.92	37388.56	110.02
कुल/Total Including Large Hydro	193579.96	178869.54	35096.98	32172.10	109.09	61841.48	57576.21	107.41

(\*) Solar Installed capacity including 2.5 GW rooftop solar.

(\$) Large Hydro Generation data excludes import from Bhutan. However, the import from Bhutan during May 2024 and April 24 - May 24 are 133.20 MUs and 208.80 MU respectively.

**Table 2: Renewable Energy Generation (Wind and Solar) by ISGS Stations for the Month of May 2024.**

Station	State/ Region	Sector (Central/State/ Private)	Type	Generation (MU)
<b>Unchahar Solar</b>	Uttar Pradesh	Central	Solar	1.36
<b>Dadri Solar</b>	Uttar Pradesh	Central	Solar	0.62
<b>Singrauli Solar</b>	Uttar Pradesh	Central	Solar	1.92
<b>Auraiya</b>	Uttar Pradesh	Central	Solar	6.95
<b>Kolayat</b>	Rajasthan	Central	Solar	96.03
<b>Nokhra</b>	Rajasthan	Central	Solar	63.66
<b>Devikot</b>	Rajasthan	Central	Solar	49.88
<b>ABC Renewable Energy</b>	Rajasthan	Private	Solar	71.30
<b>Acme Chittorgarh Energy Pvt Ltd.</b>	Rajasthan	Private	Solar	58.58
<b>Acme Heergharh Powertech Pvt Ltd</b>	Rajasthan	Private	Solar	72.37
<b>Adani Hybrid Energy Jaisalmer Four Limited</b>	Rajasthan	Private	Solar	188.48
<b>Adani Hybrid Energy Jaisalmer One Limited</b>	Rajasthan	Private	Solar	89.21
<b>Adani Hybrid Energy Jaisalmer Three Limited</b>	Rajasthan	Private	Solar	86.46
<b>Adani Hybrid Energy Jaisalmer Two Limited</b>	Rajasthan	Private	Solar	86.96
<b>ADANI SEJ2PL M</b>	Rajasthan	Private	Solar	35.01
<b>ADANI SEJ2PL P</b>	Rajasthan	Private	Solar	35.73
<b>ALTRA XERGI</b>	Rajasthan	Private	Solar	91.64
<b>AMP Energy Green Fiv</b>	Rajasthan	Private	Solar	15.56
<b>AMP Energy Green Six</b>	Rajasthan	Private	Solar	30.07
<b>AMPLUS_AGES</b>	Rajasthan	Private	Solar	27.77
<b>ASERJ2PL</b>	Rajasthan	Private	Solar	49.22
<b>ASERJ2PL_INFRM</b>	Rajasthan	Private	Solar	4.46
<b>ASERJ2PL_BHDL</b>	Rajasthan	Private	Solar	31.26
<b>Adani Renewable Energy RJ Limited (RERJL)</b>	Rajasthan	Private	Solar	45.82
<b>Adani Jaisalmer One SEPL Solar</b>	Rajasthan	Private	Solar	99.73
<b>Adani SB Energy Four Pvt. Ltd.( SE4PL(Kilaj Solar))</b>	Rajasthan	Private	Solar	11.88
<b>M/S Adani Solar Energy Four PVT. LTD.L(Adani SEJ5PL)</b>	Rajasthan	Private	Solar	44.00
<b>Adani SB Energy Four Pvt. Ltd. (SERJ1PL)</b>	Rajasthan	Private	Solar	64.25
<b>Adept_ Renewable</b>	Rajasthan	Private	Solar	32.23
<b>Avaada Sunrays Energy Private Limited</b>	Rajasthan	Private	Solar	76.88
<b>Avaada RJHN Private Limited</b>	Rajasthan	Private	Solar	53.78
<b>Avaada Sunce Energy Private Limited</b>	Rajasthan	Private	Solar	77.20
<b>Avaada Sustainable RJ Project Private Ltd.</b>	Rajasthan	Private	Solar	68.85

Station	State/ Region	Sector (Central/State/ Private)	Type	Generation (MU)
Ayana Renewable	Rajasthan	Private	Solar	29.18
Ayana Renewable Power One Private Limited	Rajasthan	Private	Solar	69.44
Azure Power Forty One Private Limited	Rajasthan	Private	Solar	67.86
Azure Power Forty Three Private Ltd	Rajasthan	Private	Solar	137.80
Azure Power India Pvt Ltd	Rajasthan	Private	Solar	37.06
Azure Power Maple Pvt Ltd	Rajasthan	Private	Solar	68.93
Azure Power Thirty Four Private Ltd	Rajasthan	Private	Solar	28.08
Clean Solar Power ( Jodhpur) Pvt Ltd	Rajasthan	Private	Solar	59.29
Clean Solar Power (Bhadla) Pvt Ltd	Rajasthan	Private	Solar	72.12
Eden Renewable Cite Private Limited	Rajasthan	Private	Solar	72.65
GRIAN ENERGY	Rajasthan	Private	Solar	26.22
M/S Adani Solar Energy Jodhpur Two Ltd	Rajasthan	Private	Solar	12.16
MEGA SOILS RENEWABLE PRIVATE LIMITED	Rajasthan	Private	Solar	58.26
Mega Surya Urja Pvt. Ltd	Rajasthan	Private	Solar	56.29
M/S. ONEVOLT Energy Private Limited	Rajasthan	Private	Solar	26.58
Nindan Solar Fatehgar	Rajasthan	Private	Solar	69.95
Renew Solar Energy (Jharkhand Three) Pvt Ltd	Rajasthan	Private	Solar	70.09
Renew Solar Power Pvt Ltd	Rajasthan	Private	Solar	11.58
Renew Solar Power Pvt Ltd. Bikaner	Rajasthan	Private	Solar	56.01
Renew Solar Urja Pvt Ltd	Rajasthan	Private	Solar	68.98
Renew Sun Bright Pvt Ltd	Rajasthan	Private	Solar	69.79
Renew Sun Waves Private Limited	Rajasthan	Private	Solar	70.13
Renew Surya Pratap Infirm	Rajasthan	Private	Solar	0.00
Renew Surya Pratap	Rajasthan	Private	Solar	47.13
Renew Surya Ravi Pvt Ltd	Rajasthan	Private	Solar	67.73
Renew Surya Roshini infirm	Rajasthan	Private	Solar	20.16
Rising Sun Energy	Rajasthan	Private	Solar	45.51
SERENTICA Renewables	Rajasthan	Private	Solar	36.64
Renew Surya Roshni	Rajasthan	Private	Solar	60.48
Renew Surya Vihaan	Rajasthan	Private	Solar	21.43
Renew Surya Ayaan	Rajasthan	Private	Solar	65.72
Tata Power Green Energy Limited	Rajasthan	Private	Solar	48.53
Tata Power Renewable Energy Ltd	Rajasthan	Private	Solar	66.70
TESEPL	Rajasthan	Private	Solar	2.34
Tata Power Saurya 1	Rajasthan	Private	Solar	22.84
TPSL Banderwala	Rajasthan	Private	Solar	49.88
TPSL BKN2 INF	Rajasthan	Private	Solar	7.04

Station	State/ Region	Sector (Central/State/ Private)	Type	Generation (MU)
Thar Surya1 Private Limited	Rajasthan	Private	Solar	70.84
Transition Green Energy	Rajasthan	Private	Solar	23.93
Adani Hybrid Energy Jaisalmer Four Limited	Rajasthan	Private	Wind	126.58
Adani Hybrid Energy Jaisalmer One Limited	Rajasthan	Private	Wind	27.94
Adani Hybrid Energy Jaisalmer Three Limited	Rajasthan	Private	Wind	19.01
Adani Hybrid Energy Jaisalmer Two Limited	Rajasthan	Private	Wind	18.30
Adani Jaisalmer One SEPL Wind	Rajasthan	Private	Wind	33.79
<b>Sub Total(Northern Region)</b>				<b>3890.08</b>
Beempow Energy	Madhya Pradesh	Private	Solar	75.50
Arinsun Solar (Barsaitadesh)	Madhya Pradesh	Private	Solar	47.49
Mahindra Solar (Badwar)	Madhya Pradesh	Private	Solar	47.19
AVAADA_AGAR_RUM	Madhya Pradesh	Private	Solar	42.91
Athena_RUM	Madhya Pradesh	Private	Solar	47.61
Masaya BWSPRA_KNDW	Madhya Pradesh	Private	Solar	57.16
Sherisha Raipur	Chhattisgarh	Private	Solar	8.82
Solapur Solar	Maharashtra	Central	Solar	1.95
AREH4L_PSS1	Gujarat	Private	Solar	258.68
Electro Solaire Private Limited (ESPL RSP Solar)	Gujarat	Private	Solar	47.05
Tata Power Renewable Energy Limited (TPREL RSP Solar)	Gujarat	Private	Solar	23.82
Gujarat Industries Power Company Limited (GIPCL RSP Solar)	Gujarat	Private	Solar	24.64
Powerica Wind	Gujarat	Private	Solar	17.46
NTPC Kawas	Gujarat	Central	Solar	10.73
Gandhar_Solar	Gujarat	Private	Solar	3.89
GSECL RSP	Gujarat	Private	Solar	7.95
RPL_SECI-III	Gujarat	Private	Solar	71.46
AGE25BL_PSS2_KPS1_SI	Gujarat	Private	Solar	90.50
AGE24AL	Gujarat	Private	Solar	13.86
Alfanar	Gujarat	Private	Wind	97.29
AWEK1L WIND (RATADIYA)	Gujarat	Private	Wind	171.84
Adani Wind Energy Kutchh Four Limited (AWEK4L)	Gujarat	Private	Wind	98.47
Adani Wind Energy MP One Private Limited (AWEMP1PL)	Gujarat	Private	Wind	101.86
Green Infra Wind Energy Limited SECI-II (Giwel-II Wind (Vadva))	Gujarat	Private	Wind	78.16
Green Infra Wind Energy Limited SECI-III (Giwel-III Wind (Naranpar))	Gujarat	Private	Wind	91.53
GSECL_PH2	Gujarat	Private	Wind	14.78

Station	State/ Region	Sector (Central/State/ Private)	Type	Generation (MU)
Ostro Kutch Wind Private Limited (OKWPL)	Gujarat	Private	Wind	95.76
Renew Wind Energy (AP2) Private Limited (Ghadsisa)	Gujarat	Private	Wind	91.04
Avikiran Solar India Private Limited (ASIPL), Baranda	Gujarat	Private	Wind	52.86
Apraava Khkrda Jam	Gujarat	Private	Wind	70.72
Netra Kotda	Gujarat	Private	Wind	47.53
Torrent Sidpur Jam	Gujarat	Private	Wind	31.95
SITAC	Gujarat	Private	Wind	114.40
SRIJAN	Gujarat	Private	Wind	44.24
NVWEPL_DAYAPAR_BHJ_W	Gujarat	Private	Wind	100.03
SGEL RSP	Gujarat	Private	Wind	16.21
<b>Sub Total(Western Region)</b>				<b>2217.34</b>
Beetam(Tuticorin)	Tamil Nadu	Private	Wind	45.22
GRTJIPL	Tamil Nadu	Private	Solar	25.19
Mytra	Tamil Nadu	Private	Wind	39.27
Orange	Tamil Nadu	Private	Wind	37.19
Green Infra	Tamil Nadu	Private	Wind	48.34
Hiriyur Ostro	Tamil Nadu	Private	Wind	63.79
Sprng Renewable Energy Pvt Ltd(Pugalur)	Tamil Nadu	Private	Wind	3.72
JSW Renew Energy Two Limited ( Tuticorin)	Tamil Nadu	Private	Wind	44.72
JSW Savlaperi	Tamil Nadu	Private	Wind	17.85
JSW Savlaperi infirm	Tamil Nadu	Private	Wind	5.61
Ettayapuram	Tamil Nadu	Central	Solar	39.54
ARPSPL KOPPAL	Karnataka	Private	Wind	53.50
RSOPL KOPPAL	Karnataka	Private	Wind	43.54
RSOPL KOPPAL Infirm	Karnataka	Private	Wind	10.85
RSRPL KOPPAL	Karnataka	Private	Wind	51.22
Serentica_koppal	Karnataka	Private	Wind	2.60
Ramagundam Floating Solar	Telangana	Central	Solar	20.25
Simhadri Floating Solar	Andhra Pradesh	Central	Solar	4.69
<b>Southern Region</b>				<b>557.09</b>
<b>All India Total</b>				<b>6664.51</b>

Source: - 1.Generation from ISGS projects is prepared from block wise data received from RPCs.

2. Generation of ISGS generating stations is included in respective State in Renewable Energy Generation sheet according to physical location so their generation should not be considered additional generation



**Table 3: Renewable Energy Generation (Excluding Large Hydro) by CPSU Owned stations**

Name of CPSU	Name of State	Installed Capacity (MW)	Source	RE Generation (MU) May 2024	RE Generation (MU) May 2023	RE Generation (MU) April 2024- May 2024	RE Generation (MU) April 2023- May 2023
<b>NTPC</b>							
Faridabad_Solar	Haryana	5	Solar	0.72	0.65	1.27	1.27
Bhadla	Rajasthan	260	Solar	39.65	39.14	75.23	76.66
Jetsar	Rajasthan	160	Solar	32.45	34.90	66.63	69.18
Fatehgarh	Rajasthan	296	Solar	70.48	70.60	135.63	137.64
Devikot	Rajasthan	240	Solar	50.46	52.51	99.15	102.19
Nokhra	Rajasthan	300	Solar	63.94	63.32	125.24	122.94
Anta Solar	Rajasthan	90	Solar	3.51	0.00	3.97	0.00
Dadri_Solar	Uttar Pradesh	5	Solar	0.59	0.63	1.17	1.23
Unchahar_Solar	Uttar Pradesh	10	Solar	1.31	1.43	2.63	2.76
Singrauli_Solar	Uttar Pradesh	15	Solar	2.85	1.56	4.80	3.95
Auraiya	Uttar Pradesh	40	Solar	8.03	7.47	14.55	13.93
Small Hydro Vindhyachal	Uttar Pradesh	8	Small Hydro	3.14	3.87	5.73	7.39
Ayodhya	Uttar Pradesh	14	Solar	0.48	0.00	5.14	0.00
Chattargarh	Rajasthan	150	Solar	33.39	0.00	60.60	0.00
Rojmal	Gujarat	50	Wind	12.75	12.09	19.95	18.92
Dayapar	Gujarat	50	Wind	14.11	0.00	22.09	0.00
Rajgarh_Solar	Madhya Pradesh	50	Solar	7.02	6.91	13.66	13.43
Mandsaur	Madhya Pradesh	250	Solar	36.51	36.96	69.59	71.13
Solapur	Maharashtra	10	Solar	1.95	1.76	3.77	3.40
Anantapuram	Andhra Pradesh	250	Solar	33.98	36.15	70.72	72.40
Ramagundam	Telangana	110	Solar	21.23	20.63	40.00	40.09
Andaman & Nicobar	Andaman & Nicobar	5	Solar	0.46	0.17	1.03	0.74
Talchar_Solar	Orissa	10	Solar	1.08	1.13	2.15	2.27
Solar_Bilhour	Uttar Pradesh	225	Solar	48.25	46.05	96.84	89.96
Simhadri Floating Project	Andhra Pradesh	25	Solar	4.64	4.55	9.34	9.45
Kayamkulam	Kerala	92	Solar	14.13	18.38	33.78	38.41



Name of CPSU	Name of State	Installed Capacity (MW)	Source	RE Generation (MU) May 2024	RE Generation (MU) May 2023	RE Generation (MU) April 2024- May 2024	RE Generation (MU) April 2023- May 2023
Kawas	Gujarat	56	Solar	10.69	10.31	21.40	20.79
Gandhar	Gujarat	20	Solar	4.04	2.86	8.17	5.23
Shambu ki Burj-I	Rajasthan	250	Solar	58.33	57.27	113.03	113.77
Shambu ki Burj-II	Rajasthan	150	Solar	37.45	34.99	73.03	69.18
Ettayapuram	Tamil Nadu	230	Solar	39.85	40.67	84.72	80.77
<b>Total NTPC</b>		<b>3426</b>		<b>657.45</b>	<b>606.96</b>	<b>1285.01</b>	<b>1189.08</b>
<b>THDC</b>							
Patan Wind Power Project	Gujarat	50.00	Wind	9.55	10.96	15.56	16.46
Devbhumi Dwarka Wind Power Project	Gujarat	63.00	Wind	14.57	14.02	23.22	21.79
Solar Kasaragod	Kerala	50.00	Solar	7.24	9.26	16.40	18.93
Rishikesh office Premises	Uttarakhand	0.50	Solar	0.06	0.05	0.10	0.11
Dhukwan SHEP Jhansi,UP	Uttar Pradesh	24.00	Small Hydro	5.23	9.07	5.61	9.07
<b>Total THDC</b>		<b>187.50</b>		<b>36.65</b>	<b>43.36</b>	<b>60.89</b>	<b>66.36</b>
<b>NHPC</b>							
Wind Power Project	Rajasthan	50.00	Wind	4.33	8.02	8.66	13.98
Solar Power Project	Tamilnadu	50.00	Solar	7.84	8.01	15.68	17.03
<b>Total NHPC</b>		<b>100.00</b>		<b>12.17</b>	<b>16.03</b>	<b>24.34</b>	<b>31.02</b>
<b>ONGC</b>							
Bhuj	Gujarat	51.00	Wind	8.98	0.00	13.93	5.02
Jaisalmer	Rajasthan	102.00	Wind	11.61	17.59	18.58	27.20
Assam	Assam	1.66	Roof Top	0.13	0.00	0.27	0.13
Assam	Assam	1.09	Ground Mounted	0.12	0.00	0.24	0.15
Tripura	Tripura	0.25	Roof Top	0.02	0.00	0.04	0.02
Rajahmundry,Base Complex	Andhra Pradesh	1.00	Ground Mounted	0.11	0.60	0.22	0.72
Tati Paka, Rajahmundry	Andhra Pradesh	5.00	Ground Mounted	0.64	0.95	1.37	1.59
Cauvery	Tamil Nadu	0.46	Ground Mounted	0.05	0.00	0.11	0.01
Vagara, Ankleshwar	Gujarat	5.00	Ground Mounted	0.81	0.00	1.59	0.82
Gujarat	Gujarat	4.23	Roof Top	0.30	0.00	0.78	0.00

Name of CPSU	Name of State	Installed Capacity (MW)	Source	RE Generation (MU) May 2024	RE Generation (MU) May 2023	RE Generation (MU) April 2024- May 2024	RE Generation (MU) April 2023- May 2023
Jodhpur	Rajasthan	0.16	Ground Mounted	0.02	0.00	0.04	0.03
Jaisalmer	Rajasthan	0.16	Ground Mounted	0.02	0.00	0.04	0.00
Uttarakhand	Uttarakhand	1.24	Roof Top	0.07	0.00	0.18	0.15
Goa	Goa	1.00	Ground Mounted	0.07	0.00	0.14	0.15
Hazira	Gujarat	10.00	Ground Mounted	1.51	0.03	3.06	1.54
Hazira	Gujarat	5.00	Ground Mounted	0.89	0.00	1.85	0.72
Mumbai ( Uran & NBP Green Heights)	Maharashtra	0.29	Roof Top	0.17	0.11	0.34	0.11
DDU, Bhawan, Delhi	Delhi	0.30	Roof Top	0.04	0.00	0.08	0.04
ONGC Colony Noida	Uttar Pradesh	0.06	Roof Top	0.01	0.00	0.01	0.01
EOA Logistics Park, Kakinada	Andhra Pradesh	1.00	Roof Top	0.09	0.00	0.20	0.48
Cambay	Gujarat	2.00	Ground Mounted SPP	0.28	0.00	0.67	0.00
<b>Total ONGC</b>		<b>192.89</b>		<b>25.95</b>	<b>19.28</b>	<b>43.75</b>	<b>38.89</b>
<b>SJVN Limited</b>							
Khirvire Wind Power	Maharashtra	47.60	Wind	6.12	5.13	8.59	7.16
Sadla Wind Power	Gujarat	50.00	Wind	12.27	13.83	19.48	21.18
Charanka Solar Power	Gujarat	5.60	Solar	0.87	0.87	1.71	1.73
Wadhal Solar Power Project	Himachal Pradesh	1.00	Solar	0.15	0.12	0.28	0.25
Gurhah	Uttar Pradesh	75.00	Solar	15.53	0.00	31.18	0.00
Gujari		50.00	Solar	9.44	0.00	19.17	0.00
Parasan Solar Power	Uttar Pradesh	75.00	Solar	15.72	16.55	31.52	31.92
<b>Total SJVN</b>		<b>304.20</b>		<b>60.08</b>	<b>36.49</b>	<b>111.93</b>	<b>62.23</b>
<b>Oil India Ltd</b>							
Oil India Ltd	Rajasthan	14.00	Solar	2.20	2.34	4.22	4.44
Oil India Ltd	Rajasthan	67.60	Wind	7.89	6.52	12.69	11.62

Name of CPSU	Name of State	Installed Capacity (MW)	Source	RE Generation (MU) May 2024	RE Generation (MU) May 2023	RE Generation (MU) April 2024- May 2024	RE Generation (MU) April 2023- May 2023
Oil India Ltd	Gujarat	43.30	Wind	9.88	10.36	16.65	18.30
Oil India Ltd	Madhya Pradesh	63.20	Wind	11.94	7.36	22.91	18.62
<b>Total Oil India Ltd</b>		<b>188.10</b>		<b>31.91</b>	<b>26.58</b>	<b>56.47</b>	<b>52.98</b>
<b>NEEPCO</b>							
NEEPCO	Tripura	5.00	Solar	0.49	0.54	1.05	0.54
NEEPCO	Assam	25.00	Small Hydro	18.47	0.00	30.41	0.00
<b>NEEPCO Total</b>		<b>30.00</b>		<b>18.96</b>	<b>0.54</b>	<b>31.46</b>	<b>0.54</b>
<b>DVC</b>							
DVC	West Bengal	10.10	Solar	1.72	0.01	3.43	0.01
DVC	Jharkhand	4.00	Small Hydro	0.00	0.00	0.00	0.00
<b>Total DVC</b>		<b>14.10</b>		<b>1.72</b>	<b>0.01</b>	<b>3.43</b>	<b>0.01</b>
<b>All India Total</b>		<b>4442.79</b>		<b>844.88</b>	<b>749.26</b>	<b>1617.27</b>	<b>1441.11</b>

**Note:** 1.Generation of CPSU owned RE generating stations is included in respective State in Renewable Energy Generation Sheet according to physical location so their generation should not be considered additional generation.

**Table 4:- RE Deviation Data for ISGS**

Deviation Settlement Mechanism(DSM) of Renewable Energy (ISGS) project for the Month of May 2024						
Station	Source	Schedule (MU)	Actual(MU)	Deviation (Actual-Schedule) in MU.	% Deviation of Schedule	
<b>Northern Region</b>						
Unchahar Solar	Solar	1.81	1.36	-0.45	-24.93	
Dadri Solar	Solar	0.72	0.62	-0.10	-14.31	
Singrauli Solar	Solar	2.35	1.92	-0.42	-18.03	
Auraiya	Solar	7.22	6.95	-0.28	-3.83	
Kolayat	Solar	95.35	96.03	0.68	0.71	
Nokhra	Solar	64.84	63.66	-1.18	-1.83	
Devikot	Solar	54.69	49.88	-4.81	-8.79	
ABC Renewable Energy	Solar	72.78	71.30	-1.48	-2.04	
Acme Chittorgarh Energy Pvt Ltd.	Solar	58.10	58.58	0.47	0.81	
Acme Heergharh Powertech Pvt Ltd	Solar	71.40	72.37	0.97	1.36	
Adani Hybrid Energy Jaisalmer Four Limited	Solar	323.13	315.06	-8.07	-2.50	
Adani Hybrid Energy Jaisalmer One Limited	Solar	121.60	117.15	-4.45	-3.66	
Adani Hybrid Energy Jaisalmer Three Limited	Solar	108.37	105.47	-2.90	-2.68	
Adani Hybrid Energy Jaisalmer Two Limited	Solar	108.65	105.26	-3.38	-3.11	
ADANI SEJ2PL M	Solar	36.01	35.01	-1.00	-2.77	
ADANI SEJ2PL P	Solar	35.06	35.73	0.67	1.91	
ALTRA XERGI	Solar	91.82	91.64	-0.18	-0.20	
AMP Energy Green Six	Solar	14.01	15.56	1.56	11.13	
AMP Energy Green Six	Solar	30.28	30.07	-0.21	-0.69	
AMPLUS_AGES	Solar	28.18	27.77	-0.41	-1.45	
ASERJ2PL	Solar	48.45	49.22	0.77	1.58	
ASERJ2PL_INFRM	Solar	4.54	4.46	-0.08	-1.83	
ASERJ2PL_BHDL	Solar	32.39	31.26	-1.12	-3.47	
Adani Renewable Energy RJ Limited (RERJL)	Solar	44.74	45.82	1.08	2.41	
Adani Jaisalmer One SEPL Solar	Solar	134.82	133.52	-1.30	-0.96	
Adani SB Energy Four Pvt. Ltd.( SE4PL(Kilaj Solar))	Solar	12.05	11.88	-0.17	-1.40	

**Deviation Settlement Mechanism(DSM) of Renewable Energy (ISGS) project for the Month of May 2024**

Station	Source	Schedule (MU)	Actual(MU)	Deviation (Actual-Schedule) in MU.	% Deviation of Schedule
M/S Adani Solar Energy Four PVT. LTD.L(Adani SEJ5PL)	Solar	44.41	44.00	-0.40	-0.91
Adani SB Energy Four Pvt. Ltd. (SERJ1PL)	Solar	70.79	64.25	-6.54	-9.24
Adept_ Renewable	Solar	33.75	32.23	-1.52	-4.51
Avaada Sunrays Energy Private Limited	Solar	76.57	76.88	0.31	0.40
Avaada RJHN Private Limited	Solar	56.46	53.78	-2.68	-4.74
Avaada Sunce Energy Private Limited	Solar	82.55	77.20	-5.35	-6.48
Avaada Sustainable RJ Project Private Ltd.	Solar	72.10	68.85	-3.25	-4.51
Ayana Renewable	Solar	27.01	29.18	2.17	8.03
Ayana Renewable Power One Private Limited	Solar	72.59	69.44	-3.16	-4.35
Azure Power Forty One Private Limited	Solar	70.21	67.86	-2.35	-3.34
Azure Power Forty Three Private Ltd	Solar	138.78	137.80	-0.98	-0.71
Azure Power India Pvt Ltd	Solar	37.91	37.06	-0.85	-2.23
Azure Power Maple Pvt Ltd	Solar	69.72	68.93	-0.79	-1.13
Azure Power Thirty Four Private Ltd	Solar	27.87	28.08	0.21	0.76
Clean Solar Power ( Jodhpur) Pvt Ltd	Solar	60.76	59.29	-1.48	-2.43
Clean Solar Power (Bhadla) Pvt Ldt	Solar	70.29	72.12	1.83	2.61
Eden Renewable Cite Private Limited	Solar	74.06	72.65	-1.41	-1.90
GRIAN ENERGY	Solar	28.22	26.22	-2.00	-7.08
M/S Adani Solar Energy Jodhpur Two Ltd	Solar	12.76	12.16	-0.60	-4.69
MEGA SOILS RENEWABLE PRIVATE LIMITED	Solar	59.54	58.26	-1.27	-2.14
Mega Surya Urja Pvt. Ltd	Solar	57.91	56.29	-1.62	-2.79
M/S. ONEVOLT Energy Private Limited	Solar	28.18	26.58	-1.59	-5.66
Nindan Solar Fatehgar	Solar	71.30	69.95	-1.35	-1.89
Renew Solar Energy (Jharkhand Three) Pvt Ltd	Solar	72.31	70.09	-2.22	-3.07
Renew Solar Power Pvt Ltd	Solar	12.04	11.58	-0.47	-3.86
Renew Solar Power Pvt Ltd. Bikaner	Solar	57.52	56.01	-1.51	-2.63
Renew Solar Urja Pvt Ltd	Solar	70.34	68.98	-1.36	-1.93
Renew Sun Bright Pvt Ltd	Solar	70.81	69.79	-1.02	-1.44
Renew Sun Waves Private Limited	Solar	72.06	70.13	-1.94	-2.69

Deviation Settlement Mechanism(DSM) of Renewable Energy (ISGS) project for the Month of May 2024

Station	Source	Schedule (MU)	Actual(MU)	Deviation (Actual-Schedule) in MU.	% Deviation of Schedule
Renew Surya Pratap	Solar	47.05	47.13	0.07	0.15
Renew Surya Ravi Pvt Ltd	Solar	67.55	67.73	0.18	0.27
Renew Surya Roshini infirm	Solar	20.35	20.16	-0.18	-0.91
Rising Sun Energy	Solar	46.07	45.51	-0.56	-1.22
SERENTICA Renewables	Solar	37.12	36.64	-0.48	-1.28
Renew Surya Roshni	Solar	61.90	60.48	-1.41	-2.28
Renew Surya Vihaan	Solar	22.24	21.43	-0.81	-3.64
Renew Surya Ayaan	Solar	68.25	65.72	-2.53	-3.71
Tata Power Green Energy Limited	Solar	49.47	48.53	-0.94	-1.90
Tata Power Renewable Energy Ltd	Solar	69.28	66.70	-2.58	-3.72
TESEPL	Solar	2.27	2.34	0.07	3.13
Tata Power Saurya 1	Solar	23.60	22.84	-0.76	-3.23
TPSL Banderwala	Solar	48.24	49.88	1.63	3.38
TPSL BKN2 INF	Solar	8.39	7.04	-1.34	-16.03
Thar Surya1 Private Limited	Solar	69.23	70.84	1.61	2.32
Transition Green Energy	Solar	23.64	23.93	0.29	1.23
<b>Western Region</b>					
Beempow Energy	Solar	76.66	75.50	-1.16	-1.51
Arinsun Solar (Barsaitadesh)	Solar	44.87	47.49	2.62	5.84
Mahindra Solar (Badwar)	Solar	45.43	47.19	1.76	3.87
AVAADA_AGAR_RUM	Solar	44.87	42.91	-1.96	-4.37
Athena_RUM	Solar	48.82	47.61	-1.21	-2.48
Masaya BWSPPRA_KNDW	Solar	57.28	57.16	-0.12	-0.21
Sherisha Raipur	Solar	8.99	8.82	-0.17	-1.89
Solapur Solar	Solar	1.94	1.95	0.01	0.52
AREH4L_PSS1	Solar	249.54	258.68	9.14	3.66
Electro Solaire Private Limited (ESPL RSP Solar)	Solar	46.29	47.05	0.76	1.64
Tata Power Renewable Energy Limited (TPREL RSP Solar)	Solar	23.72	23.82	0.10	0.42
Gujarat Industries Power Company Limited (GIPCL RSP Solar)	Solar	24.31	24.64	0.33	1.36

Deviation Settlement Mechanism(DSM) of Renewable Energy (ISGS) project for the Month of May 2024

Station	Source	Schedule (MU)	Actual(MU)	Deviation (Actual-Schedule) in MU.	% Deviation of Schedule
Powerica Wind	Solar	17.65	17.46	-0.19	-1.08
NTPC Kawas	Solar	10.76	10.73	-0.03	-0.28
Gandhar_Solar	Solar	4.06	3.89	-0.17	-4.19
GSECL RSP	Solar	7.52	7.95	0.43	5.72
RPL_SECI-III	Solar	77.16	71.46	-5.70	-7.39
AGE25BL_PSS2_KPS1_SI	Solar	88.05	90.50	2.45	2.78
AGE24AL	Solar	13.69	13.86	0.17	1.24
Alfanar	Wind	101.52	97.29	-4.23	-4.17
AWEK1L WIND (RATADIYA)	Wind	180.84	171.84	-9.00	-4.98
Adani Wind Energy Kutchh Four Limited (AWEK4L)	Wind	106.77	98.47	-8.30	-7.77
Adani Wind Energy MP One Private Limited (AWEMP1PL)	Wind	105.44	101.86	-3.58	-3.40
Green Infra Wind Energy Limited SECI-II (Giwel-II Wind (Vadva))	Wind	83.38	78.16	-5.22	-6.26
Green Infra Wind Energy Limited SECI-III (Giwel-III Wind (Naranpar))	Wind	97.55	91.53	-6.02	-6.17
GSECL_PH2	Wind	14.36	14.78	0.42	2.92
Ostro Kutch Wind Private Limited (OKWPL)	Wind	100.31	95.76	-4.55	-4.54
Renew Wind Energy (AP2) Private Limited (Ghadsisa)	Wind	98.02	91.04	-6.98	-7.12
Avikiran Solar India Private Limited (ASIPL), Baranda	Wind	55.63	52.86	-2.77	-4.98
Apraava Khkrda Jam	Wind	73.53	70.72	-2.81	-3.82
Netra Kotda	Wind	51.21	47.53	-3.68	-7.19
Torrent Sidpur Jam	Wind	34.36	31.95	-2.41	-7.01
SITAC	Wind	115.65	114.40	-1.25	-1.08
SRIJAN	Wind	45.92	44.24	-1.68	-3.66
NVWEPL_DAYAPAR_BHJ_W	Wind	102.88	100.03	-2.85	-2.77
SGEL RSP	Wind	15.93	16.21	0.28	1.76
<b>Southern Region</b>					
Beetam(Tuticorin)	Wind	53.40	45.22	-8.18	-15.32
GRTJIPL	Solar	25.61	25.19	-0.42	-1.64

Deviation Settlement Mechanism(DSM) of Renewable Energy (ISGS) project for the Month of May 2024

Station	Source	Schedule (MU)	Actual(MU)	Deviation (Actual-Schedule) in MU.	% Deviation of Schedule
Mytra	Wind	50.91	39.27	-11.64	-22.86
Orange	Wind	42.85	37.19	-5.66	-13.21
Green Infra	Wind	57.86	48.34	-9.52	-16.45
Hiriyur Ostro	Wind	74.99	63.79	-11.20	-14.94
Sprng Renewable Energy Pvt Ltd(Pugalur)	Wind	5.50	3.72	-1.78	-32.36
JSW Renew Energy Two Limited ( Tuticorin)	Wind	55.62	44.72	-10.90	-19.60
JSW Savlaperi	Wind	21.75	17.85	-3.90	-17.93
JSW Savlaperi infirm	Wind	5.50	5.61	0.11	2.00
Ettayapuram	Solar	42.48	39.54	-2.94	-6.92
ARPSPL KOPPAL	Wind	64.98	53.50	-11.48	-17.67
RSOPL KOPPAL	Wind	47.37	43.54	-3.83	-8.09
RSOPL KOPPAL Infirm	Wind	10.36	10.85	0.49	4.73
Roshini Renew, Koppal	Wind	59.98	51.22	-8.76	-14.60
Serentica_koppal	Wind	2.36	2.60	0.24	10.17
Ramagundam Floating Solar	Solar	20.01	20.25	0.24	1.20
Simhadri Floating Solar	Solar	4.48	4.69	0.21	4.69

**Source:-** Deviation data for ISGS Projects is prepared from block wise data received from RPCs.



**Table 5:-Fossil and Non-Fossil Generation for the Month of May 2024**

Fossil and Non Fossil (State Wise) Electricity Generation(MU) for the Month of May 2024								
State/UT	Fossil =((1)+(2))		Non Fossil =( (3)+(4)+(5))			Total Non-Fossil (6)=((3)+((4)+(5)))	Grand Total (7)=((1)+(2)+(3)+(4)+(5))	Non Fossil as % of Total Generation
	Thermal (1)	Gas (2)	Nuclear (3)	Large Hydro (4)	Renewable ( Excluding Large Hydro) (5)			
<b>NORTHERN REGION</b>								
Chandigarh	0.00	0.00	0.00	0.00	1.07	1.07	1.07	100.00
Delhi	0.00	753.11	0.00	0.00	73.98	73.98	827.09	8.94
Haryana	2686.68	103.67	0.00	0.00	175.86	175.86	2966.21	5.93
HP	0.00	0.00	0.00	4818.48	327.14	5145.62	5145.62	100.00
J & K	0.00	0.00	0.00	2027.75	52.67	2080.42	2080.42	100.00
Ladakh	0.00	0.00	0.00	41.23	0.00	41.23	41.23	100.00
Punjab	3306.82	0.00	0.00	428.66	282.89	711.55	4018.37	17.71
Rajasthan	5679.03	140.06	604.57	6.40	5329.84	5940.81	11759.90	50.52
Uttar Pradesh	15181.78	321.63	311.72	40.44	536.15	888.31	16391.72	5.42
Uttarakhand	0.00	235.85	0.00	1255.97	77.81	1333.78	1569.63	84.97
<b>Northern Region Total</b>	<b>26854.31</b>	<b>1554.32</b>	<b>916.29</b>	<b>8618.93</b>	<b>6857.41</b>	<b>16392.63</b>	<b>44801.26</b>	<b>36.59</b>
<b>WESTERN REGION</b>								
Chhattisgarh	15328.61	0.00	0.00	8.68	281.58	290.26	15618.87	1.86
Gujarat	8362.01	2002.92	856.85	255.60	4812.82	5925.27	16290.20	36.37
Madhya Pradesh	13476.91	0.00	0.00	587.26	1200.08	1787.34	15264.25	11.71
Maharashtra	12393.05	676.64	805.05	768.79	1596.09	3169.93	16239.62	19.52
Daman and Diu Dadra and Nagar Haveli	0.00	0.00	0.00	0.00	2.74	2.74	2.74	100.00
Goa	0.00	0.00	0.00	0.00	5.44	5.44	5.44	100.00
<b>Western Region Total</b>	<b>49560.58</b>	<b>2679.56</b>	<b>1661.90</b>	<b>1620.33</b>	<b>7898.74</b>	<b>11180.97</b>	<b>63421.11</b>	<b>17.63</b>
<b>SOUTHERN REGION</b>								
Andhra Pradesh	6846.62	19.09	0.00	100.51	1382.00	1482.51	8348.22	17.76

**Fossil and Non Fossil (State Wise) Electricity Generation(MU) for the Month of May 2024**

State/UT	Fossil =((1)+(2))		Non Fossil =( (3)+(4)+(5))			Total Non-Fossil (6)=((3)+((4)+(5))	Grand Total (7)=((1)+(2)+(3)+(4)+(5))	Non Fossil as % of Total Generation
	Thermal (1)	Gas (2)	Nuclear (3)	Large Hydro (4)	Renewable ( Excluding Large Hydro) (5)			
Telangana	5386.61	0.00	0.00	0.00	723.94	723.94	6110.55	11.85
Karnataka	3931.04	0.00	660.69	444.68	2553.21	3658.58	7589.62	48.21
Kerala	0.37	0.00	0.00	513.80	174.53	688.33	688.70	99.95
Tamil Nadu	7030.89	152.51	1208.17	103.21	2548.07	3859.45	11042.85	34.95
Lakshadweep	6.04	0.00	0.00	0.00	0.01	0.01	6.05	0.13
Puducherry	0.00	17.96	0.00	0.00	1.02	1.02	18.98	5.37
<b>Southern Region Total</b>	<b>23201.57</b>	<b>189.56</b>	<b>1868.86</b>	<b>1162.20</b>	<b>7382.79</b>	<b>10413.85</b>	<b>33804.98</b>	<b>30.81</b>
<b>EASTERN REGION</b>								
Andaman Nicobar	34.44	0.00	0.00	0.00	2.22	2.22	36.66	6.06
Bihar	5359.18	0.00	0.00	0.00	24.08	24.08	5383.26	0.45
Jharkhand	3637.55	0.00	0.00	13.65	1.47	15.12	3652.67	0.41
Odisha	5749.18	0.00	0.00	369.44	112.26	481.70	6230.88	7.73
Sikkim	0.00	0.00	0.00	86.57	1.03	87.60	87.60	100.00
West Bengal	7902.68	0.00	0.00	183.87	154.43	338.30	8240.98	4.11
<b>Eastern Region Total</b>	<b>22683.03</b>	<b>0.00</b>	<b>0.00</b>	<b>653.53</b>	<b>295.49</b>	<b>949.02</b>	<b>23632.05</b>	<b>4.02</b>
<b>NORTH-EASTERN REGION</b>								
Arunachal Pradesh	0.00	0.00	0.00	328.94	0.14	329.09	329.09	100.00
Assam	407.14	302.51	0.00	94.73	48.09	142.82	852.47	16.75
Manipur	0.00	0.00	0.00	25.91	0.71	26.62	26.62	100.00
Meghalaya	0.00	0.00	0.00	78.04	8.95	86.99	86.99	100.00
Mizoram	0.00	0.00	0.00	7.21	8.35	15.56	15.56	100.00
Nagaland	0.00	0.00	0.00	5.60	0.37	5.97	5.97	100.00
Tripura	0.00	437.90	0.00	0.00	0.51	0.51	438.41	0.12
<b>North Eastern Region Total</b>	<b>407.14</b>	<b>740.41</b>	<b>0.00</b>	<b>540.43</b>	<b>67.13</b>	<b>607.56</b>	<b>1755.11</b>	<b>34.62</b>
<b>All India Total</b>	<b>122706.63</b>	<b>5163.85</b>	<b>4447.05</b>	<b>12595.42</b>	<b>22501.56</b>	<b>39544.03</b>	<b>167414.51</b>	<b>23.62</b>

**Table 6:-Fossil and Non-Fossil Generation for the period of April 2024- May 2024**

Fossil and Non Fossil (State Wise) Electricity Generation(MU) for the Period of April 2024 - May 2024								
State/UT	Fossil		Non Fossil			Total Non-Fossil (6)=((3)+(4)+(5))	Grand Total (7)=((1)+(2)+(3) + (4)+(5))	Non Fossil as % of Total Generation
	Thermal (1)	Gas (2)	Nuclear (3)	Large Hydro (4)	Renewable (Excluding Large Hydro) (5)			
<b>NORTHERN REGION</b>								
Chandigarh	0.00	0.00	0.00	0.00	2.09	2.09	2.09	100.00
Delhi	0.00	1044.30	0.00	0.00	138.02	138.02	1182.32	11.67
Haryana	5338.84	104.74	0.00	0.00	351.72	351.72	5795.30	6.07
HP	0.00	0.00	0.00	6769.73	548.53	7318.26	7318.26	100.00
J & K	0.00	0.00	0.00	3473.76	106.89	3580.65	3580.65	100.00
Ladakh	0.00	0.00	0.00	56.12	0.00	56.12	56.12	100.00
Punjab	6248.90	0.00	0.00	649.32	604.50	1253.82	7502.72	16.71
Rajasthan	11238.59	231.59	1114.01	20.42	9838.22	10972.65	22442.83	48.89
Uttar Pradesh	29035.16	528.79	621.38	58.02	1225.09	1904.49	31468.44	6.05
Uttarakhand	0.00	493.50	0.00	1979.98	155.62	2135.60	2629.10	81.23
<b>Northern Region Total</b>	<b>51861.49</b>	<b>2402.92</b>	<b>1735.39</b>	<b>13007.35</b>	<b>12970.68</b>	<b>27713.42</b>	<b>81977.83</b>	<b>33.81</b>
<b>WESTERN REGION</b>								
Chhattisgarh	29855.13	0.00	0.00	49.57	512.77	562.34	30417.47	1.85
Gujarat	16505.43	3429.11	1841.23	444.36	8339.68	10625.27	30559.81	34.77
Madhya Pradesh	26695.01	0.00	0.00	984.25	2180.83	3165.08	29860.09	10.60
Maharashtra	24763.61	1209.44	1582.38	1306.00	2994.99	5883.37	31856.42	18.47
Daman and Diu Dadra and Nagar Haveli	0.00	0.00	0.00	0.00	5.43	5.43	5.43	100.00
Goa	0.00	0.00	0.00	0.00	10.87	10.87	10.87	100.00
<b>Western Region Total</b>	<b>97819.18</b>	<b>4638.55</b>	<b>3423.61</b>	<b>2784.18</b>	<b>14044.56</b>	<b>20252.35</b>	<b>122710.08</b>	<b>16.50</b>
<b>SOUTHERN REGION</b>								
Andhra Pradesh	13712.22	30.97	0.00	253.63	2631.63	2885.26	16628.45	17.35
Telangana	10629.23	0.00	0.00	9.00	1410.97	1419.97	12049.20	11.78
Karnataka	8417.46	0.00	1308.83	1125.17	4624.29	7058.29	15475.75	45.61
Kerala	1.53	0.00	0.00	1053.08	403.60	1456.68	1458.21	99.90

**Fossil and Non Fossil (State Wise) Electricity Generation(MU) for the Period of April 2024 - May 2024**

State/UT	Fossil		Non Fossil			Total Non-Fossil (6)=((3)+(4)+(5))	Grand Total (7)=((1)+(2)+(3) + (4)+(5))	Non Fossil as % of Total Generation
	Thermal (1)	Gas (2)	Nuclear (3)	Large Hydro (4)	Renewable (Excluding Large Hydro) (5)			
Tamil Nadu	14206.81	306.99	2422.83	274.22	4347.29	7044.34	21558.14	32.68
Lakshadweep	6.04	6.81	0.00	0.00	0.02	0.02	12.87	0.12
Puducherry	0.00	34.85	0.00	0.00	2.04	2.04	36.89	5.53
<b>Southern Region Total</b>	<b>46973.29</b>	<b>379.62</b>	<b>3731.66</b>	<b>2715.10</b>	<b>13419.83</b>	<b>19866.59</b>	<b>67219.50</b>	<b>29.55</b>
<b>EASTERN REGION</b>								
Andaman Nicobar	68.78	0.00	0.00	0.00	6.11	6.11	74.89	8.16
Bihar	10810.40	0.00	0.00	0.00	48.02	48.02	10858.42	0.44
Jharkhand	7108.36	0.00	0.00	22.03	2.94	24.97	7133.33	0.35
Odisha	11361.07	0.00	0.00	807.42	212.38	1019.80	12380.87	8.24
Sikkim	0.00	0.00	0.00	160.78	2.06	162.84	162.84	100.00
West Bengal	15787.24	0.00	0.00	340.64	304.14	644.78	16432.02	3.92
<b>Eastern Region Total</b>	<b>45135.85</b>	<b>0.00</b>	<b>0.00</b>	<b>1330.87</b>	<b>575.65</b>	<b>1906.52</b>	<b>47042.37</b>	<b>4.05</b>
<b>NORTH-EASTERN REGION</b>								
Arunachal Pradesh	0.00	0.00	0.00	566.27	0.28	566.55	566.55	100.00
Assam	871.20	601.73	0.00	120.84	90.11	210.95	1683.88	12.53
Manipur	0.00	0.00	0.00	43.31	1.43	44.74	44.74	100.00
Meghalaya	0.00	0.00	0.00	115.40	12.77	128.17	128.17	100.00
Mizoram	0.00	0.00	0.00	11.25	16.69	27.94	27.94	100.00
Nagaland	0.00	0.00	0.00	9.99	3.85	13.84	13.84	100.00
Tripura	0.00	868.18	0.00	0.00	1.07	1.07	869.25	0.12
<b>North Eastern Region Total</b>	<b>871.20</b>	<b>1469.91</b>	<b>0.00</b>	<b>867.06</b>	<b>126.20</b>	<b>993.26</b>	<b>3334.37</b>	<b>29.79</b>
<b>All India Total</b>	<b>242661.01</b>	<b>8891.00</b>	<b>8890.66</b>	<b>20704.56</b>	<b>41136.92</b>	<b>70732.14</b>	<b>322284.15</b>	<b>21.95</b>

**Table 7:- Renewable Energy as % of Total Electricity Generated**

Renewable Energy (State Wise) Generation(MU) for the Month of May 2024								
State/UT	Fossil		Non Fossil			Total Renewable (RE) (6)=((4)+(5))	Grand Total (7)=((1)+(2)+(3)+(4)+(5))	RE as % of Total
	Thermal (1)	Gas (2)	Nuclear (3)	Large Hydro (4)	Renewable ( Excluding Large Hydro) (5)			
<b>NORTHERN REGION</b>								
Chandigarh	0.00	0.00	0.00	0.00	1.07	1.07	1.07	100.00
Delhi	0.00	753.11	0.00	0.00	73.98	73.98	827.09	8.94
Haryana	2686.68	103.67	0.00	0.00	175.86	175.86	2966.21	5.93
HP	0.00	0.00	0.00	4818.48	327.14	5145.62	5145.62	100.00
J & K	0.00	0.00	0.00	2027.75	52.67	2080.42	2080.42	100.00
Ladakh	0.00	0.00	0.00	41.23	0.00	41.23	41.23	100.00
Punjab	3306.82	0.00	0.00	428.66	282.89	711.55	4018.37	17.71
Rajasthan	5679.03	140.06	604.57	6.40	5329.84	5336.24	11759.90	45.38
Uttar Pradesh	15181.78	321.63	311.72	40.44	536.15	576.59	16391.72	3.52
Uttarakhand	0.00	235.85	0.00	1255.97	77.81	1333.78	1569.63	84.97
<b>Northern Region Total</b>	<b>26854.31</b>	<b>1554.32</b>	<b>916.29</b>	<b>8618.93</b>	<b>6857.41</b>	<b>15476.34</b>	<b>44801.26</b>	<b>34.54</b>
<b>WESTERN REGION</b>								
Chhattisgarh	15328.61	0.00	0.00	8.68	281.58	290.26	15618.87	1.86
Gujarat	8362.01	2002.92	856.85	255.60	4812.82	5068.42	16290.20	31.11
Madhya Pradesh	13476.91	0.00	0.00	587.26	1200.08	1787.34	15264.25	11.71
Maharashtra	12393.05	676.64	805.05	768.79	1596.09	2364.88	16239.62	14.56
Daman and Diu Dadra and Nagar Haveli	0.00	0.00	0.00	0.00	2.74	2.74	2.74	100.00
Goa	0.00	0.00	0.00	0.00	5.44	5.44	5.44	100.00
<b>Western Region Total</b>	<b>49560.58</b>	<b>2679.56</b>	<b>1661.90</b>	<b>1620.33</b>	<b>7898.74</b>	<b>9519.07</b>	<b>63421.11</b>	<b>15.01</b>
<b>SOUTHERN REGION</b>								
Andhra Pradesh	6846.62	19.09	0.00	100.51	1382.00	1482.51	8348.22	17.76
Telangana	5386.61	0.00	0.00	0.00	723.94	723.94	6110.55	11.85
Karnataka	3931.04	0.00	660.69	444.68	2553.21	2997.89	7589.62	39.50

### Renewable Energy (State Wise) Generation(MU) for the Month of May 2024

State/UT	Fossil		Non Fossil			Total Renewable (RE) (6)=((4)+(5))	Grand Total (7)=((1)+(2)+(3)+(4)+(5))	RE as % of Total
	Thermal (1)	Gas (2)	Nuclear (3)	Large Hydro (4)	Renewable ( Excluding Large Hydro) (5)			
Kerala	0.37	0.00	0.00	513.80	174.53	688.33	688.70	99.95
Tamil Nadu	7030.89	152.51	1208.17	103.21	2548.07	2651.28	11042.85	24.01
Lakshadweep	6.04	0.00	0.00	0.00	0.01	0.01	6.05	0.13
Puducherry	0.00	17.96	0.00	0.00	1.02	1.02	18.98	5.37
<b>Southern Region Total</b>	<b>23201.57</b>	<b>189.56</b>	<b>1868.86</b>	<b>1162.20</b>	<b>7382.79</b>	<b>8544.99</b>	<b>33804.98</b>	<b>25.28</b>
<b>EASTERN REGION</b>								
Andaman Nicobar	34.44	0.00	0.00	0.00	2.22	2.22	36.66	6.06
Bihar	5359.18	0.00	0.00	0.00	24.08	24.08	5383.26	0.45
Jharkhand	3637.55	0.00	0.00	13.65	1.47	15.12	3652.67	0.41
Odisha	5749.18	0.00	0.00	369.44	112.26	481.70	6230.88	7.73
Sikkim	0.00	0.00	0.00	86.57	1.03	87.60	87.60	100.00
West Bengal	7902.68	0.00	0.00	183.87	154.43	338.30	8240.98	4.11
<b>Eastern Region Total</b>	<b>22683.03</b>	<b>0.00</b>	<b>0.00</b>	<b>653.53</b>	<b>295.49</b>	<b>949.02</b>	<b>23632.05</b>	<b>4.02</b>
<b>NORTH-EASTERN REGION</b>								
Arunachal Pradesh	0.00	0.00	0.00	328.94	0.14	329.09	329.09	100.00
Assam	407.14	302.51	0.00	94.73	48.09	142.82	852.47	16.75
Manipur	0.00	0.00	0.00	25.91	0.71	26.62	26.62	100.00
Meghalaya	0.00	0.00	0.00	78.04	8.95	86.99	86.99	100.00
Mizoram	0.00	0.00	0.00	7.21	8.35	15.56	15.56	100.00
Nagaland	0.00	0.00	0.00	5.60	0.37	5.97	5.97	100.00
Tripura	0.00	437.90	0.00	0.00	0.51	0.51	438.41	0.12
<b>North Eastern Region Total</b>	<b>407.14</b>	<b>740.41</b>	<b>0.00</b>	<b>540.43</b>	<b>67.13</b>	<b>607.56</b>	<b>1755.11</b>	<b>34.62</b>
<b>All India Total</b>	<b>122706.63</b>	<b>5163.85</b>	<b>4447.05</b>	<b>12595.42</b>	<b>22501.56</b>	<b>35096.98</b>	<b>167414.51</b>	<b>20.96</b>

**Table 8:- Cumulative Renewable Energy as % of Total Electricity Generated**

Renewable Energy (State Wise Generation (MU) for the Period of April 2024- May 2024								
State/UT	Fossil		Non Fossil			Total Renewable (RE) (6)=((4)+(5))	Grand Total (7)=((1)+(2)+(3)+(4)+(5))	RE as % of Total
	Thermal (1)	Gas (2)	Nuclear (3)	Large Hydro (4)	Renewable ( Excluding Large Hydro) (5)			
<b>NORTHERN REGION</b>								
Chandigarh	0.00	0.00	0.00	0.00	2.09	2.09	2.09	100.00
Delhi	0.00	1044.30	0.00	0.00	138.02	138.02	1182.32	11.67
Haryana	5338.84	104.74	0.00	0.00	351.72	351.72	5795.30	6.07
HP	0.00	0.00	0.00	6769.73	548.53	7318.26	7318.26	100.00
J & K	0.00	0.00	0.00	3473.76	106.89	3580.65	3580.65	100.00
Ladakh	0.00	0.00	0.00	56.12	0.00	56.12	56.12	100.00
Punjab	6248.90	0.00	0.00	649.32	604.50	1253.82	7502.72	16.71
Rajasthan	11238.59	231.59	1114.01	20.42	9838.22	9858.64	22442.83	43.93
Uttar Pradesh	29035.16	528.79	621.38	58.02	1225.09	1283.11	31468.44	4.08
Uttarakhand	0.00	493.50	0.00	1979.98	155.62	2135.60	2629.10	81.23
<b>Northern Region Total</b>	<b>51861.49</b>	<b>2402.92</b>	<b>1735.39</b>	<b>13007.35</b>	<b>12970.68</b>	<b>25978.03</b>	<b>81977.83</b>	<b>31.69</b>
<b>WESTERN REGION</b>								
Chhattisgarh	29855.13	0.00	0.00	49.57	512.77	562.34	30417.47	1.85
Gujarat	16505.43	3429.11	1841.23	444.36	8339.68	8784.04	30559.81	28.74
Madhya Pradesh	26695.01	0.00	0.00	984.25	2180.83	3165.08	29860.09	10.60
Maharashtra	24763.61	1209.44	1582.38	1306.00	2994.99	4300.99	31856.42	13.50
Daman and Diu Dadra and Nagar Haveli	0.00	0.00	0.00	0.00	5.43	5.43	5.43	100.00
Goa	0.00	0.00	0.00	0.00	10.87	10.87	10.87	100.00
<b>Western Region Total</b>	<b>97819.18</b>	<b>4638.55</b>	<b>3423.61</b>	<b>2784.18</b>	<b>14044.56</b>	<b>16828.74</b>	<b>122710.08</b>	<b>13.71</b>
<b>SOUTHERN REGION</b>								
Andhra Pradesh	13712.22	30.97	0.00	253.63	2631.63	2885.26	16628.45	17.35
Telangana	10629.23	0.00	0.00	9.00	1410.97	1419.97	12049.20	11.78
Karnataka	8417.46	0.00	1308.83	1125.17	4624.29	5749.46	15475.75	37.15

Renewable Energy (State Wise Generation (MU) for the Period of April 2024- May 2024								
State/UT	Fossil		Non Fossil			Total Renewable (RE) (6)=((4)+(5))	Grand Total (7)=((1)+(2)+(3)+(4)+(5))	RE as % of Total
	Thermal (1)	Gas (2)	Nuclear (3)	Large Hydro (4)	Renewable ( Excluding Large Hydro) (5)			
Kerala	1.53	0.00	0.00	1053.08	403.60	1456.68	1458.21	99.90
Tamil Nadu	14206.81	306.99	2422.83	274.22	4347.29	4621.51	21558.14	21.44
Lakshadweep	6.04	6.81	0.00	0.00	0.02	0.02	12.87	0.12
Puducherry	0.00	34.85	0.00	0.00	2.04	2.04	36.89	5.53
<b>Southern Region Total</b>	<b>46973.29</b>	<b>379.62</b>	<b>3731.66</b>	<b>2715.10</b>	<b>13419.83</b>	<b>16134.93</b>	<b>67219.50</b>	<b>24.00</b>
<b>EASTERN REGION</b>								
Andaman Nicobar	68.78	0.00	0.00	0.00	6.11	6.11	74.89	8.16
Bihar	10810.40	0.00	0.00	0.00	48.02	48.02	10858.42	0.44
Jharkhand	7108.36	0.00	0.00	22.03	2.94	24.97	7133.33	0.35
Odisha	11361.07	0.00	0.00	807.42	212.38	1019.80	12380.87	8.24
Sikkim	0.00	0.00	0.00	160.78	2.06	162.84	162.84	100.00
West Bengal	15787.24	0.00	0.00	340.64	304.14	644.78	16432.02	3.92
<b>Eastern Region Total</b>	<b>45135.85</b>	<b>0.00</b>	<b>0.00</b>	<b>1330.87</b>	<b>575.65</b>	<b>1906.52</b>	<b>47042.37</b>	<b>4.05</b>
<b>NORTH-EASTERN REGION</b>								
Arunachal Pradesh	0.00	0.00	0.00	566.27	0.28	566.55	566.55	100.00
Assam	871.20	601.73	0.00	120.84	90.11	210.95	1683.88	12.53
Manipur	0.00	0.00	0.00	43.31	1.43	44.74	44.74	100.00
Meghalaya	0.00	0.00	0.00	115.40	12.77	128.17	128.17	100.00
Mizoram	0.00	0.00	0.00	11.25	16.69	27.94	27.94	100.00
Nagaland	0.00	0.00	0.00	9.99	3.85	13.84	13.84	100.00
Tripura	0.00	868.18	0.00	0.00	1.07	1.07	869.25	0.12
<b>North Eastern Region Total</b>	<b>871.20</b>	<b>1469.91</b>	<b>0.00</b>	<b>867.06</b>	<b>126.20</b>	<b>993.26</b>	<b>3334.37</b>	<b>29.79</b>
<b>All India Total</b>	<b>242661.01</b>	<b>8891.00</b>	<b>8890.66</b>	<b>20704.56</b>	<b>41136.92</b>	<b>61841.48</b>	<b>322284.15</b>	<b>19.19</b>



**Table 9: Monthly Source wise RE generation May -2024 and May -2023**

RE generation( MUs) data ( source wise) for the month of May -2024 and May -2023														
Name of State/UT	Wind		Solar		Biomass		Bagasse		Small Hydro		Others (Waste to Energy )		Large Hydro	
	May'24	May'23	May'24	May'23	May'24	May'23	May'24	May'23	May'24	May'23	May'24	May'23	May'24	May'23
<b>NORTHERN REGION</b>														
Chandigarh	0.00	0.00	1.07	0.75	0.00	0.00	0.00	0.00	0.00	0.00	0.00	0.00	0.00	0.00
Delhi	0.00	0.00	17.21	17.21	0.00	0.00	0.00	0.00	0.00	0.00	56.77	32.09	0.00	0.00
Haryana	0.00	0.00	118.98	57.14	28.83	24.27	8.92	25.62	13.72	6.36	5.41	5.13	0.00	0.00
Himachal Pradesh	0.00	0.00	8.46	5.71	0.00	0.00	0.00	0.00	318.68	291.61	0.00	0.00	4818.48	2997.68
J & K	0.00	0.00	0.00	0.00	0.00	0.00	0.00	0.00	52.67	61.02	0.00	0.00	2027.75	2032.89
Ladakh	0.00	0.00	0.00	0.00	0.00	0.00	0.00	0.00	0.00	0.00	0.00	0.00	41.23	20.16
Punjab	0.00	0.00	136.17	351.81	54.65	51.51	19.62	13.72	72.45	56.38	0.00	0.00	428.66	319.63
Rajasthan	785.96	881.21	4511.61	3499.54	32.24	30.63	0.00	0.00	0.04	0.00	0.00	0.00	6.40	3.11
Uttar Pradesh	0.00	0.00	476.76	414.58	0.70	3.70	40.88	155.57	14.37	13.36	3.44	20.06	40.44	28.91
Uttarakhand	0.00	0.00	27.65	27.65	0.00	0.00	20.71	20.71	29.45	29.45	0.00	0.00	1255.97	964.72
<b>Northern Region</b>	<b>785.96</b>	<b>881.21</b>	<b>5297.91</b>	<b>4374.39</b>	<b>116.41</b>	<b>110.11</b>	<b>90.13</b>	<b>215.62</b>	<b>501.39</b>	<b>458.18</b>	<b>65.62</b>	<b>57.28</b>	<b>8618.93</b>	<b>6367.10</b>
<b>WESTERN REGION</b>														
Chhattisgarh	0.00	0.00	153.53	40.36	124.56	144.66	1.04	2.42	2.45	2.83	0.00	0.00	8.68	11.71
Gujarat	3042.17	3649.99	1752.88	1428.45	2.52	0.00	0.00	0.00	15.25	15.79	0.00	0.00	255.60	112.23
Madhya Pradesh	596.75	506.69	548.09	365.63	5.97	7.93	14.27	0.00	29.19	28.66	5.81	2.51	587.26	227.90
Maharashtra	779.44	656.56	632.33	566.13	25.39	28.05	107.90	98.05	42.89	49.47	8.14	0.00	768.79	832.58
Dadra and Nagar Haveli and Daman and Diu	0.00	0.00	0.00	0.00	0.00	0.00	0.00	0.00	0.00	0.00	0.00	0.00	0.00	0.00
Goa	0.00	0.00	4.76	6.29	0.00	0.00	0.00	0.00	0.00	0.00	0.68	0.70	0.00	0.00

**RE generation( MUs) data ( source wise) for the month of May -2024 and May -2023**

Name of State/UT	Wind		Solar		Biomass		Bagasse		Small Hydro		Others (Waste to Energy )		Large Hydro	
	May'24	May'23	May'24	May'23	May'24	May'23	May'24	May'23	May'24	May'23	May'24	May'23	May'24	May'23
<b>Western Region</b>	<b>4418.36</b>	<b>4813.25</b>	<b>3093.28</b>	<b>2408.47</b>	<b>159.49</b>	<b>181.70</b>	<b>123.21</b>	<b>100.47</b>	<b>89.77</b>	<b>96.74</b>	<b>14.63</b>	<b>3.20</b>	<b>1620.33</b>	<b>1184.42</b>
<b>SOUTHERN REGION</b>														
<b>Andhra Pradesh</b>	613.32	524.25	738.30	768.36	0.88	1.00	1.10	0.59	0.07	13.97	28.33	23.96	100.51	125.93
<b>Telangana</b>	22.10	17.58	680.23	662.08	0.57	0.29	0.00	0.00	1.01	2.75	20.04	11.76	0.00	54.68
<b>Karnataka</b>	1064.66	739.07	1385.87	1401.19	0.77	7.89	66.54	134.96	35.37	53.63	0.00	0.00	444.68	921.46
<b>Kerala</b>	9.67	11.18	124.19	101.00	0.00	0.00	6.48	7.10	34.19	42.04	0.00	0.00	513.80	677.75
<b>Tamil Nadu</b>	1343.56	1131.09	1163.64	922.32	8.94	8.41	29.60	68.13	2.32	3.75	0.00	0.00	103.21	231.43
<b>Lakshadweep</b>	0.00	0.00	0.01	0.01	0.00	0.00	0.00	0.00	0.00	0.00	0.00	0.00	0.00	0.00
<b>Puducherry</b>	0.00	0.00	1.02	1.02	0.00	0.00	0.00	0.00	0.00	0.00	0.00	0.00	0.00	0.00
<b>Southern Region</b>	<b>3053.31</b>	<b>2423.17</b>	<b>4093.26</b>	<b>3855.97</b>	<b>11.16</b>	<b>17.59</b>	<b>103.73</b>	<b>210.78</b>	<b>72.96</b>	<b>116.14</b>	<b>48.37</b>	<b>35.72</b>	<b>1162.20</b>	<b>2011.25</b>
<b>EASTERN REGION</b>														
<b>Andaman Nicobar</b>	0.00	0.00	2.09	2.86	0.00	0.00	0.00	0.00	0.13	0.10	0.00	0.00	0.00	0.00
<b>Bihar</b>	0.00	0.00	24.08	16.37	0.00	0.00	0.00	11.89	0.00	0.00	0.00	0.00	0.00	0.00
<b>Jharkhand</b>	0.00	0.00	1.47	1.47	0.00	0.00	0.00	0.00	0.00	0.00	0.00	0.00	13.65	3.92
<b>Odisha</b>	0.00	0.00	80.95	74.11	8.09	7.64	0.00	0.00	23.22	19.32	0.00	0.00	369.44	401.68
<b>Sikkim</b>	0.00	0.00	0.00	0.00	0.00	0.00	0.00	0.00	1.03	1.03	0.00	0.00	86.57	916.27
<b>West Bengal</b>	0.00	0.00	24.01	13.31	0.00	0.00	0.00	0.00	7.55	17.36	122.87	139.70	183.87	237.78
<b>Eastern Region</b>	<b>0.00</b>	<b>0.00</b>	<b>132.60</b>	<b>108.13</b>	<b>8.09</b>	<b>7.64</b>	<b>0.00</b>	<b>11.89</b>	<b>31.92</b>	<b>37.81</b>	<b>122.87</b>	<b>139.70</b>	<b>653.53</b>	<b>1559.65</b>

**RE generation( MUs) data ( source wise) for the month of May -2024 and May -2023**

Name of State/UT	Wind		Solar		Biomass		Bagasse		Small Hydro		Others (Waste to Energy )		Large Hydro	
	May'24	May'23	May'24	May'23	May'24	May'23	May'24	May'23	May'24	May'23	May'24	May'23	May'24	May'23
<b>NORTH-EASTERN REGION</b>														
<b>Arunachal Pradesh</b>	0.00	0.00	0.10	0.20	0.00	0.00	0.00	0.00	0.05	0.05	0.00	0.00	328.94	263.53
<b>Assam</b>	0.00	0.00	27.27	27.51	0.00	0.00	0.00	0.00	20.75	2.65	0.07	0.00	94.73	19.06
<b>Manipur</b>	0.00	0.00	0.71	0.67	0.00	0.00	0.00	0.00	0.00	0.00	0.00	0.62	25.91	5.66
<b>Megh alaya</b>	0.00	0.00	0.00	0.00	0.00	0.00	0.00	0.00	8.95	3.94	0.00	0.00	78.04	44.24
<b>Mizoram</b>	0.00	0.00	0.35	0.27	0.00	0.00	0.00	0.00	7.99	7.99	0.00	0.00	7.21	2.04
<b>Nagaland</b>	0.00	0.00	0.00	0.00	0.00	0.00	0.00	0.00	0.37	3.82	0.00	0.00	5.60	1.74
<b>Tripura</b>	0.00	0.00	0.51	0.54	0.00	0.00	0.00	0.00	0.00	0.00	0.00	0.00	0.00	0.00
<b>North Eastern Region</b>	<b>0.00</b>	<b>0.00</b>	<b>28.94</b>	<b>29.13</b>	<b>0.00</b>	<b>0.00</b>	<b>0.00</b>	<b>0.00</b>	<b>38.12</b>	<b>18.46</b>	<b>0.07</b>	<b>0.62</b>	<b>540.43</b>	<b>336.26</b>
<b>All India Total</b>	<b>8257.63</b>	<b>8117.63</b>	<b>12645.99</b>	<b>10776.14</b>	<b>295.16</b>	<b>317.04</b>	<b>317.07</b>	<b>538.75</b>	<b>734.16</b>	<b>727.33</b>	<b>251.56</b>	<b>236.53</b>	<b>12595.42</b>	<b>11458.68</b>

**Table 10: Cumulative Source wise RE generation April 2024-May 2024 and April 2023-May 2023**

RE generation( MUs) data ( source wise) for the period of April 2024 -May 2024 and April 2023 -May 2023

Name of State/UT	Wind		Solar		Biomass		Bagasse		Small Hydro		Others (Waste to Energy)		Large Hydro	
	Apr'24-May'24	Apr'23-May'23	Apr'24-May'24	Apr'23-May'23	Apr'24-May'24	Apr'23-May'23	Apr'24-May'24	Apr'23-May'23	Apr'24-May'24	Apr'23-May'23	Apr'24-May'24	Apr'23-May'23	Apr'24-May'24	Apr'23-May'23
<b>NORTHERN REGION</b>														
Chandigarh	0.00	0.00	2.09	2.95	0.00	0.00	0.00	0.00	0.00	0.00	0.00	0.00	0.00	0.00
Delhi	0.00	0.00	34.42	34.42	0.00	0.00	0.00	0.00	0.00	0.00	103.60	75.84	0.00	0.00
Haryana	0.00	0.00	237.96	114.28	57.66	48.54	17.84	51.24	27.44	12.72	10.82	10.26	0.00	0.00
Himachal Pradesh	0.00	0.00	14.62	10.82	0.00	0.00	0.00	0.00	533.91	473.05	0.00	0.00	6769.73	4830.43
J & K	0.00	0.00	0.00	0.00	0.00	0.00	0.00	0.00	106.89	100.98	0.00	0.00	3473.76	3531.31
Ladakh	0.00	0.00	0.00	0.00	0.00	0.00	0.00	0.00	0.00	0.00	0.00	0.00	56.12	35.77
Punjab	0.00	0.00	263.71	690.46	115.69	104.55	116.96	40.62	108.14	92.63	0.00	0.00	649.32	537.09
Rajasthan	1301.90	1557.77	8467.70	6894.73	68.24	61.97	0.00	0.00	0.38	0.00	0.00	0.00	20.42	6.24
Uttar Pradesh	0.00	0.00	942.77	791.41	6.10	9.37	251.79	534.22	17.60	20.76	6.83	26.76	58.02	53.94
Uttarakhand	0.00	0.00	55.30	55.30	0.00	0.00	41.42	41.42	58.90	58.90	0.00	0.00	1979.98	1664.47
<b>Northern Region</b>	<b>1301.90</b>	<b>1557.77</b>	<b>10018.57</b>	<b>8594.36</b>	<b>247.69</b>	<b>224.43</b>	<b>428.01</b>	<b>667.49</b>	<b>853.26</b>	<b>759.04</b>	<b>121.25</b>	<b>112.85</b>	<b>13007.35</b>	<b>10659.25</b>
<b>WESTERN REGION</b>														
Chhattisgarh	0.00	0.00	290.36	112.46	215.93	264.06	3.35	4.33	3.13	8.79	0.00	0.00	49.57	34.03
Gujarat	4974.52	5128.24	3327.29	2575.97	2.52	0.00	0.00	0.00	35.35	35.46	0.00	0.00	444.36	266.76
Madhya Pradesh	1036.52	948.94	1030.28	692.79	13.46	16.90	27.88	9.93	61.61	56.86	11.07	5.31	984.25	382.69
Maharashtra	1227.83	1044.08	1231.29	1068.62	51.20	53.98	351.95	297.43	116.13	119.41	16.59	0.01	1306.00	1481.01
Dadra and Nagar Haveli and Daman and Diu	0.00	0.00	3.48	3.23	1.94	1.86	0.00	0.00	0.00	0.00	0.00	0.00	0.00	0.00
Goa	0.00	0.00	9.52	7.80	0.00	0.00	0.00	0.00	0.00	0.00	1.36	1.12	0.00	0.00
<b>Western Region</b>	<b>7238.87</b>	<b>7121.26</b>	<b>5892.22</b>	<b>4460.87</b>	<b>285.05</b>	<b>336.80</b>	<b>383.18</b>	<b>311.70</b>	<b>216.22</b>	<b>220.53</b>	<b>29.02</b>	<b>6.44</b>	<b>2784.18</b>	<b>2164.49</b>

RE generation( MUs) data ( source wise) for the period of April 2024 -May 2024 and April 2023 -May 2023

Name of State/UT	Wind		Solar		Biomass		Bagasse		Small Hydro		Others (Waste to Energy)		Large Hydro	
	Apr'24-May'24	Apr'23-May'23	Apr'24-May'24	Apr'23-May'23	Apr'24-May'24	Apr'23-May'23	Apr'24-May'24	Apr'23-May'23	Apr'24-May'24	Apr'23-May'23	Apr'24-May'24	Apr'23-May'23	Apr'24-May'24	Apr'23-May'23
<b>SOUTHERN REGION</b>														
Andhra Pradesh	1036.05	890.08	1529.84	1568.55	2.40	5.20	2.96	6.38	4.95	26.96	55.43	49.35	253.63	242.88
Telangana	42.25	36.69	1324.85	1296.46	0.62	0.33	0.00	11.43	1.69	5.56	41.56	23.36	9.00	106.60
Karnataka	1570.42	1235.80	2822.75	2806.69	1.41	13.27	186.03	359.39	43.68	100.71	0.00	0.00	1125.17	2004.77
Kerala	14.56	15.33	306.12	204.13	0.00	0.00	13.67	14.22	69.23	78.46	0.01	0.00	1053.08	1243.44
Tamil Nadu	1782.83	1509.89	2454.73	1892.50	21.03	18.97	82.67	144.68	6.03	12.03	0.00	0.00	274.22	477.38
Lakshadweep	0.00	0.00	0.02	0.02	0.00	0.00	0.00	0.00	0.00	0.00	0.00	0.00	0.00	0.00
Puducherry	0.00	0.00	2.04	2.04	0.00	0.00	0.00	0.00	0.00	0.00	0.00	0.00	0.00	0.00
<b>Southern Region</b>	<b>4446.11</b>	<b>3687.80</b>	<b>8440.35</b>	<b>7770.38</b>	<b>25.46</b>	<b>37.77</b>	<b>285.34</b>	<b>536.09</b>	<b>125.58</b>	<b>223.73</b>	<b>96.99</b>	<b>72.71</b>	<b>2715.10</b>	<b>4075.07</b>
<b>EASTERN REGION</b>														
Andaman Nicobar	0.00	0.00	5.16	5.67	0.00	0.00	0.00	0.00	0.95	0.11	0.00	0.00	0.00	0.00
Bihar	0.00	0.00	46.37	32.74	0.00	0.00	1.65	23.78	0.00	0.00	0.00	0.00	0.00	0.00
Jharkhand	0.00	0.00	2.94	2.94	0.00	0.00	0.00	0.00	0.00	0.00	0.00	0.00	22.03	14.59
Odisha	0.00	0.00	154.52	143.07	15.69	13.65	0.00	0.00	42.17	39.14	0.00	0.00	807.42	770.41
Sikkim	0.00	0.00	0.00	0.00	0.00	0.00	0.00	0.00	2.06	2.06	0.00	0.00	160.78	1461.52
West Bengal	0.00	0.00	47.67	26.44	0.00	0.00	0.00	0.00	20.92	31.78	235.55	268.41	340.64	415.98
<b>Eastern Region</b>	<b>0.00</b>	<b>0.00</b>	<b>256.65</b>	<b>210.86</b>	<b>15.69</b>	<b>13.65</b>	<b>1.65</b>	<b>23.78</b>	<b>66.11</b>	<b>73.09</b>	<b>235.55</b>	<b>268.41</b>	<b>1330.87</b>	<b>2662.50</b>
<b>NORTH-EASTERN REGION</b>														
Arunachal Pradesh	0.00	0.00	0.19	0.39	0.00	0.00	0.00	0.00	0.10	0.14	0.00	0.00	566.27	483.41

RE generation( MUs) data ( source wise) for the period of April 2024 -May 2024 and April 2023 -May 2023

Name of State/UT	Wind		Solar		Biomass		Bagasse		Small Hydro		Others (Waste to Energy)		Large Hydro	
	Apr'24-May'24	Apr'23-May'23	Apr'24-May'24	Apr'23-May'23	Apr'24-May'24	Apr'23-May'23	Apr'24-May'24	Apr'23-May'23	Apr'24-May'24	Apr'23-May'23	Apr'24-May'24	Apr'23-May'23	Apr'24-May'24	Apr'23-May'23
Assam	0.00	0.00	55.87	55.02	0.00	0.00	0.00	0.00	34.13	5.30	0.11	0.00	120.84	29.95
Manipur	0.00	0.00	1.43	1.34	0.00	0.00	0.00	0.00	0.00	0.00	0.00	1.23	43.31	12.71
Meghalaya	0.00	0.00	0.00	0.00	0.00	0.00	0.00	0.00	12.77	8.66	0.00	0.00	115.40	84.66
Mizoram	0.00	0.00	0.71	0.53	0.00	0.00	0.00	0.00	15.99	15.99	0.00	0.00	11.25	12.47
Nagaland	0.00	0.00	0.00	0.00	0.00	0.00	0.00	0.00	3.85	7.06	0.00	0.00	9.99	3.14
Tripura	0.00	0.00	1.07	1.08	0.00	0.00	0.00	0.00	0.00	0.00	0.00	0.00	0.00	0.00
North Eastern Region	0.00	0.00	59.26	58.36	0.00	0.00	0.00	0.00	66.83	37.15	0.11	1.23	867.06	626.34
All India Total	12986.89	12366.83	24667.04	21094.84	573.89	612.66	1098.13	1539.07	1328.00	1313.54	482.92	461.64	20704.56	20187.65



This report is published by  
Renewable Project Monitoring Division  
Central Electricity Authority, New Delhi

For any query, please contact at:

011-26732320

[ce-rpmcea@cea.nic.in](mailto:ce-rpmcea@cea.nic.in) / [cerpmcea@gmail.com](mailto:cerpmcea@gmail.com)