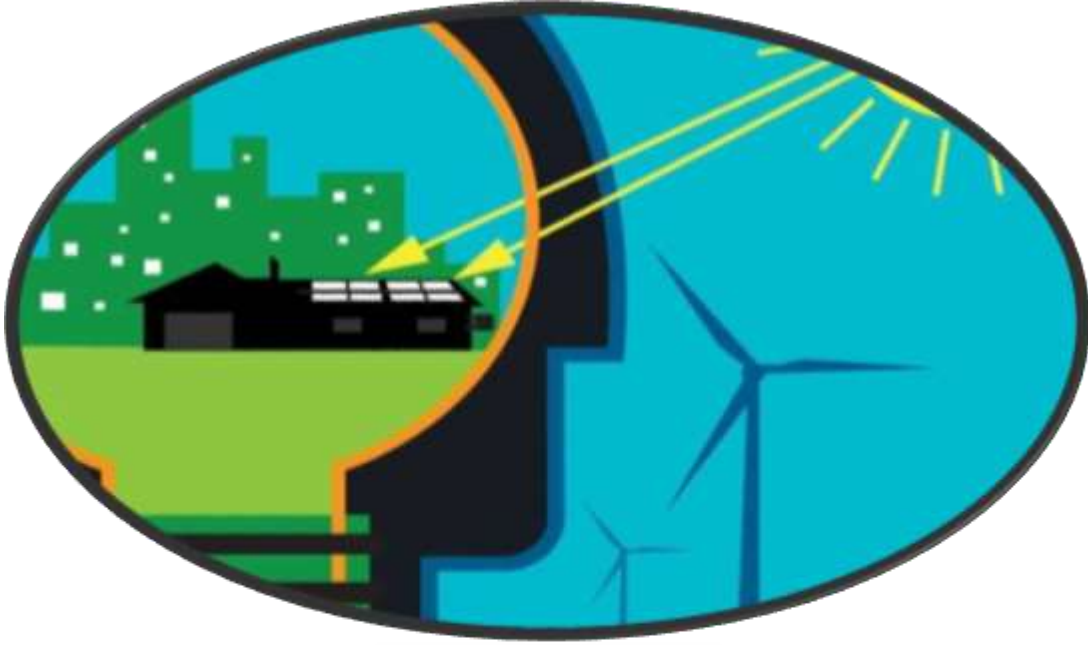




भारत सरकार  
Government of India  
विद्युत मंत्रालय  
Ministry of Power  
केन्द्रीय विद्युत प्राधिकरण  
Central Electricity Authority  
नवीकरणीय परियोजना प्रबोधन प्रभाग  
Renewable Project Monitoring Division

## मासिक नवीकरणीय ऊर्जा उत्पादन रिपोर्ट

## Monthly Renewable Energy Generation Report



अप्रैल 2024

April 2024

## Table of Contents

| Table No. | Titles  | Page No. |
|-----------|---|----------|
| 1.        | Summary of All India Total Renewable Energy Generation                  | 3        |
| Figure 1  | All India Monthly Energy Generation(April 24 ) in India and Share of RE | 4        |
| Figure 2  | Source wise breakup of RE Generation of April 2024.                     | 5        |
| 2.        | State wise Renewable Energy Generation                                  | 6        |
| 2.1       | Renewable Energy Generation from ISGS Plants                            | 8        |
| 2.2       | Renewable Energy Generation from CPSU Plants                            | 11       |
| 3.        | State wise Wind Power Generation  | 13       |
| 4.        | State wise Solar Power Generation                                       | 15       |
| 5.        | State wise Biomass Power Generation                                     | 17       |
| 6.        | State wise Bagasse Power Generation                                     | 19       |
| 7.        | State wise Small Hydro Power Generation                                 | 21       |
| 8.        | State wise Others Power Generation                                      | 23       |
| 9.        | State wise Large Hydro Power Generation                                 | 25       |

## Summary of All India Total Renewable Energy Generation

| Category                              | Installed Capacity (MW)<br>(as on 30.04.2024) | Monitored Capacity (MW)<br>(as on 30.04.2024)<br>for which generation data is available | RE Generation(MU)<br>April'2024 | RE Generation(MU)<br>April'2023 | % of same Month<br>Last Year |
|---------------------------------------|---|---|---------------------------------|---------------------------------|------------------------------|
| पवन/Wind                              | 46161.79                                      | 45691.52  | 4729.26                         | 4249.20                         | 111.30                       |
| सौर/Solar                             | 82637.86                                      | 68637.33(*)   | 12021.05                        | 10318.69                        | 116.50                       |
| बायोमास/Biomass                       | 10355.35                                      | 9751.51   | 278.73                          | 295.62                          | 94.29                        |
| बगास/Bagasse                          |   |   | 781.11                          | 1000.32                         | 78.09                        |
| लघु जल<br>विद्युत्/Small Hydro        | 5005.25                                       | 4209.20   | 581.90                          | 586.21                          | 99.27                        |
| बृहत् जल विद्युत्/<br>Large Hydro(\$) | 46928.17                                      | 46928.17  | 8109.14                         | 8728.97                         | 92.90                        |
| अन्य/Others                           | 591.30  | 815.19  | 231.36                          | 225.12                          | 102.78                       |
| <b>कुल/Total</b>                      | <b>191679.72</b>                              | <b>176032.92</b>  | <b>26732.56</b>                 | <b>25404.11</b>                 | <b>105.23</b>                |

(\*) Solar Installed capacity including 2.5 GW rooftop solar.

(\$) Large Hydro Generation data excluding import from Bhutan. However, the import from Bhutan during April 2024 is 75.60 MUs respectively.

All India Monthly Energy Generation (154.93 BU) April 2024

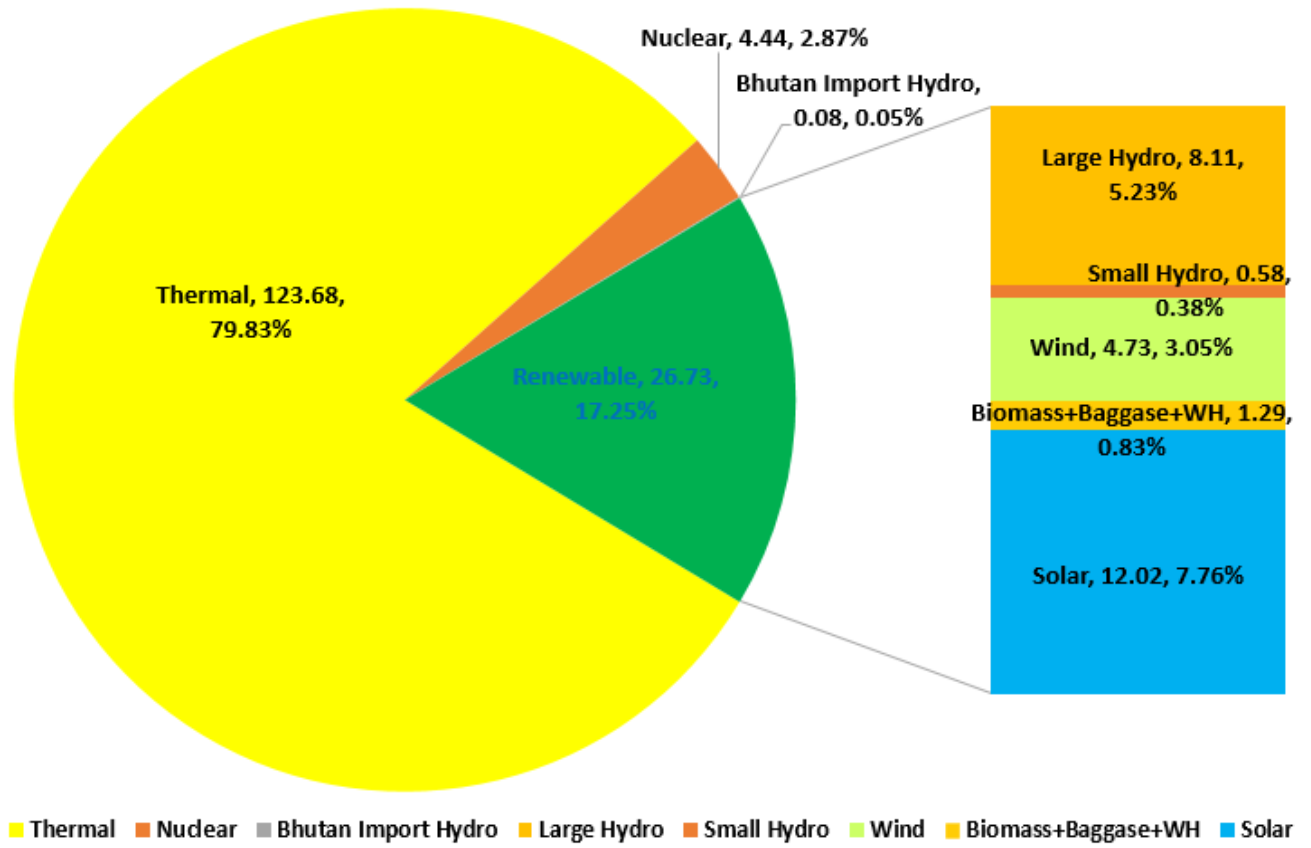
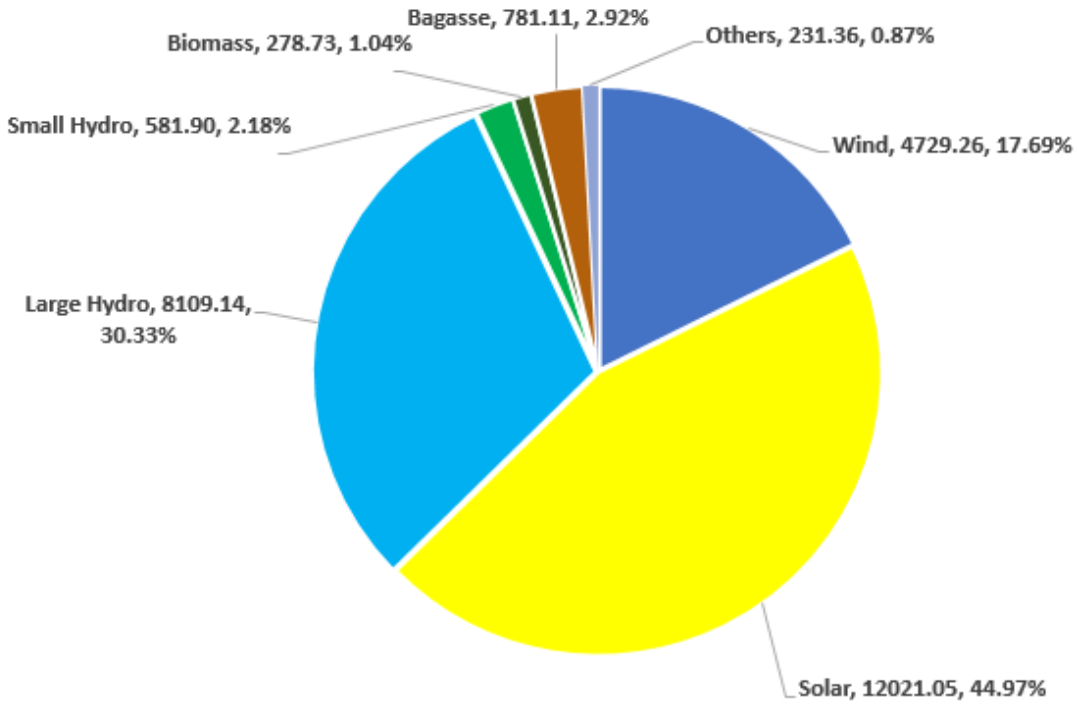


Figure 1: All India Monthly Energy Generation in India and Share of RE

**Source wise breakup of RE Generation for Month April 2024  
(26732.56 MU)**



**Figure 2: Source wise breakup of RE Generation of April 2024.**

## State wise Renewable Energy Generation

| Name of State/UT  | RE Generation(MU)<br>April'2024 | RE Generation(MU)<br>April'2023 |
|---|---------------------------------|---------------------------------|
| चंडीगढ़/ Chandigarh   | 1.02                            | 2.20                            |
| दिल्ली / Delhi #  | 64.04                           | 60.95                           |
| हरियाणा / Haryana   | 175.86                          | 118.52                          |
| हिमाचल प्रदेश / Himachal Pradesh  | 2172.64                         | 2019.30                         |
| जम्मू कश्मीर / Jammu & Kashmir  | 1500.23                         | 1538.38                         |
| लद्दाख / Ladakh *   | 14.89                           | 15.61                           |
| पंजाब / Punjab  | 542.27                          | 672.29                          |
| राजस्थान / Rajasthan  | 4522.39                         | 4106.22                         |
| उत्तर प्रदेश / Uttar Pradesh  | 706.52                          | 800.27                          |
| उत्तराखंड / Uttarakhand *   | 801.82                          | 777.56                          |
| <b>उप-कुल उत्तरी क्षेत्र /SUB TOTAL( NR)</b>                              | <b>10501.69</b>                 | <b>10111.30</b>                 |
| छत्तीसगढ़ / Chhattisgarh  | 272.08                          | 221.71                          |
| गुजरात / Gujarat  | 3715.62                         | 2799.97                         |
| मध्य प्रदेश / Madhya Pradesh  | 1377.74                         | 974.08                          |
| महाराष्ट्र / Maharashtra  | 1936.11                         | 1833.70                         |
| दादर व नगर हवेली और दमन और दिउ / Dadra and Nagar Haveli and Daman and Diu | 2.69                            | 2.43                            |
| गोवा / Goa*   | 5.44                            | 1.94                            |
| <b>उप-कुल पश्चिमी क्षेत्र / Sub Total (WR)</b>                            | <b>7309.67</b>                  | <b>5833.83</b>                  |
| आन्ध्र प्रदेश / Andhra Pradesh  | 1402.75                         | 1331.34                         |
| तेलंगाना / Telangana  | 696.02                          | 731.29                          |
| कर्नाटक / Karnataka   | 2751.57                         | 3262.43                         |
| केरल / Kerala   | 768.34                          | 716.52                          |
| तमिल नाडू / Tamil Nadu  | 1970.23                         | 1690.32                         |
| लक्षद्वीप /Lakshadweep *  | 0.01                            | 0.01                            |
| पुडुचेरी / Puducherry*  | 1.02                            | 1.02                            |
| <b>उप-कुल दक्षिणी क्षेत्र / SUB TOTAL( SR)</b>                            | <b>7589.94</b>                  | <b>7732.93</b>                  |
| अण्डमान एवं निकोबार/ Andaman & Nicobar                                    | 3.89                            | 2.82                            |
| बिहार / Bihar   | 23.94                           | 28.26                           |
| झारखण्ड / Jharkhand*  | 9.85                            | 12.14                           |

| Name of State/UT  | RE Generation(MU)<br>April'2024 | RE Generation(MU)<br>April'2023 |
|---|---------------------------------|---------------------------------|
| ओडिशा/ Odisha   | 538.10                          | 463.51                          |
| सिक्किम / Sikkim *                                      | 75.24                           | 546.28                          |
| पश्चिम बंगाल / West Bengal                              | 306.48                          | 334.46                          |
| <b>उप-कुल पूर्वी क्षेत्र / SUB TOTAL<br/>(ER)</b>       | <b>957.49</b>                   | <b>1387.48</b>                  |
| अरुणाचल प्रदेश /Arunachal Pradesh                       | 237.47                          | 220.16                          |
| असम / Assam   | 56.19                           | 41.05                           |
| मणिपुर / Manipur *                                      | 18.11                           | 8.33                            |
| मेघालय / Meghalaya                                      | 41.18                           | 45.15                           |
| मिज़ोरम / Mizoram                                       | 12.39                           | 18.69                           |
| नागालैंड / Nagaland                                     | 7.86                            | 4.65                            |
| त्रिपुरा / Tripura *                                    | 0.56                            | 0.54                            |
| <b>उप-कुल उत्तर-पूर्वी क्षेत्र /SUB<br/>TOTAL (NER)</b> | <b>373.76</b>                   | <b>338.57</b>                   |
| <b>सम्पूर्ण भारत(कुल)/ ALL INDIA<br/>TOTAL</b>          | <b>26732.56</b>                 | <b>25404.11</b>                 |

1. Data as received from SLDC of the respective states or from the electricity department.
  2. Figure given above indicates injected generation of all power stations (Central, State & Private Sector) located geographically in the respective State/UT.
- \* Data has been taken provisionally as of RE generation report of March 2024.

# Generation from other sources has been received .However solar power generation considered as on March 2024.

**NOTE:**

1. Generation from ISGS and CPSU owned RE generating stations according to physical location is included in respective State in Renewable Energy Generation Sheet in the above Renewable Energy Generation Sheet.
2. Lakshadweep and Andaman & Nicobar Islands are operating as isolated systems.

## Renewable Energy Generation from ISGS Plants for April 2024

| Station  | State/ Region | Sector<br>(Central/State/<br>Private) | Type  | Generation<br>(MU) |
|--|---------------|---------------------------------------|-------|--------------------|
| Unchahar Solar                                       | Uttar Pradesh | Central                               | Solar | 1.31               |
| Dadri Solar  | Uttar Pradesh | Central                               | Solar | 0.60               |
| Singrauli Solar                                      | Uttar Pradesh | Central                               | Solar | 1.88               |
| Auraiya  | Uttar Pradesh | Central                               | Solar | 6.80               |
| Kolayat  | Rajasthan     | Central                               | Solar | 90.33              |
| Nokhra   | Rajasthan     | Central                               | Solar | 61.13              |
| Devikot  | Rajasthan     | Central                               | Solar | 48.16              |
| ABC Renewable Energy                                 | Rajasthan     | Private                               | Solar | 66.64              |
| Acme Chittorgarh Energy Pvt Ltd.                     | Rajasthan     | Private                               | Solar | 52.58              |
| Acme Heergharh Powertech Pvt Ltd                     | Rajasthan     | Private                               | Solar | 64.28              |
| Adani Hybrid Energy Jaisalmer Four Limited           | Rajasthan     | Private                               | Solar | 161.45             |
| Adani Hybrid Energy Jaisalmer One Limited            | Rajasthan     | Private                               | Solar | 80.38              |
| Adani Hybrid Energy Jaisalmer Three Limited          | Rajasthan     | Private                               | Solar | 75.89              |
| Adani Hybrid Energy Jaisalmer Two Limited            | Rajasthan     | Private                               | Solar | 76.26              |
| ADANI SEJ2PL M                                       | Rajasthan     | Private                               | Solar | 31.84              |
| ADANI SEJ2PL P                                       | Rajasthan     | Private                               | Solar | 32.37              |
| ALTRA XERGI  | Rajasthan     | Private                               | Solar | 78.56              |
| AMP Energy Green Six                                 | Rajasthan     | Private                               | Solar | 24.20              |
| AMPLUS_AGES  | Rajasthan     | Private                               | Solar | 24.04              |
| ASERJ2PL   | Rajasthan     | Private                               | Solar | 32.75              |
| ASERJ2PL_INFRM                                       | Rajasthan     | Private                               | Solar | 11.30              |
| ASERJ2PL_BHDL  | Rajasthan     | Private                               | Solar | 15.12              |
| Adani Renewable Energy RJ Limited (RERJL)            | Rajasthan     | Private                               | Solar | 40.39              |
| Adani Jaisalmer One SEPL Solar                       | Rajasthan     | Private                               | Solar | 89.13              |
| Adani SB Energy Four Pvt. Ltd.( SE4PL(Kilaj Solar))  | Rajasthan     | Private                               | Solar | 10.74              |
| M/S Adani Solar Energy Four PVT. LTD.L(Adani SEJ5PL) | Rajasthan     | Private                               | Solar | 40.71              |
| Adani SB Energy Four Pvt. Ltd. (SERJ1PL)             | Rajasthan     | Private                               | Solar | 61.68              |
| Adept_ Renewable                                     | Rajasthan     | Private                               | Solar | 28.29              |
| Avaada Sunrays Energy Private Limited                | Rajasthan     | Private                               | Solar | 69.93              |
| Avaada RJHN Private Limited                          | Rajasthan     | Private                               | Solar | 49.48              |
| Avaada Sunce Energy Private Limited                  | Rajasthan     | Private                               | Solar | 71.79              |
| Avaada Sustainable RJ Project Private Ltd.           | Rajasthan     | Private                               | Solar | 62.82              |
| Ayana Renewable                                      | Rajasthan     | Private                               | Solar | 5.34               |
| Ayana Renewable Power One Private Limited            | Rajasthan     | Private                               | Solar | 62.38              |
| Azure Power Forty One Private Limited                | Rajasthan     | Private                               | Solar | 62.80              |
| Azure Power Forty Three Private Ltd                  | Rajasthan     | Private                               | Solar | 128.05             |
| Azure Power India Pvt Ltd                            | Rajasthan     | Private                               | Solar | 36.78              |
| Azure Power Maple Pvt Ltd                            | Rajasthan     | Private                               | Solar | 58.17              |
| Azure Power Thirty Four Private Ltd                  | Rajasthan     | Private                               | Solar | 25.99              |
| Clean Solar Power ( Jodhpur) Pvt Ltd                 | Rajasthan     | Private                               | Solar | 54.63              |
| Clean Solar Power (Bhadla) Pvt Ltd                   | Rajasthan     | Private                               | Solar | 64.25              |
| Eden Renewable Cite Private Limited                  | Rajasthan     | Private                               | Solar | 65.69              |
| GRIAN ENERGY   | Rajasthan     | Private                               | Solar | 23.06              |
| M/S Adani Solar Energy Jodhpur Two Ltd               | Rajasthan     | Private                               | Solar | 10.94              |
| MEGA SOILS RENEWABLE PRIVATE LIMITED                 | Rajasthan     | Private                               | Solar | 53.83              |
| Mega Surya Urja Pvt. Ltd                             | Rajasthan     | Private                               | Solar | 51.72              |
| M/S. ONEVOLT Energy Private Limited                  | Rajasthan     | Private                               | Solar | 23.22              |
| Nindan Solar Fatehgar                                | Rajasthan     | Private                               | Solar | 64.62              |



|  |                |         |       |                |
|--|----------------|---------|-------|----------------|
| Renew Solar Energy (Jharkhand Three) Pvt Ltd               | Rajasthan      | Private | Solar | 63.20          |
| Renew Solar Power Pvt Ltd                                  | Rajasthan      | Private | Solar | 10.75          |
| Renew Solar Power Pvt Ltd. Bikaner                         | Rajasthan      | Private | Solar | 51.95          |
| Renew Solar Urja Pvt Ltd                                   | Rajasthan      | Private | Solar | 62.05          |
| Renew Sun Bright Pvt Ltd                                   | Rajasthan      | Private | Solar | 63.23          |
| Renew Sun Waves Private Limited                            | Rajasthan      | Private | Solar | 63.53          |
| Renew Surya Pratap Infirm                                  | Rajasthan      | Private | Solar | 0.16           |
| Renew Surya Pratap   | Rajasthan      | Private | Solar | 40.30          |
| Renew Surya Ravi Pvt Ltd                                   | Rajasthan      | Private | Solar | 61.09          |
| Renew Surya Roshini infirm                                 | Rajasthan      | Private | Solar | 7.51           |
| Rising Sun Energy  | Rajasthan      | Private | Solar | 40.08          |
| Renew Surya Roshni   | Rajasthan      | Private | Solar | 50.61          |
| Renew Surya Vihaan   | Rajasthan      | Private | Solar | 19.80          |
| Renew Surya Ayaan  | Rajasthan      | Private | Solar | 55.30          |
| Tata Power Green Energy Limited                            | Rajasthan      | Private | Solar | 43.78          |
| Tata Power Renewable Energy Ltd                            | Rajasthan      | Private | Solar | 61.53          |
| Tata Power Saurya 1  | Rajasthan      | Private | Solar | 20.59          |
| TPSL Banderwala  | Rajasthan      | Private | Solar | 45.13          |
| Thar Surya1 Private Limited                                | Rajasthan      | Private | Solar | 64.35          |
| Transition Green Energy                                    | Rajasthan      | Private | Solar | 3.59           |
| Adani Hybrid Energy Jaisalmer Four Limited                 | Rajasthan      | Private | Wind  | 89.51          |
| Adani Hybrid Energy Jaisalmer One Limited                  | Rajasthan      | Private | Wind  | 20.28          |
| Adani Hybrid Energy Jaisalmer Three Limited                | Rajasthan      | Private | Wind  | 14.36          |
| Adani Hybrid Energy Jaisalmer Two Limited                  | Rajasthan      | Private | Wind  | 13.24          |
| Adani Jaisalmer One SEPL Wind                              | Rajasthan      | Private | Wind  | 23.97          |
| <b>Sub Total</b>   |                |         |       | <b>3344.19</b> |
| <b>Western Region</b>                                      |                |         |       |                |
| Beempo   | Madhya Pradesh | Private | Solar | 18.94          |
| Beempow Energy   | Madhya Pradesh | Private | Solar | 22.30          |
| Arinsun Solar (Barsaitadesh)                               | Madhya Pradesh | Private | Solar | 49.00          |
| Mahindra Solar (Badwar)                                    | Madhya Pradesh | Private | Solar | 47.06          |
| AVAADA_AGAR_RUM  | Madhya Pradesh | Private | Solar | 29.47          |
| Athena_RUM   | Madhya Pradesh | Private | Solar | 46.92          |
| Masaya BWSPPRA_KNDW  | Madhya Pradesh | Private | Solar | 53.87          |
| Sherisha Raipur  | Chhattisgarh   | Private | Solar | 7.97           |
| Solapur Solar  | Maharashtra    | Central | Solar | 1.82           |
| AREH4L_PSS1  | Gujarat        | Private | Solar | 212.51         |
| Electro Solaire Private Limited (ESPL RSP Solar)           | Gujarat        | Private | Solar | 43.83          |
| Tata Power Renewable Energy Limited (TPREL RSP Solar)      | Gujarat        | Private | Solar | 21.92          |
| Gujarat Industries Power Company Limited (GIPCL RSP Solar) | Gujarat        | Private | Solar | 22.84          |
| Powerica Wind  | Gujarat        | Private | Solar | 11.34          |
| NTPC Kawas   | Gujarat        | Central | Solar | 10.82          |
| Gandhar_Solar  | Gujarat        | Private | Solar | 4.05           |
| GSECL RSP  | Gujarat        | Private | Solar | 12.52          |
| RPL_SECI-III   | Gujarat        | Private | Solar | 48.50          |
| AGE25BL_PSS2_KPS1_SI                                       | Gujarat        | Private | Solar | 60.24          |
| AGE24AL  | Gujarat        | Private | Solar | 5.47           |
| Alfanar  | Gujarat        | Private | Wind  | 62.21          |
| AWEK1L WIND (RATADIYA)                                     | Gujarat        | Private | Wind  | 105.51         |
| Adani Wind Energy Kutchh Four Limited (AWEK4L)             | Gujarat        | Private | Wind  | 68.38          |
| Adani Wind Energy MP One Private Limited (AWEMP1PL)        | Gujarat        | Private | Wind  | 74.10          |

|  |                |         |       |                |
|--|----------------|---------|-------|----------------|
| Green Infra Wind Energy Limited SECI-II (Giwel-II Wind (Vadva))      | Gujarat        | Private | Wind  | 52.88          |
| Green Infra Wind Energy Limited SECI-III (Giwel-III Wind (Naranpar)) | Gujarat        | Private | Wind  | 64.26          |
| GSECL_PH2  | Gujarat        | Private | Wind  | 13.90          |
| Ostro Kutch Wind Private Limited (OKWPL)                             | Gujarat        | Private | Wind  | 69.88          |
| Renew Wind Energy (AP2) Private Limited (Ghadsisa)                   | Gujarat        | Private | Wind  | 66.11          |
| Avikiran Solar India Private Limited (ASIPL), Baranda                | Gujarat        | Private | Wind  | 35.26          |
| Apraava Khkrda Jam   | Gujarat        | Private | Wind  | 44.13          |
| Netra Kotda  | Gujarat        | Private | Wind  | 25.22          |
| Torrent Sidpur Jam   | Gujarat        | Private | Wind  | 19.05          |
| SITAC  | Gujarat        | Private | Wind  | 70.02          |
| SRIJAN   | Gujarat        | Private | Wind  | 27.22          |
| NVWEPL_DAYAPAR_BHJ_W   | Gujarat        | Private | Wind  | 57.98          |
| SGEL RSP   | Gujarat        | Private | Wind  | 13.51          |
| <b>Sub Total</b>   |                |         |       | <b>1601.01</b> |
| <b>Southern Region</b>   |                |         |       |                |
| Beetam(Tuticorin)  | Tamil Nadu     | Private | Wind  | 19.69          |
| GRTJIPL  | Tamil Nadu     | Private | Solar | 28.61          |
| Mytra  | Tamil Nadu     | Private | Wind  | 15.14          |
| Orange   | Tamil Nadu     | Private | Wind  | 17.25          |
| Green Infra  | Tamil Nadu     | Private | Wind  | 25.28          |
| Hiriyur Ostro  | Tamil Nadu     | Private | Wind  | 33.56          |
| Sprng Renewable Energy Pvt Ltd(Pugalur)                              | Tamil Nadu     | Private | Wind  | 18.53          |
| JSW Renew Energy Two Limited ( Tuticorin)                            | Tamil Nadu     | Private | Wind  | 28.47          |
| JSW Savlaperi  | Tamil Nadu     | Private | Wind  | 9.10           |
| Ettayapuram  | Tamil Nadu     | Central | Solar | 44.52          |
| Roshini Renew, Koppal  | Karnataka      | Private | Wind  | 5.02           |
| KOPPAL AYANASIX  | Karnataka      | Private | Wind  | 23.10          |
| RSOPL KOPPAL (Firm + Infirm)   | Karnataka      | Private | Wind  | 17.81          |
| Ramagundam Floating Solar  | Telangana      | Central | Solar | 18.42          |
| Simhadri Floating Solar  | Andhra Pradesh | Central | Solar | 4.77           |
| <b>Southern Region</b>   |                |         |       | <b>309.27</b>  |
| <b>All India Total</b>   |                |         |       | <b>5254.47</b> |

Note – 1.Generation from ISGS Projects is prepared from block wise data received from RPCs.

2.Generation of ISGS generating stations is included in respective state in Renewable Energy Generation Sheet according to physical location so their generation should not be considered additional generation.

## Renewable Energy Generation from CPSU Plants

| Name of CPSU                       | Name of State     | Installed Capacity (MW) | Source         | RE Generation (MU) April'24 | RE Generation (MU) April'23 |
|------------------------------------|-------------------|-------------------------|----------------|-----------------------------|-----------------------------|
| Faridabad_Solar                    | Haryana           | 5                       | Solar          | 0.55                        | 0.62                        |
| Bhadla                             | Rajasthan         | 260                     | Solar          | 35.58                       | 37.52                       |
| Jetsar                             | Rajasthan         | 160                     | Solar          | 34.18                       | 34.28                       |
| Fatehgarh                          | Rajasthan         | 296                     | Solar          | 65.15                       | 67.04                       |
| Devikot                            | Rajasthan         | 240                     | Solar          | 48.69                       | 49.68                       |
| Nokhra                             | Rajasthan         | 300                     | Solar          | 61.31                       | 59.62                       |
| Anta Solar                         | Rajasthan         | 57                      | Solar          | 0.45                        | 0.00                        |
| Dadri_Solar                        | Uttar Pradesh     | 5                       | Solar          | 0.58                        | 0.60                        |
| Unchahar_Solar                     | Uttar Pradesh     | 10                      | Solar          | 1.31                        | 1.33                        |
| Singrauli_Solar                    | Uttar Pradesh     | 15                      | Solar          | 1.94                        | 2.39                        |
| Auraiya                            | Uttar Pradesh     | 40                      | Solar          | 6.52                        | 6.46                        |
| Small Hydro Vindhyachal            | Uttar Pradesh     | 8                       | Small Hydro    | 2.59                        | 3.52                        |
| Ayodhya                            | Uttar Pradesh     | 14                      | Solar          | 4.66                        | 0.00                        |
| Chattargarh                        | Rajasthan         | 150                     | Solar          | 27.21                       | 0.00                        |
| Rojmal                             | Gujarat           | 50                      | Wind           | 7.19                        | 6.83                        |
| Dayapar                            | Gujarat           | 50                      | Wind           | 7.98                        | 0.00                        |
| Rajgarh_Solar                      | Madhya Pradesh    | 50                      | Solar          | 6.64                        | 6.52                        |
| Mandsaur                           | Madhya Pradesh    | 250                     | Solar          | 33.08                       | 34.17                       |
| Solapur                            | Maharashtra       | 10                      | Solar          | 1.83                        | 1.64                        |
| Anantapuram                        | Andhra Pradesh    | 250                     | Solar          | 36.75                       | 36.25                       |
| Ramagundam                         | Telangana         | 110                     | Solar          | 18.77                       | 19.46                       |
| Andaman & Nicobar                  | Andaman & Nicobar | 5                       | Solar          | 0.58                        | 0.57                        |
| Talchar_Solar                      | Orissa            | 10                      | Solar          | 1.08                        | 1.14                        |
| Solar_Bilhaur                      | Uttar Pradesh     | 225                     | Solar          | 48.59                       | 43.91                       |
| Simhadri Floating Project          | Andhra Pradesh    | 25                      | Solar          | 4.70                        | 4.90                        |
| Kayamkulam                         | Kerala            | 92                      | Solar          | 19.65                       | 20.03                       |
| Kawas                              | Gujarat           | 56                      | Solar          | 10.71                       | 10.48                       |
| Gandhar                            | Gujarat           | 20                      | Solar          | 4.13                        | 2.37                        |
| Shambu ki Burj-I                   | Rajasthan         | 250                     | Solar          | 54.70                       | 56.50                       |
| Shambu ki Burj-II                  | Rajasthan         | 150                     | Solar          | 35.68                       | 34.19                       |
| Ettayapuram                        | Tamil Nadu        | 230                     | Solar          | 44.86                       | 40.10                       |
| <b>Total NTPC</b>                  |                   | <b>3393</b>             |                | <b>627.64</b>               | <b>582.12</b>               |
| Patan Wind Power Project           | Gujarat           | 50.00                   | Wind           | 6.01                        | 5.50                        |
| Devbhumi Dwarka Wind Power Project | Gujarat           | 63.00                   | Wind           | 8.65                        | 7.77                        |
| Solar Kasaragod                    | Kerala            | 50.00                   | Solar          | 9.16                        | 9.67                        |
| Rishikesh office Premises          | Uttar Pradesh     | 0.50                    | Solar          | 0.05                        | 0.06                        |
| Dhukwan SHEP Jhansi,UP             | Uttar Pradesh     | 24.00                   | Small Hydro    | 0.38                        | 0.00                        |
| <b>Total THDC</b>                  |                   | <b>187.50</b>           |                | <b>24.25</b>                | <b>23.00</b>                |
| Wind Power Project                 | Rajasthan         | 50.00                   | Wind           | 4.33                        | 5.96                        |
| Solar Power Project                | Tamilnadu         | 50.00                   | Solar          | 7.84                        | 9.02                        |
| <b>Total NHPC</b>                  |                   | <b>100.00</b>           |                | <b>12.17</b>                | <b>14.98</b>                |
| Bhuj                               | Gujarat           | 51.00                   | Wind           | 4.95                        | 5.02                        |
| Jaisalmer                          | Rajasthan         | 102.00                  | Wind           | 6.96                        | 9.61                        |
| Assam                              | Assam             | 1.66                    | Roof Top       | 0.13                        | 0.15                        |
| Assam                              | Assam             | 1.09                    | Ground Mounted | 0.12                        | 0.13                        |
| Tripura                            | Tripura           | 0.25                    | Roof Top       | 0.02                        | 0.02                        |

| Name of CPSU                       | Name of State    | Installed Capacity (MW) | Source             | RE Generation (MU) April'24 | RE Generation (MU) April'23 |
|------------------------------------|------------------|-------------------------|--------------------|-----------------------------|-----------------------------|
| Rajahmundry,Base Complex           | Andhra Pradesh   | 1.00                    | Ground Mounted     | 0.11                        | 0.12                        |
| Tati Paka, Rajahmundry             | Andhra Pradesh   | 5.00                    | Ground Mounted     | 0.73                        | 0.63                        |
| Cauvery                            | Tamil Nadu       | 0.46                    | Ground Mounted     | 0.06                        | 0.01                        |
| Vagara, Ankleshwar                 | Gujarat          | 5.00                    | Ground Mounted     | 0.79                        | 0.82                        |
| Gujarat                            | Gujarat          | 4.23                    | Roof Top           | 0.48                        | 0.48                        |
| Jodhpur                            | Rajasthan        | 0.16                    | Ground Mounted     | 0.02                        | 0.03                        |
| Jaisalmer                          | Rajasthan        | 0.16                    | Ground Mounted     | 0.02                        | 0.00                        |
| Uttarakhand                        | Uttarakhand      | 1.24                    | Roof Top           | 0.11                        | 0.15                        |
| Goa                                | Goa              | 1.00                    | Ground Mounted     | 0.08                        | 0.15                        |
| Hazira                             | Gujarat          | 10.00                   | Ground Mounted     | 1.55                        | 1.51                        |
| Hazira                             | Gujarat          | 5.00                    | Ground Mounted     | 0.96                        | 0.72                        |
| Mumbai ( Uran & NBP Green Heights) | Maharashtra      | 0.29                    | Roof Top           | 0.17                        | 0.01                        |
| DDU, Bhawan, Delhi                 | Delhi            | 0.30                    | Roof Top           | 0.04                        | 0.04                        |
| ONGC Colony Noida                  | Uttar Pradesh    | 0.06                    | Roof Top           | 0.01                        | 0.01                        |
| EOA Logistics Park, Kakinada       | Andhra Pradesh   | 1.00                    | Roof Top           | 0.11                        | 0.00                        |
| Cambay                             | Gujarat          | 2.00                    | Ground Mounted SPP | 0.39                        | 0.00                        |
| <b>Total ONGC</b>                  |                  | <b>192.89</b>           |                    | <b>17.80</b>                | <b>19.61</b>                |
| Khirvire Wind Power                | Maharashtra      | 47.60                   | Wind               | 2.47                        | 2.03                        |
| Sadla Wind Power                   | Gujarat          | 50.00                   | Wind               | 7.21                        | 7.35                        |
| Charanka Solar Power               | Gujarat          | 5.60                    | Solar              | 0.84                        | 0.86                        |
| Wadhwal Solar Power Project        | Himachal Pradesh | 1.00                    | Solar              | 0.13                        | 0.13                        |
| Gurhah                             | Uttar Pradesh    | 75.00                   | Solar              | 15.66                       | 0.00                        |
| Gujari                             |                  | 50.00                   | Solar              | 9.73                        | 0.00                        |
| Parasan Solar Power                | Uttar Pradesh    | 75.00                   | Solar              | 15.80                       | 15.37                       |
| <b>Total SJVN</b>                  |                  | <b>304.20</b>           |                    | <b>51.84</b>                | <b>25.74</b>                |
| Oil India Ltd                      | Rajasthan        | 14.00                   | Solar              | 2.02                        | 2.10                        |
| Oil India Ltd                      | Rajasthan        | 67.60                   | Wind               | 4.80                        | 5.10                        |
| Oil India Ltd                      | Gujarat          | 43.30                   | Wind               | 6.77                        | 7.94                        |
| Oil India Ltd                      | Madhya Pradesh   | 63.20                   | Wind               | 10.97                       | 11.26                       |
| <b>Total Oil India Ltd</b>         |                  | <b>188.10</b>           |                    | <b>24.56</b>                | <b>26.40</b>                |
| NEEPCO                             | Tripura          | 5.00                    | Solar              | 0.56                        | 0.54                        |
| NEEPCO                             | Assam            | 25.00                   | Small Hydro        | 11.94                       | 0.00                        |
| <b>Total NEEPCO</b>                |                  | <b>30.00</b>            |                    | <b>12.50</b>                | <b>0.54</b>                 |
| DVC                                | West Bengal      | 10.10                   | Solar              | 1.70                        | 0.01                        |
| DVC                                | Jharkhand        | 4.00                    | Small Hydro        | 0.00                        | 0.00                        |
| <b>Total DVC</b>                   |                  | <b>14.10</b>            |                    | <b>1.70</b>                 | <b>0.01</b>                 |
| <b>All India Total</b>             |                  | <b>4409.79</b>          |                    | <b>772.47</b>               | <b>692.41</b>               |

**Note:1.** Generation of CPSU owned RE generating stations is included in respective state in Renewable Energy.

**2.** Generation Sheet according to physical location so their generation should not be considered additional generation.

## State wise Wind Power Generation

| Name of State/UT  | Wind Power Generation(MU) April'2024 | Wind Power Generation(MU) April'2023 |
|---|--------------------------------------|--------------------------------------|
| <b>उत्तरी क्षेत्र / NORTHERN REGION</b>                                   |                                      |                                      |
| चंडीगढ़/ Chandigarh   | 0.00                                 | 0.00                                 |
| दिल्ली / Delhi  | 0.00                                 | 0.00                                 |
| हरियाणा / Haryana   | 0.00                                 | 0.00                                 |
| हिमाचल प्रदेश/ Himachal Pradesh   | 0.00                                 | 0.00                                 |
| जम्मू कश्मीर / Jammu & Kashmir  | 0.00                                 | 0.00                                 |
| लद्दाख / Ladakh   | 0.00                                 | 0.00                                 |
| पंजाब / Punjab  | 0.00                                 | 0.00                                 |
| राजस्थान / Rajasthan  | 515.94                               | 676.56                               |
| उत्तर प्रदेश /Uttar Pradesh   | 0.00                                 | 0.00                                 |
| उत्तराखंड / Uttarakhand   | 0.00                                 | 0.00                                 |
| <b>उप-कुल उत्तरी क्षेत्र /SUB TOTAL( NR)</b>                              | <b>515.94</b>                        | <b>676.56</b>                        |
| <b>पश्चिमी क्षेत्र / WESTERN REGION</b>                                   |                                      |                                      |
| छत्तीसगढ़ / Chhattisgarh  | 0.00                                 | 0.00                                 |
| गुजरात / Gujarat  | 1932.36                              | 1478.24                              |
| मध्य प्रदेश / Madhya Pradesh  | 439.77                               | 442.25                               |
| महाराष्ट्र / Maharashtra  | 448.39                               | 387.52                               |
| दादर व नगर हवेली और दमन और दिउ / Dadra and Nagar Haveli and Daman and Diu | 0.00                                 | 0.00                                 |
| गोवा / Goa  | 0.00                                 | 0.00                                 |
| <b>उप-कुल पश्चिमी क्षेत्र / Sub Total (WR)</b>                            | <b>2820.52</b>                       | <b>2308.01</b>                       |
| <b>दक्षिणी क्षेत्र / SOUTHERN REGION</b>                                  |                                      |                                      |
| आन्ध्र प्रदेश/Andhra Pradesh  | 422.73                               | 365.83                               |
| तेलंगाना / Telangana  | 20.15                                | 19.11                                |
| कर्नाटक / Karnataka   | 505.76                               | 496.73                               |
| केरल / Kerala   | 4.89                                 | 4.15                                 |
| तमिल नाडू / Tamil Nadu  | 439.28                               | 378.80                               |
| लक्षद्वीप /Lakshadweep  | 0.00                                 | 0.00                                 |
| पुडुचेरी / Puducherry   | 0.00                                 | 0.00                                 |

| Name of State/UT                                     | Wind Power Generation(MU) April'2024 | Wind Power Generation(MU) April'2023 |
|--|--------------------------------------|--------------------------------------|
| <b>उप-कुल दक्षिणी क्षेत्र /SUB TOTAL( SR)</b>        | <b>1392.80</b>                       | <b>1264.63</b>                       |
| <b>पूर्वी क्षेत्र/ EASTERN REGION</b>                |                                      |                                      |
| अण्डमान एवं निकोबार/<br>Andaman & Nicobar            | 0.00                                 | 0.00                                 |
| बिहार / Bihar  | 0.00                                 | 0.00                                 |
| झारखण्ड / Jharkhand                                  | 0.00                                 | 0.00                                 |
| ओडिशा/ Odisha  | 0.00                                 | 0.00                                 |
| सिक्किम / Sikkim                                     | 0.00                                 | 0.00                                 |
| पश्चिम बंगाल / West Bengal                           | 0.00                                 | 0.00                                 |
| <b>उप-कुल पूर्वी क्षेत्र / SUB TOTAL (ER)</b>        | <b>0.00</b>                          | <b>0.00</b>                          |
| <b>उत्तर-पूर्वी क्षेत्र / NORTH-EASTERN REGION</b>   |                                      |                                      |
| अरुणाचल प्रदेश / Arunachal Pradesh                   | 0.00                                 | 0.00                                 |
| असम / Assam  | 0.00                                 | 0.00                                 |
| मणिपुर / Manipur                                     | 0.00                                 | 0.00                                 |
| मेघालय / Meghalaya                                   | 0.00                                 | 0.00                                 |
| मिज़ोरम / Mizoram                                    | 0.00                                 | 0.00                                 |
| नागालैंड / Nagaland                                  | 0.00                                 | 0.00                                 |
| त्रिपुरा / Tripura                                   | 0.00                                 | 0.00                                 |
| <b>उप-कुल उत्तर-पूर्वी क्षेत्र / SUB TOTAL (NER)</b> | <b>0.00</b>                          | <b>0.00</b>                          |
| <b>सम्पूर्ण भारत (कुल)/ ALL INDIA TOTAL</b>          | <b>4729.26</b>                       | <b>4249.20</b>                       |

## State wise Solar Power Generation

| Name of State/UT  | Solar Power Generation ( MU) April'2024 | Solar Power Generation(MU) April'2023 |
|---|---|---------------------------------------|
| चंडीगढ़/ Chandigarh   | 1.02                                    | 2.20                                  |
| दिल्ली / Delhi  | 17.21                                   | 17.21                                 |
| हरियाणा / Haryana   | 118.98                                  | 57.14                                 |
| हिमाचल प्रदेश / Himachal Pradesh  | 6.16                                    | 5.11                                  |
| जम्मू कश्मीर / Jammu & Kashmir  | 0.00                                    | 0.00                                  |
| लद्दाख / Ladakh   | 0.00                                    | 0.00                                  |
| पंजाब / Punjab  | 127.54                                  | 338.65                                |
| राजस्थान / Rajasthan  | 3956.09                                 | 3395.19                               |
| उत्तर प्रदेश / Uttar Pradesh  | 466.01                                  | 376.83                                |
| उत्तराखंड / Uttarakhand   | 27.65                                   | 27.65                                 |
| <b>उप-कुल उत्तरी क्षेत्र / SUB TOTAL( NR)</b>                             | <b>4720.66</b>                          | <b>4219.97</b>                        |
| छत्तीसगढ़ / Chhattisgarh  | 136.83                                  | 72.10                                 |
| गुजरात / Gujarat  | 1574.40                                 | 1147.51                               |
| मध्य प्रदेश / Madhya Pradesh  | 482.19                                  | 327.15                                |
| महाराष्ट्र / Maharashtra  | 598.96                                  | 502.49                                |
| दादर व नगर हवेली और दमन और दिउ / Dadra and Nagar Haveli and Daman and Diu | 1.79                                    | 1.64                                  |
| गोवा / Goa  | 4.76                                    | 1.51                                  |
| <b>उप-कुल पश्चिमी क्षेत्र / Sub Total (WR)</b>                            | <b>2798.94</b>                          | <b>2052.40</b>                        |
| आन्ध्र प्रदेश / Andhra Pradesh  | 791.54                                  | 800.19                                |
| तेलंगाना / Telangana  | 644.62                                  | 634.38                                |
| कर्नाटक / Karnataka   | 1436.88                                 | 1405.50                               |
| केरल / Kerala   | 181.93                                  | 103.14                                |
| तमिल नाडू / Tamil Nadu  | 1291.09                                 | 970.18                                |
| लक्षद्वीप /Lakshadweep  | 0.01                                    | 0.01                                  |
| पुडुचेरी / Puducherry   | 1.02                                    | 1.02                                  |
| <b>उप-कुल दक्षिणी क्षेत्र / SUB TOTAL( SR)</b>                            | <b>4347.09</b>                          | <b>3914.41</b>                        |
| अण्डमान एवं निकोबार/ Andaman & Nicobar                                    | 3.07                                    | 2.81                                  |
| बिहार / Bihar   | 22.28                                   | 16.37                                 |
| झारखण्ड / Jharkhand   | 1.47                                    | 1.47                                  |
| ओडिशा/ Odisha   | 73.57                                   | 68.95                                 |

| Name of State/UT                                     | Solar Power Generation ( MU) April'2024 | Solar Power Generation(MU) April'2023 |
|--|---|---------------------------------------|
| सिक्किम / Sikkim                                     | 0.00                                    | 0.00                                  |
| पश्चिम बंगाल / West Bengal                           | 23.66                                   | 13.13                                 |
| <b>उप-कुल पूर्वी क्षेत्र / SUB TOTAL (ER)</b>        | <b>124.05</b>                           | <b>102.74</b>                         |
| अरुणाचल प्रदेश / Arunachal Pradesh                   | 0.09                                    | 0.19                                  |
| असम / Assam  | 28.60                                   | 27.51                                 |
| मणिपुर / Manipur                                     | 0.71                                    | 0.67                                  |
| मेघालय / Meghalaya                                   | 0.00                                    | 0.00                                  |
| मिज़ोरम / Mizoram                                    | 0.35                                    | 0.27                                  |
| नागालैंड / Nagaland                                  | 0.00                                    | 0.00                                  |
| त्रिपुरा / Tripura                                   | 0.56                                    | 0.54                                  |
| <b>उप-कुल उत्तर-पूर्वी क्षेत्र / SUB TOTAL (NER)</b> | <b>30.32</b>                            | <b>29.17</b>                          |
| <b>सम्पूर्ण भारत (कुल)/ ALL INDIA TOTAL</b>          | <b>12021.05</b>                         | <b>10318.69</b>                       |



## State wise Biomass Power Generation

| Name of State/UT   | Biomass Power Generation (MU) April'2024 | Biomass Power Generation(MU) April'2023 |
|--|--|---|
| चंडीगढ़ /Chandigarh  | 0.00                                     | 0.00                                    |
| दिल्ली /Delhi  | 0.00                                     | 0.00                                    |
| हरियाणा /Haryana   | 28.83                                    | 24.27                                   |
| हिमाचल प्रदेश /Himachal Pradesh  | 0.00                                     | 0.00                                    |
| जम्मू कश्मीर /Jammu & Kashmir  | 0.00                                     | 0.00                                    |
| लद्दाख /Ladakh   | 0.00                                     | 0.00                                    |
| पंजाब /Punjab  | 61.04                                    | 53.04                                   |
| राजस्थान /Rajasthan  | 36.00                                    | 31.34                                   |
| उत्तर प्रदेश /Uttar Pradesh  | 5.41                                     | 5.67                                    |
| उत्तराखंड /Uttarakhand   | 0.00                                     | 0.00                                    |
| <b>उप-कुल उत्तरी क्षेत्र / SUB TOTAL (NR)</b>                            | <b>131.28</b>                            | <b>114.32</b>                           |
| छत्तीसगढ़ /Chhattisgarh  | 91.37                                    | 119.40                                  |
| गुजरात /Gujarat  | 0.00                                     | 0.00                                    |
| मध्य प्रदेश /Madhya Pradesh  | 7.49                                     | 8.98                                    |
| महाराष्ट्र /Maharashtra  | 25.81                                    | 25.93                                   |
| दादर व नगर हवेली और दमन और दिउ /Dadra and Nagar Haveli and Daman and Diu | 0.89                                     | 0.80                                    |
| गोवा /Goa  | 0.00                                     | 0.00                                    |
| <b>उप-कुल पश्चिमी क्षेत्र / Sub Total (WR)</b>                           | <b>125.56</b>                            | <b>155.11</b>                           |
| आन्ध्र प्रदेश /Andhra Pradesh  | 1.52                                     | 4.20                                    |
| तेलंगाना /Telangana  | 0.06                                     | 0.04                                    |
| कर्नाटक /Karnataka   | 0.65                                     | 5.38                                    |
| केरल /Kerala   | 0.00                                     | 0.00                                    |
| तमिल नाडू /Tamil Nadu  | 12.08                                    | 10.56                                   |
| लक्षद्वीप /Lakshadweep   | 0.00                                     | 0.00                                    |
| पुडुचेरी /Puducherry   | 0.00                                     | 0.00                                    |
| <b>उप-कुल दक्षिणी क्षेत्र / SUB TOTAL (SR)</b>                           | <b>14.30</b>                             | <b>20.18</b>                            |
| अण्डमान एवं निकोबार /Andaman & Nicobar                                   | 0.00                                     | 0.00                                    |
| बिहार /Bihar   | 0.00                                     | 0.00                                    |
| झारखण्ड /Jharkhand   | 0.00                                     | 0.00                                    |
| ओडिशा /Odisha  | 7.59                                     | 6.00                                    |
| सिक्किम /Sikkim  | 0.00                                     | 0.00                                    |
| पश्चिम बंगाल /West Bengal  | 0.00                                     | 0.00                                    |

| Name of State/UT                                     | Biomass Power Generation (MU) April'2024 | Biomass Power Generation(MU) April'2023 |
|--|--|---|
| <b>उप-कुल पूर्वी क्षेत्र / SUB TOTAL (ER)</b>        | <b>7.59</b>                              | <b>6.00</b>                             |
| अरुणाचल प्रदेश /Arunachal Pradesh                    | 0.00                                     | 0.00                                    |
| असम /Assam   | 0.00                                     | 0.00                                    |
| मणिपुर /Manipur                                      | 0.00                                     | 0.00                                    |
| मेघालय /Meghalaya                                    | 0.00                                     | 0.00                                    |
| मिज़ोरम /Mizoram                                     | 0.00                                     | 0.00                                    |
| नागालैंड /Nagaland                                   | 0.00                                     | 0.00                                    |
| त्रिपुरा /Tripura                                    | 0.00                                     | 0.00                                    |
| <b>उप-कुल उत्तर-पूर्वी क्षेत्र / SUB TOTAL (NER)</b> | <b>0.00</b>                              | <b>0.00</b>                             |
| <b>सम्पूर्ण भारत (कुल)/(ALL INDIA TOTAL)</b>         | <b>278.73</b>                            | <b>295.62</b>                           |

## State wise Bagasse Power Generation

| Name of State/UT  | Bagasse Power Generation(MU) April'2024 | Bagasse Power Generation(MU) April'2023 |
|---|---|---|
| चंडीगढ़ / Chandigarh  | 0.00                                    | 0.00                                    |
| दिल्ली / Delhi  | 0.00                                    | 0.00                                    |
| हरियाणा / Haryana   | 8.92                                    | 25.62                                   |
| हिमाचल प्रदेश / Himachal Pradesh  | 0.00                                    | 0.00                                    |
| जम्मू कश्मीर / Jammu & Kashmir  | 0.00                                    | 0.00                                    |
| लद्दाख / Ladakh   | 0.00                                    | 0.00                                    |
| पंजाब / Punjab  | 97.34                                   | 26.90                                   |
| राजस्थान / Rajasthan  | 0.00                                    | 0.00                                    |
| उत्तर प्रदेश / Uttar Pradesh  | 210.91                                  | 378.65                                  |
| उत्तराखंड / Uttarakhand   | 20.71                                   | 20.71                                   |
| <b>उप-कुल उत्तरी क्षेत्र / SUB TOTAL( NR)</b>                             | <b>337.88</b>                           | <b>451.88</b>                           |
| छत्तीसगढ़ / Chhattisgarh  | 2.31                                    | 1.92                                    |
| गुजरात / Gujarat  | 0.00                                    | 0.00                                    |
| मध्य प्रदेश / Madhya Pradesh  | 13.62                                   | 9.93                                    |
| महाराष्ट्र / Maharashtra  | 244.05                                  | 199.38                                  |
| दादर व नगर हवेली और दमन और दिउ / Dadra and Nagar Haveli and Daman and Diu | 0.00                                    | 0.00                                    |
| गोवा / Goa  | 0.00                                    | 0.00                                    |
| <b>उप-कुल पश्चिमी क्षेत्र / Sub Total (WR)</b>                            | <b>259.98</b>                           | <b>211.23</b>                           |
| आन्ध्र प्रदेश / Andhra Pradesh  | 1.86                                    | 5.79                                    |
| तेलंगाना / Telangana  | 0.00                                    | 11.43                                   |
| कर्नाटक / Karnataka   | 119.49                                  | 224.43                                  |
| केरल / Kerala   | 7.19                                    | 7.12                                    |
| तमिल नाडू / Tamil Nadu  | 53.07                                   | 76.55                                   |
| लक्षद्वीप /Lakshadweep  | 0.00                                    | 0.00                                    |
| पुडुचेरी / Puducherry   | 0.00                                    | 0.00                                    |
| <b>उप-कुल दक्षिणी क्षेत्र / SUB TOTAL( SR)</b>                            | <b>181.60</b>                           | <b>325.32</b>                           |
| अण्डमान एवं निकोबार/ Andaman & Nicobar                                    | 0.00                                    | 0.00                                    |
| बिहार / Bihar   | 1.65                                    | 11.89                                   |
| झारखण्ड / Jharkhand   | 0.00                                    | 0.00                                    |
| ओडिशा/ Odisha   | 0.00                                    | 0.00                                    |
| सिक्किम / Sikkim  | 0.00                                    | 0.00                                    |
| पश्चिम बंगाल / West Bengal  | 0.00                                    | 0.00                                    |

| Name of State/UT                                     | Bagasse Power Generation(MU) April'2024 | Bagasse Power Generation(MU) April'2023 |
|--|---|---|
| <b>उप-कुल पूर्वी क्षेत्र / SUB TOTAL (ER)</b>        | <b>1.65</b>                             | <b>11.89</b>                            |
| अरुणाचल प्रदेश / Arunachal Pradesh                   | 0.00                                    | 0.00                                    |
| असम / Assam  | 0.00                                    | 0.00                                    |
| मणिपुर / Manipur                                     | 0.00                                    | 0.00                                    |
| मेघालय / Meghalaya                                   | 0.00                                    | 0.00                                    |
| मिज़ोरम / Mizoram                                    | 0.00                                    | 0.00                                    |
| नागालैंड / Nagaland                                  | 0.00                                    | 0.00                                    |
| त्रिपुरा / Tripura                                   | 0.00                                    | 0.00                                    |
| <b>उप-कुल उत्तर-पूर्वी क्षेत्र / SUB TOTAL (NER)</b> | <b>0.00</b>                             | <b>0.00</b>                             |
| <b>सम्पूर्ण भारत (कुल)/ ALL INDIA TOTAL</b>          | <b>781.11</b>                           | <b>1000.32</b>                          |

## State wise Small Hydro Power (up to 25 MW Installed Capacity) Generation

| Name of State/UT  | Small Hydro Power Generation(MU) April'2024 | Small Hydro Power Generation(MU) April'2023 |
|---|---|---|
| चंडीगढ़/ Chandigarh   | 0.00  | 0.00  |
| दिल्ली / Delhi  | 0.00  | 0.00  |
| हरियाणा / Haryana   | 13.72                                       | 6.36  |
| हिमाचल प्रदेश / Himachal Pradesh  | 215.23                                      | 181.44                                      |
| जम्मू कश्मीर / Jammu & Kashmir  | 54.22                                       | 39.96                                       |
| लद्दाख / Ladakh   | 0.00  | 0.00  |
| पंजाब / Punjab  | 35.69                                       | 36.25                                       |
| राजस्थान / Rajasthan  | 0.34  | 0.00  |
| उत्तर प्रदेश / Uttar Pradesh  | 3.22  | 7.40  |
| उत्तराखंड / Uttarakhand   | 29.45                                       | 29.45                                       |
| <b>उप-कुल उत्तरी क्षेत्र / SUB TOTAL( NR)</b>                             | <b>351.87</b>                               | <b>300.85</b>                               |
| छत्तीसगढ़ / Chhattisgarh  | 0.68  | 5.97  |
| गुजरात / Gujarat  | 20.10                                       | 19.68                                       |
| मध्य प्रदेश / Madhya Pradesh  | 32.42                                       | 28.20                                       |
| महाराष्ट्र / Maharashtra  | 73.24                                       | 69.94                                       |
| दादर व नगर हवेली और दमन और दिउ / Dadra and Nagar Haveli and Daman and Diu | 0.00  | 0.00  |
| गोवा / Goa  | 0.00  | 0.00  |
| <b>उप-कुल पश्चिमी क्षेत्र / Sub Total (WR)</b>                            | <b>126.44</b>                               | <b>123.79</b>                               |
| आन्ध्र प्रदेश / Andhra Pradesh  | 4.88  | 12.99                                       |
| तेलंगाना / Telangana  | 0.68  | 2.82  |
| कर्नाटक / Karnataka   | 8.31  | 47.09                                       |
| केरल / Kerala   | 35.05                                       | 36.42                                       |
| तमिल नाडू / Tamil Nadu  | 3.71  | 8.28  |
| लक्षद्वीप /Lakshadweep  | 0.00  | 0.00  |
| पुदुचेरी / Puducherry   | 0.00  | 0.00  |
| <b>उप-कुल दक्षिणी क्षेत्र / SUB TOTAL( SR)</b>                            | <b>52.63</b>                                | <b>107.59</b>                               |
| अण्डमान एवं निकोबार/ Andaman & Nicobar                                    | 0.82  | 0.01  |
| बिहार / Bihar   | 0.00  | 0.00  |
| झारखण्ड / Jharkhand   | 0.00  | 0.00  |
| ओडिशा/ Odisha   | 18.96                                       | 19.82                                       |
| सिक्किम / Sikkim  | 1.03  | 1.03  |
| पश्चिम बंगाल / West Bengal  | 13.37                                       | 14.42                                       |

| Name of State/UT                                     | Small Hydro Power Generation(MU) April'2024 | Small Hydro Power Generation(MU) April'2023 |
|--|---|---|
| <b>उप-कुल पूर्वी क्षेत्र / SUB TOTAL (ER)</b>        | <b>34.18</b>                                | <b>35.28</b>                                |
| अरुणाचल प्रदेश / Arunachal Pradesh                   | 0.05  | 0.08  |
| असम / Assam  | 1.44  | 2.65  |
| मणिपुर / Manipur                                     | 0.00  | 0.00  |
| मेघालय / Meghalaya                                   | 3.82  | 4.73  |
| मिज़ोरम / Mizoram                                    | 7.99  | 7.99  |
| नागालैंड / Nagaland                                  | 3.47  | 3.24  |
| त्रिपुरा / Tripura                                   | 0.00  | 0.00  |
| <b>उप-कुल उत्तर-पूर्वी क्षेत्र / SUB TOTAL (NER)</b> | <b>16.77</b>                                | <b>18.69</b>                                |
| <b>सम्पूर्ण भारत (कुल)/ ALL INDIA TOTAL</b>          | <b>581.90</b>                               | <b>586.21</b>                               |

## State wise Others (Waste to energy) Power Generation

| Name of State/UT  | Others Power Generation(MU)<br>April'2024 | Others Power Generation(MU)<br>April'2023 |
|---|---|---|
| चंडीगढ़ / Chandigarh  | 0.00                                      | 0.00                                      |
| दिल्ली / Delhi  | 46.83                                     | 43.74                                     |
| हरियाणा / Haryana   | 5.41                                      | 5.13                                      |
| हिमाचल प्रदेश / Himachal Pradesh  | 0.00                                      | 0.00                                      |
| जम्मू कश्मीर / Jammu & Kashmir  | 0.00                                      | 0.00                                      |
| लद्दाख / Ladakh   | 0.00                                      | 0.00                                      |
| पंजाब / Punjab  | 0.00                                      | 0.00                                      |
| राजस्थान / Rajasthan  | 0.00                                      | 0.00                                      |
| उत्तर प्रदेश / Uttar Pradesh  | 3.39                                      | 6.70                                      |
| उत्तराखंड / Uttarakhand   | 0.00                                      | 0.00                                      |
| <b>उप-कुल उत्तरी क्षेत्र / SUB TOTAL( NR)</b>                             | <b>55.63</b>                              | <b>55.57</b>                              |
| छत्तीसगढ़ / Chhattisgarh  |   |   |
| गुजरात / Gujarat  | 0.00                                      | 0.00                                      |
| मध्य प्रदेश / Madhya Pradesh  | 0.00                                      | 0.00                                      |
| महाराष्ट्र / Maharashtra  | 5.26                                      | 2.80                                      |
| दादर व नगर हवेली और दमन और दिउ / Dadra and Nagar Haveli and Daman and Diu | 8.45                                      | 0.01                                      |
| गोवा / Goa  | 0.00                                      | 0.00                                      |
| <b>उप-कुल पश्चिमी क्षेत्र / Sub Total (WR)</b>                            | <b>0.68</b>                               | <b>0.42</b>                               |
| आन्ध्र प्रदेश / Andhra Pradesh  | 27.10                                     | 25.39                                     |
| तेलंगाना / Telangana  | 21.52                                     | 11.60                                     |
| कर्नाटक / Karnataka   | 0.00                                      | 0.00                                      |
| केरल / Kerala   | 0.00                                      | 0.00                                      |
| तमिल नाडू / Tamil Nadu  | 0.00                                      | 0.00                                      |
| लक्षद्वीप /Lakshadweep  | 0.00                                      | 0.00                                      |
| पुडुचेरी / Puducherry   | 0.00                                      | 0.00                                      |
| <b>उप-कुल दक्षिणी क्षेत्र / SUB TOTAL( SR)</b>                            | <b>48.62</b>                              | <b>36.99</b>                              |
| अण्डमान एवं निकोबार/ Andaman & Nicobar                                    | 0.00                                      | 0.00                                      |
| बिहार / Bihar   | 0.00                                      | 0.00                                      |
| झारखण्ड / Jharkhand   | 0.00                                      | 0.00                                      |
| ओडिशा/ Odisha   | 0.00                                      | 0.00                                      |
| सिक्किम / Sikkim  | 0.00                                      | 0.00                                      |
| पश्चिम बंगाल / West Bengal  | 112.68                                    | 128.71                                    |

| Name of State/UT   | Others Power Generation(MU)<br>April'2024 | Others Power Generation(MU)<br>April'2023 |
|--|---|---|
| <b>उप-कुल पूर्वी क्षेत्र / SUB<br/>TOTAL (ER)</b>        | <b>112.68</b>                             | <b>128.71</b>                             |
| अरुणाचल प्रदेश / Arunachal Pradesh                       | 0.00                                      | 0.00                                      |
| असम / Assam  | 0.04                                      | 0.00                                      |
| मणिपुर / Manipur   | 0.00                                      | 0.62                                      |
| मेघालय / Meghalaya                                       | 0.00                                      | 0.00                                      |
| मिज़ोरम / Mizoram  | 0.00                                      | 0.00                                      |
| नागालैंड / Nagaland                                      | 0.00                                      | 0.00                                      |
| त्रिपुरा / Tripura                                       | 0.00                                      | 0.00                                      |
| <b>उप-कुल उत्तर-पूर्वी क्षेत्र / SUB<br/>TOTAL (NER)</b> | <b>0.04</b>                               | <b>0.62</b>                               |
| <b>सम्पूर्ण भारत (कुल)/ ALL<br/>INDIA TOTAL</b>          | <b>231.36</b>                             | <b>225.12</b>                             |



## State wise Large Hydro Power Generation

| Name of State/UT  | Large Hydro Power Generation(MU) April'2024 | Large Hydro Power Generation(MU) April'2023 |
|---|---|---|
| चंडीगढ़/ Chandigarh   | 0.00  | 0.00  |
| दिल्ली / Delhi  | 0.00  | 0.00  |
| हरियाणा / Haryana   | 0.00  | 0.00  |
| हिमाचल प्रदेश / Himachal Pradesh  | 1951.25                                     | 1832.75                                     |
| जम्मू कश्मीर / Jammu & Kashmir  | 1446.01                                     | 1498.42                                     |
| लद्दाख / Ladakh   | 14.89                                       | 15.61                                       |
| पंजाब / Punjab  | 220.66                                      | 217.46                                      |
| राजस्थान / Rajasthan  | 14.02                                       | 3.13  |
| उत्तर प्रदेश / Uttar Pradesh  | 17.58                                       | 25.03                                       |
| उत्तराखंड / Uttarakhand   | 724.01                                      | 699.75                                      |
| <b>उप-कुल उत्तरी क्षेत्र / SUB TOTAL( NR)</b>                             | <b>4388.42</b>                              | <b>4292.15</b>                              |
| छत्तीसगढ़ / Chhattisgarh  | 40.89                                       | 22.33                                       |
| गुजरात / Gujarat  | 188.76                                      | 154.53                                      |
| मध्य प्रदेश / Madhya Pradesh  | 396.99                                      | 154.77                                      |
| महाराष्ट्र / Maharashtra  | 537.21                                      | 648.43                                      |
| दादर व नगर हवेली और दमन और दिउ / Dadra and Nagar Haveli and Daman and Diu | 0.00  | 0.00  |
| गोवा / Goa  | 0.00  | 0.00  |
| <b>उप-कुल पश्चिमी क्षेत्र / Sub Total (WR)</b>                            | <b>1163.85</b>                              | <b>980.06</b>                               |
| आन्ध्र प्रदेश / Andhra Pradesh  | 153.12                                      | 116.95                                      |
| तेलंगाना / Telangana  | 9.00  | 51.92                                       |
| कर्नाटक / Karnataka   | 680.49                                      | 1083.31                                     |
| केरल / Kerala   | 539.28                                      | 565.69                                      |
| तमिल नाडु / Tamil Nadu  | 171.01                                      | 245.95                                      |
| लक्षद्वीप /Lakshadweep  | 0.00  | 0.00  |
| पुडुचेरी / Puducherry   | 0.00  | 0.00  |
| <b>उप-कुल दक्षिणी क्षेत्र / SUB TOTAL( SR)</b>                            | <b>1552.90</b>                              | <b>2063.82</b>                              |
| अण्डमान एवं निकोबार/ Andaman & Nicobar                                    | 0.00  | 0.00  |
| बिहार / Bihar   | 0.00  | 0.00  |
| झारखण्ड / Jharkhand   | 8.38  | 10.67                                       |
| ओडिशा/ Odisha   | 437.98                                      | 368.73                                      |

| Name of State/UT                                     | Large Hydro Power Generation(MU) April'2024 | Large Hydro Power Generation(MU) April'2023 |
|--|---|---|
| सिक्किम / Sikkim                                     | 74.21                                       | 545.25                                      |
| पश्चिम बंगाल / West Bengal                           | 156.77                                      | 178.20                                      |
| <b>उप-कुल पूर्वी क्षेत्र / SUB TOTAL (ER)</b>        | <b>677.34</b>                               | <b>1102.85</b>                              |
| अरुणाचल प्रदेश / Arunachal Pradesh                   | 237.33                                      | 219.89                                      |
| असम / Assam  | 26.11                                       | 10.89                                       |
| मणिपुर / Manipur                                     | 17.40                                       | 7.05  |
| मेघालय / Meghalaya                                   | 37.36                                       | 40.42                                       |
| मिज़ोरम / Mizoram                                    | 4.04  | 10.43                                       |
| नागालैंड / Nagaland                                  | 4.39  | 1.41  |
| त्रिपुरा / Tripura                                   | 0.00  | 0.00  |
| <b>उप-कुल उत्तर-पूर्वी क्षेत्र / SUB TOTAL (NER)</b> | <b>326.63</b>                               | <b>290.09</b>                               |
| <b>सम्पूर्ण भारत (कुल)/ ALL INDIA TOTAL</b>          | <b>8109.14</b>                              | <b>8728.97</b>                              |



This report is published by  
Renewable Project Monitoring Division  
Central Electricity Authority, New Delhi

For any query, please contact at:  
011-26732320  
[ce-rpmcea@cea.nic.in](mailto:ce-rpmcea@cea.nic.in)/[cerpmcea@gmail.com](mailto:cerpmcea@gmail.com)