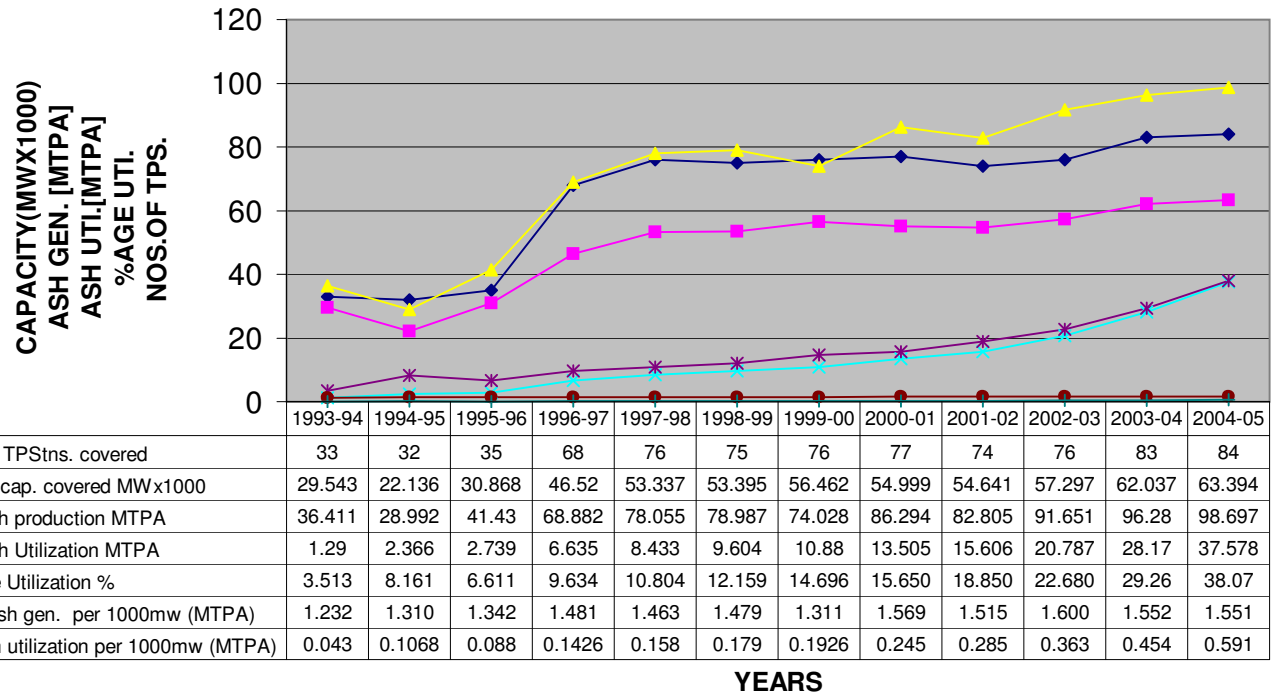


PROGRESSIVE ASH GENERATION AND UTILIZATION

S.no.	Year	No. of TPSt	Instd.cap.	Flyash	Flyash	%age	Fly Ash gen.	flyash utilization
		covered	covered	production	Utilization	Utilization	per 1000mw	per 1000mw
			MWx1000	MTPA	MTPA	%	(MTPA)	(MTPA)
1	1992-93	33	29.543	34.955	0.81	2.317	1.183	0.027
2	1993-94	33	29.543	36.411	1.29	3.513	1.232	0.043
3	1994-95	32	22.136	28.992	2.366	8.161	1.310	0.1068
4	1995-96	35	30.868	41.43	2.739	6.611	1.342	0.088
5	1996-97	68	46.52	68.882	6.635	9.634	1.481	0.1426
6	1997-98	76	53.337	78.055	8.433	10.804	1.463	0.158
7	1998-99	75	53.395	78.987	9.604	12.159	1.479	0.179
8	1999-00	76	56.462	74.028	10.88	14.696	1.311	0.1926
9	2000-01	77	54.999	86.294	13.505	15.650	1.569	0.245
10	2001-02	74	54.641	82.805	15.606	18.850	1.515	0.285
11	2002-03	76	57.297	91.651	20.787	22.680	1.600	0.363
12	2003-04	83	62.037	96.28	28.17	29.26	1.552	0.454
13	2004-05	84	63.394	98.697	37.578	38.07	1.551	0.591

**PROGRESSIVE ASH GENERATION & UTILIZATION OF COAL/ LIGNITE BASED
THERMAL POWER STATIONS**



PROGRESSIVE FLY ASH PRODUCTION AND UTILISATION

